

## Bessey Tools North America

# Tool Guide



Simply better.





Simply better.

Bessey Tools North America

# Tool Guide

## Table of Contents

### Bessey Bar Clamps Pages 1-9

#### Bar Clamps For Welding and Fabricating

**All Steel, Sliding Arm "F" Style Bar Clamps** .. Pages 1-2  
Professional Series  
Shop Floor Series  
Utility Series  
**J Series Step-Over Clamps**..... Page 3  
**Rapid Action, Steel Lever Clamps**..... Page 3

#### Bar Clamps For Construction & Woodworking

**K Body Parallel Bar Clamps and Accessories**..... Page 4  
**Malleable Cast Iron Bar Clamps**.....Pages 5-6  
TG Professional Series  
TC Jobsite/Workshop Series  
**LM Series Zinc Die Cast Bar Clamps**..... Page 6  
**Clutch Style Bar Clamps**..... Page 7  
**UniKlamps**..... Page 7  
**KlikKlamps**..... Page 8  
**Klemmy Clamps**..... Page 8  
**Staircase Clamp**.....Page 8  
**Framing Clamp**..... Page 9

#### Cross Over Bar Clamps For Wood & Metal

**MaxFlex Series Bar Clamps**..... Page 9  
**One-Handed Bar Clamps**..... Page 10  
PowerGrip Bar Clamps  
DuoKlamp



### Bessey Specialty Clamps Pages 11 - 16

#### Angle Clamps

##### ... For Welding and Fabricating

**Welder's Angle Clamp**..... Page 11  
**Welder's Multi-Angle Vise Set**..... Page 11  
**Welder's Corner Clamp**.....Page 11

##### ... For Construction & Woodworking

**WS Angle Clamps and Table Clamp**.....Page 11  
**Corner Clamp**..... Page 12  
**Miter Clamp**..... Page 12  
**Variable Angle Strap Clamp and Corner Clips**... Page 12  
**ES Irregular Angle Clamp Set**..... Page 12  
**Bessey Portable Mini-Vise**..... Page 12

#### Bessey Specialty Clamping and Hold down Systems For Welding and Fabricating

**Variable Angle Devise (VAD Pad)**..... Page 13  
**Deep Reach Pipe Clamp**..... Page 13  
**Claw Clamp and CLS-Shoe**..... Page 13  
**Jig & Fixture Clamp**..... Page 13  
**Hold Down Table Clamp**..... Page 13  
**Claw Machine Clamp**..... Page 13

#### Specialty Clamping tools For Construction and Woodworking

**Edge Clamps**..... Page 14  
**Wood Hand Screw Clamps**..... Page 14  
**Spring Clamps**..... Pages 15  
VarioClippix, Clippix, Ratcheting and Steel Spring Clamps  
**PS55 Seaming Tool**..... Page 16  
**SVH Flooring Strap Clamp**..... Page 16  
**Ratcheting Tie Down**..... Page 16  
**Pipe Clamp Fixtures**..... Page 16  
**T-Bar Sash Clamps**..... Page 16

### Bessey C Clamps Pages 17 - 18

**Drop Forged C-Clamps**  
**Malleable C-Clamps**  
**Heavy Service C-Clamps**  
**100 Series C-Clamps,**  
**Quick Release C-Clamps**  
**Double Head C-Clamps**

### Bessey Grip Pliers Page 18

#### SuperGrips

### Bessey Industrial Magnets Page 19

**Welders' Magnets**  
**Ground Clamps**  
**Handy Shop Magnets**

### Bessey Replaceable Parts & Accessories Page 20

**Replacement Pads and Caps**  
**MorPads**  
**Bessey Grip Handles**  
**2K Handle/Spindle with pads**  
**Spindles, Sliding Arms and Wedges**



### Bessey Snips, Knives & Cutters

Pages 21-23

**Bessey Compound Lever Snips**.....Page 21  
Aviation Snips  
Special Hard Cutting Offset Snips  
New Generation Offset Snips  
Short Cut and Long Cut Offset Snips  
Long-Nose, All-Propose Offset Snips  
Premium Offset Snip  
Titanium Coated Offset Snip  
**Bessey Industrial Snips and Cutters**.....Page 22  
Safety Steel Strap Cutter  
Nibbler  
Multi-Snip Multi-Purpose Cutters  
Cable Cutters  
Combinox Multi-Purpose Cutter  
MultiSnip Master  
Jeweller's Snip  
Electrician's Scissors  
Professional Shears  
**Pattern and Super Power Snips** .....Page 23  
**Bessey Folding Utility Knives**.....Page 23

### Other Industrial Products Pages 24-28

#### Specialty Clamping and Hold down Systems For Welding and Fabricating ..... Page 24

**Kant-Twist® Clamps and Weaver Grip**  
**RiteHite Hold Down System**  
**Quick-Set Hold Down System**

**Industrial & Woodworking Vises** ..... Page 25  
**Bessey Industrial Vises**  
**Yost Industrial Vises**  
**Bessey Woodworking Vises**

**Industrial Hammers**..... Pages 26 - 27

**Screw-on Fiberglass Handle and Tips**  
**Press-on Tip Hammers**  
**"Big Orange" Hammers**  
**Brass Hammers**  
**Copper Hammers**  
**Lead Hammers**  
**Dead Blow Hammers**  
**Mor-Head Industrial Hammers**

**Torque Multipliers** ..... Page 27

**Chemicals and Compounds**..... Pages 27 - 28

**Alvin Compounds**  
**Bessey Spatter Release**  
**Relton Cutting Fluids and Compounds**  
**Hylomar Gasket & Jointing Compounds**

**ReCo Induction Bearing Heaters** .....Page 28

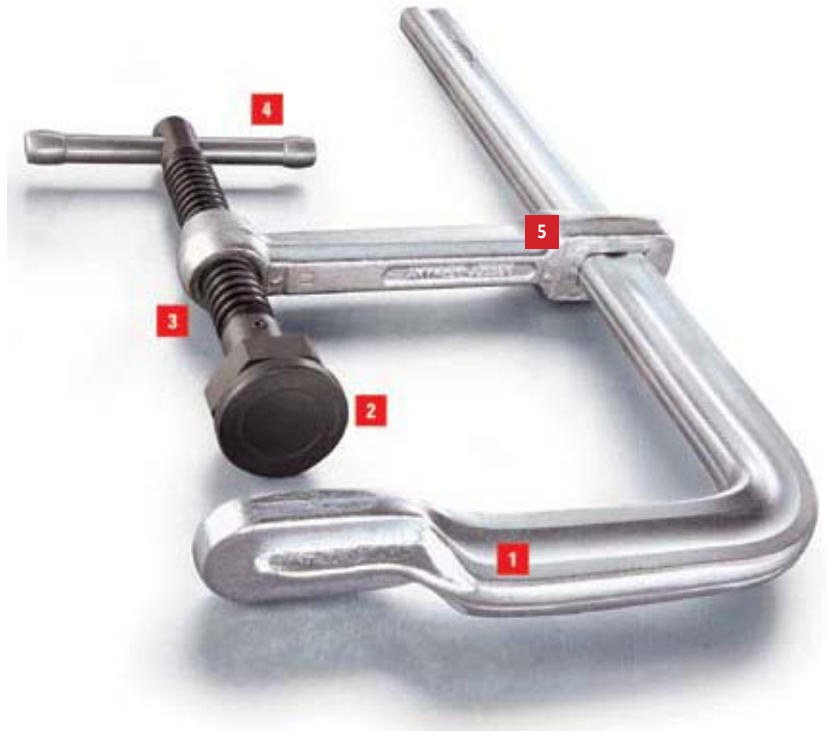
Please refer to the inside Back Cover For important information



# Bar Clamps For Welding and Fabricating

## All Steel, Sliding Arm "F" Style Bar Clamps

- 1** Rail, fixed jaws and pressure plate heat-formed in one piece from cold drawn profiled steel – optimized for high static stress loadings, tempered and electro-galvanized.
- 2** Unique Bessey Morpad tilts to 35° – easily removed for maintenance or replacement.
- 3** Heat treated, high carbon Acme threaded screw – tempered and quenched to give greater loading capacity and longer service life. Spatter resistant.
- 4** High-strength electro-galvanized sliding pin T-handle – rounded ends for comfort, size engineered to load capacity.
- 5** Tempered Steel Sliding Arm – drop forged, electro-galvanized.



### Professional Series clamps feature:

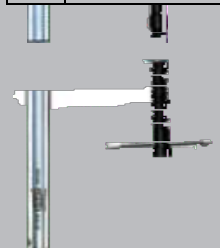
- Unique Bessey Morpad replaces a standard round ball and socket with an "engineered hemisphere and socket" for greater angle of pivot and a safer pad that won't pop out under pressure
- Replacement arms, spindles and Morpads are available for Professional Series Bessey steel clamps
- Rails and fixed top jaw are drawn, heat treated, tempered and quenched under rigid controls in Bessey's own steel plant
- 1800 Series and 2400 Series steel clamps are available with a Bessey Grip Handle - a durable, comfortable accessory that fits snugly over the standard steel sliding pin handle



### Professional Series

	Throat depTh	Clamping Capacity	Clamping Force	handle Options	
product#	inches	inches	pounds	sp	Bg
medium duty Clamps					
1800S-8	4-3/4	8	1800	•	•
1800S-12	4-3/4	12	1800	•	•
1800S-18	4-3/4	18	1800	•	•
1800S-24	4-3/4	24	1800	•	•
regular duty Clamps					
2400S-8	5-1/2	8	2660	•	•
2400S-12	5-1/2	12	2660	•	•
2400S-16	5-1/2	16	2660	•	•
2400S-20	5-1/2	20	2660	•	•
2400S-24	5-1/2	24	2660	•	•
2400S-36	5-1/2	36	2660	•	•
2400S-48	5-1/2	48	2660	•	•
2400S-60	5-1/2	60	2660	•	•
deep throat, regular duty Clamps					
DT2400S-12	8	12	1770	•	•
DT2400S-24	8	24	1770	•	•
Heavy duty Clamps					
4800S-12	7	12	4880	•	•
4800S-18	7	18	4880	•	•
4800S-24	7	24	4880	•	•
4800S-36	7	36	4880	•	•
4800S-48	7	48	4880	•	•
4800S-60	7	60	4880	•	•
extra Heavy duty Clamp					
7200S-12	8	12	7770	•	•
7200S-18	8	18	7770	•	•
7200S-36	8	36	7770	•	•
extra High pressure Clamp					
8500HPC-6	4	6	8500	•	•
	4	14	8500	•	•

Handle Options	
SP	Sliding steel pin
BG	Ergonomic Bessey Grip



### Shop Floor Series clamps feature:

- Standard swivel pressure pads built for solid dependable performance
- Replaceable arms, spindles and Morpads are available for many Shop Floor Series steel clamps
- Rails and fixed top jaw are drawn, heat treated, tempered and quenched under rigid controls in Bessey's own steel plant
- Bessey Grip Handle available on clamps indicated in specification table



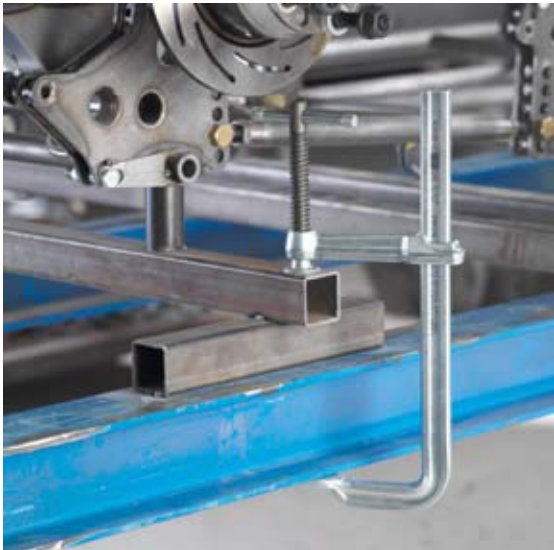
### Shop Floor Series

	Throat depTh	Clamping Capacity	Clamping Force	handle Options			
Product#	inches	inches	pounds	sp	Bg	Wh	2K
<b>light duty Clamps</b>							
MMS-4	2-1/4	4	400	•			
MMS-8	2-1/4	8	400	•			
MMS-12	2-1/4	12	400	•			
660S-8	4	8	660	•	•	•	•
660S-12	4	12	660	•	•	•	•
660S-18	4	18	660	•	•	•	•
1200S-8	4-3/4	8	1200	•	•	•	•
1200S-12	5-1/2	12	1200	•	•	•	•
1200S-18	4-3/4	18	1200	•	•	•	•
1200S-24	4-3/4	24	1200	•	•	•	•
<b>medium duty Clamps</b>							
SGL-8	4-3/4	8	1800	•	•		
SGL-12	4-3/4	12	1800	•	•		
SGL-18	4-3/4	18	1800	•	•		
SGL-24	4-3/4	24	1800	•	•		
<b>regular duty Clamps</b>							
SQ-4	4-3/4	6	1330	•	•		
SQ-8	5-1/2	8	2660	•	•		
SQ-12	5-1/2	12	2660	•	•		
SQ-16	5-1/2	16	2660	•	•		
SQ-20	5-1/2	20	2660	•	•		
SQ-24	5-1/2	24	2660	•	•		
SQ-36	5-1/2	36	2660	•	•		
SQ-48	5-1/2	48	2660	•	•		
SQ-60	5-1/2	60	2660	•	•		
<b>regular duty deep throat Clamps</b>							
DT SQ-12	8	12	1770	•	•		
<b>Heavy duty Clamps</b>							
STB-12	7	12	4880	•			
STB-18	7	18	4880	•			
STB-24	7	24	4880	•			
STB-36	7	36	4880	•			



### Utility Series clamps feature:

- Bessey quality and accuracy at an economical price, ideally suited to occasional use
- Standard swivel pressure pads
- Flat rails and fixed top jaw manufactured in Bessey's own steel plant



### Utility Series

	Throat depTh	Clamping Capacity	Clamping Force
Product#	inches	inches	pounds
<b>light duty Clamps</b>			
VC950-12	4-3/4	12	950
VC950-18	4-3/4	18	950
VC950-24	4-3/4	24	950
<b>regular duty Clamps</b>			
VC2220-12	4-3/4	12	2220
VC2220-16	4-3/4	16	2220
VC2220-20	4-3/4	20	2220
	4-3/4	24	2220



Handle Options	
SP	Sliding steel pin
BG	Ergonomic Bessey Grip
WH	Wood Handle
2K	2 part composite handle with comfort insert

## J Series Step-Over Steel Clamps

- 1 Sturdy J-shaped fixed arm produced and tempered in one piece for maximum tensile strength and sturdiness.
- 2 Replaceable heat-resistant pressure plate can be tilted up to 35° for clamping on angled or sloping surfaces.
- 3 Forged sliding arm made from tempered steel for maximum forces.
- 4 Tempered, spatter-resistant and wear-resistant spindle for long life
- 5 Sturdy sliding pin T-handle has rounded ends for comfort and hexagonal bolt for powerful, controlled clamping.



### J Series Step Over Clamps

- Bessey Grip available on 3 J Clamps: product# J-18-8, 2400J-12 and SQJ-12



### J Series Step Over Clamps

Product#	Throat depTh inches	Clamping Capacity inches	Morpad	Clamping Force pounds	rail Step-Over inches
<b>Light Duty Clamp</b>					
J18-8	4 3/4	10		880	2 1/4
<b>Regular Duty Clamp</b>					
2400J-12	5 1/2	12	•	2660	4
SQJ-12	5 1/2	12		2660	4
<b>Heavy Duty Clamps</b>					
4800J-20	7	20	•	4880	6
STBJ-20	7	20		4880	6
<b>Lever Clamp</b>					
JLC18-8	4 3/4	10		880	2 1/4
	5 1/2	12		1880	4



## Rapid-Action, Steel Lever Clamps

- 1 Ratchet mechanism ensures rapid, vibration-resistant clamping. Hardened cam at the end of the lever ensures a long service life.
- 2 Torsion-resistant, fixed bracket and pressure plate are produced and tempered in one piece for maximum tensile strength and sturdiness.
- 3 Forged sliding-arm is serrated; made from tempered, drop-forged steel for long service life.
- 4 Ergonomically shaped powder-coated clamping lever and plastic-coated release lever for comfort and power.



### Lever Clamps

Product#	Throat depTh inches	Clamping Capacity inches	Clamping Force pounds
LC-4	2-3/8	4	400
LC-8	4	8	660
LC-12	5-1/2	12	1200
LC-20	4-3/4	20	1200
	5-1/2	12	1800





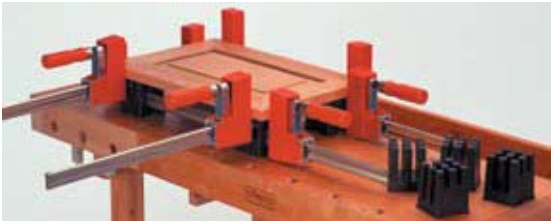
# Bar Clamps for Construction, and Woodworking

## K Body Parallel Bar Clamps

- 1 Large parallel jaw surfaces made from non-marring polyamide for accurate clamping on a range of projects.
- 2 Internal steel frame ensures accurate 90° angles; very sturdy even at maximum pressures.
- 3 BESSEY anti-slip system: Two hardened set screws molded into the sliding arm tightly grip the serrations in the rail.
- 4 Swivel fitting ensures clamp sits parallel to benchtop; removable tail-piece allows for reverse of sliding arm for use as spreader



- Accurate, powerful ... America's favorite woodworking clamp for over 25 years; **nominal clamping force up to 1,100 lbs.**
- Robust rails are profiled to minimize flexing and bending ... galvanized to prevent marring of projects



### KP Framing System (Rail & Stile Jig)

- Quick, accurate set up of raised panel doors, frames, boxes, etc



### K Body Maxis®

- Rotates around pivot to any angle from 0° to 270°
- Can be used with most bar clamps and pipe clamps



### K Body Extender

- Connects two Bessey bar clamps for extended reach
- Durable, aluminum construction for rigid accurate link



### K Body® Parallel Clamps Series

Product#	Throat depTh inches	Clamping Capacity inches	Spreading Capacity inches	Handle Options	
				Wh	2K
K3.512	3-1/2	12	9-1/4 to 15	•	•
K3.524	3-1/2	24	9-1/4 to 28-1/2	•	•
K3.531	3-1/2	31	9-1/4 to 36-1/2	•	•
K3.540	3-1/2	40	9-1/4 to 44	•	•
K3.550	3-1/2	50	9-1/4 to 53	•	•
K3.560	3-1/2	60	9-1/4 to 63	•	•
K3.582	3-1/2	82	9-1/4 to 85	•	•
	3-1/2	98	9-1/4 to 100	•	•

### K Body Tail Piece

Catalog Number	Package includes ...
	4 tail pieces to a set

### KP Framing System

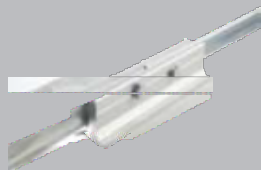
Catalog Number	Package includes ...
	4 blocks to a set

### K Body Maxis VarioPivot Clamping System

Product#	Package includes ...
	2 clamp fixtures

### K Body Extender

Product#	Package includes ...
	Extender, bolts, nuts and washers



# Tradesmen™ Malleable Cast Bar Clamps

- 1 Integrated Bessey anti-slip system - set screw that is molded into the sliding arm interlocks with the serration on the rail to prevent the clamp from slipping.
- 2 Corrugated malleable cast iron fixed jaw and sliding arm generate powerful, rigid clamping. Top jaw press fitted to rail - no mechanical fasteners to loosen. Powder coating protects against corrosion.
- 3 High-quality profiled rail from Bessey's own steel plant optimized for clamps. The profile acts as a reliable reinforcement against torsional forces, while the serration on six faces additionally prevents the clamp from slipping.
- 4 Smooth-running spindle with Acme thread – more clamping with less cranking. Work hardened for strength.



## TG Professional Series Malleable Cast Clamps

- Ultimate in stability for professional woodworking and construction sites ... invaluable for high pressure applications and wide openings
- Pressure plates can be changed without tools
- Choice of traditional wood handle or new ergonomic 2K handle.
- Malleable cast jaws feature corrugated design for strength and long tool life



## TG Professional Series Malleable Cast Clamps

Product#	Throat depTh Inches	Clamping Capacity Inches	Clamping Force Pounds	Handle Options	
				Wh	2K
<b>light duty malleable Cast Bar Clamps</b>					
TGJ2.506	2-1/2	6	600	•	•
TGJ2.512	2-1/2	12	600	•	•
TGJ2.518	2-1/2	18	600	•	•
TGJ2.524	2-1/2	24	600	•	•
TGJ2.530	2-1/2	30	600	•	•
TGJ2.536	2-1/2	36	600	•	•
TG4.008	4	8	880	•	•
TG4.012	4	12	880	•	•
TG4.016	4	16	880	•	•
TG4.024	4	24	880	•	•
<b>medium duty malleable Cast Bar Clamps</b>					
TG4.512	4-1/2	12	1000	•	•
TG4.518	4-1/2	18	1000	•	•
TG4.524	4-1/2	24	1000	•	•
TG4.530	4-1/2	30	1000	•	•
TG4.540	4-1/2	40	1000	•	•
TG5.512	5-1/2	12	1320	•	•
TG5.518	5-1/2	18	1320	•	•
TG5.524	5-1/2	24	1320	•	•
TG5.530	5-1/2	30	1320	•	•
TG5.540	5-1/2	40	1320	•	•
TG7.016	7	16	1320	•	•
TG7.024	7	24	1320	•	•
TG7.030	7	30	1320	•	•
TG7.040	7	40	1320	•	•
TG7.048	7	48	1320	•	•
<b>Heavy duty malleable Cast Bar Clamps</b>					
TGK4.516	4-1/2	16	1540	•	•
TGK4.524	4-1/2	24	1540	•	•
TGK4.540	4-1/2	40	1540	•	•
TGK4.550	4-1/2	50	1540	•	•
TGK4.579	4-1/2	79	1540	•	•
<b>deep reach malleable Cast Bar Clamps (with pads)</b>					
CDS24-10	10	24	1550		
CDS24-12	12	24	1550		
CDS24-20	20	24	990		



### Handle Options

WH	Wood Handle
2K	2 part composite handle with comfort insert

## TC Jobsite Series Malleable Cast Bar Clamps

- Flat rails are an economical alternative... Bessey quality at an appealing price for lighter duty applications and hobby projects
- Available with wood handle only



### Clamp Kits

- We have pre-packaged a selection of the most popular Bessey clamps for craftsmen
- K Body kits
  - KBK 1224—ideal for picture frames and drawer boxes
  - KBK 2440—ideal for cabinet panel doors
  - KBK 2450—ideal for large cabinet panel doors
- BTB30 and BTB30A a versatile offering suitable for most general workshop projects
- TWH-2 is a pair of bar clamps affectionately called the “workhorses” are an indispensable duo for day in and day out job site and workshop projects

## LM Series Zinc Die Cast Bar Clamps

- Zinc die cast jaws are light weight but still hold up to 550 pounds of clamping force
- Serrated rail for slip resistant grip
- Large Acme thread for quick, smooth operation
- Non-marring plastic caps on pressure pad



## TC Jobsite Series Malleable Cast Bar Clamps

	Throat depTh	Clamping Capacity	Clamping Force
product#	inches	inches	pounds
<b>light duty malleable Cast Bar Clamps</b>			
TC4.008	4	8	800
TC4.012	4	12	800
TC4.024	4	24	800
<b>medium duty malleable Cast Bar Clamps</b>			
TC4.512	4.5	12	950
TC4.518	4.5	18	950
TC4.524	4.5	24	950
TC5.512	5.5	12	1200
TC5.524	5.5	24	1200
TC7.016	7	16	1200
TC7.024	7	24	1200
<b>Heavy duty malleable Cast Bar Clamps</b>			
TCK4.516	4.5	16	1400
TCK4.524	4.5	24	1400

### Clamp Kits

product#	No. of Clamps	Kit includes
<b>k Body Kits</b> (packaged with set of KP Blocks)		
KBK 1224	4	K3.512 (2) and K3.524 (2)
KBK 2440	4	K3.524 (2) and K3.540 (2)
KBK 2450	4	K3.524 (2) and K3.550 (2)
<b>tradesmen Bar Clamp Kits</b>		
BGP	10	Two XM5 (2" spring clamps), two LM2.004 (4" light duty bar clamps), two TGJ2.506 and two TG4.008 (6" and 8" medium duty Tradesmen bar clamps) and two PC34 (3/4" pipe clamps)
BTB30	30	Includes four 6", six 12", four 18", eight 24", four 30", and four 36" TG Series Tradesmen Bar clamps
BTB30A	30	Same clamp selection as the BTB30 kit with a sturdy, convenient and compact A-frame bar clamp storage rack on industrial casters
TWH-2	2	A versatile pair of Tradesmen bar clamps ... one TG4.008, 8-inch bar clamp (4" throat depth) and one TG5.512, 12-inch bar clamp (5 1/2" throat depth)

## LM Light Duty Series Zinc Die Cast Bar Clamps

	Throat depTh	Clamping Capacity	Clamping Force
product#	inches	inches	pounds
LM2.004	2	4	330
LM2.006	2	6	330
LM2.008	2	8	330
LM2.012	2	12	330
LM3.006	3	6	330
LM3.008	3	8	330
LM3.012	3	12	330
LM3.018	3	18	330
LM3.024	3	24	330
LM3.030	3	30	330
LM3.036	3	36	330
LM4.008	4	8	440
LM4.012	4	12	440
LM4.016	4	16	440
LM4.024	4	24	440
LM4.032	4	32	440
LM5.012	5	12	550
LM5.018	5	18	550
LM5.024	5	24	550
	5	30	550





## Clutch Style Bar Clamps

- Powder coated, ductile cast iron jaws
- Nickel plated, drawn serrated rail
- 2 piece slip clutch plates
- Protective non-marring pads on top and bottom jaws
- Comfortable wood grip



## Double-Head, Clutch Style Bar Clamps

- Cast jaws
- Non-marring pads
- Versatile and ideal for light duty clamping



## UniKlamps

- A universal clamp/spreader for bench top projects with a lighter frame and rail
- Note: the UniKlamp does not offer the precision or robust components for the accuracy and precision of the K Body
- Exerts even clamping force over 11 sq. in. of non-marring jaw surface.



## Clutch Style Bar Clamps

Product#	Throat depth inches	Clamping Capacity inches	Load limit pounds
GSCC2.506	2-1/2	6	600
GSCC2.512	2-1/2	12	600
GSCC2.518	2-1/2	18	600
GSCC2.524	2-1/2	24	600
GSCC2.530	2-1/2	30	600
GSCC2.536	2-1/2	36	600
GSCC3.512	3-1/2	12	1000
GSCC3.518	3-1/2	18	1000
GSCC3.524	3-1/2	24	1000
GSCC5.012	5	12	1200
GSCC5.018	5	18	1200
	5	24	1200



## Double-Head, Clutch Style Bar Clamps

Product#	Throat depth inches	Clamping Capacity inches	Load limit pounds
DHBC-12	3-1/2	12	400
DHBC-24	3-1/2	24	400
	3-1/2	36	400



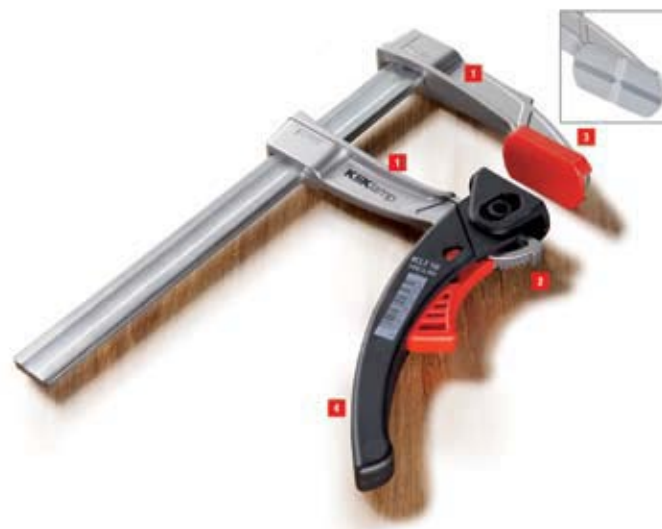
## UniKlamps

Product#	Throat depth inches	Clamping Capacity inches	Clamping Force pounds
UK3.006	3-1/8	6	330
UK3.012	3-1/8	12	330
	3-1/8	18	330



## KliKlamps

- 1 Magnesium jaws are extremely light and strong.
- 2 Ratchet mechanism is vibration-resistant – ideal for use with power tools. Ratchet action controls clamping and release quickly and easily.
- 3 Fixed arm with V-grooves holds any shaped work piece firmly.
- 4 Durable, fibreglass-reinforced polyamide clamping arm ergonomically designed for comfort and power.



## Klemmy Clamps

- Cam-action is ideal for light-touch clamping for delicate tasks like antique restoration, veneering and making or repairing musical instruments
- Upper and lower arms and lever made from high-quality hardwood
- Cork protective pads for gentle clamping

## Staircase Clamp

The Bessey Staircase clamp offers a safe, productive alternative for staircase manufacturers:

- It reduces exposure to the risk of injury, fatigue and pain caused by heavy hand-tightening of hundreds of clamps
- It improves productivity over hand-tightening manual clamps by using air-tools or ratchets (15 ft/lb of torque) in high volume production shops to tighten clamps



### KliKlamps

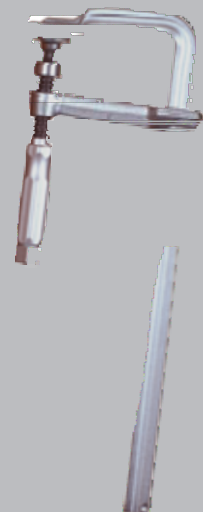
product#	Throat depTh inches	Clamping Capacity inches	Clamping Force pounds
KL13.004	3	4	260
KL13.008	3	8	260
	3	12	260

### Klemmy Clamps

product#	Throat depTh inches	Clamping Capacity inches
KLW4.008	4	8
KLW4.012	4	12
KLW4.016	4	16
KLW4.024	4	24
KLW4.030	4	30
	4	39

### Staircase Clamp

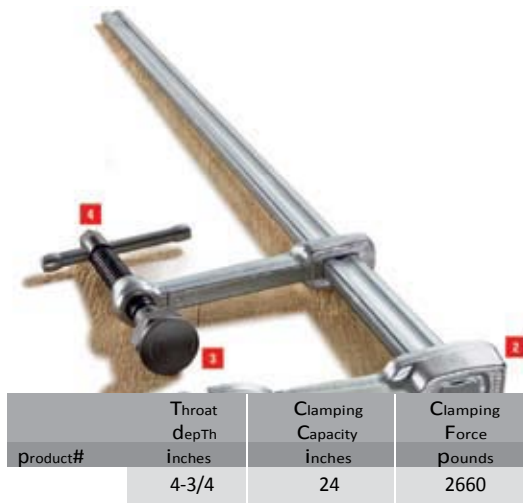
product#	Throat depTh inches	Clamping Capacity inches	Clamping Force pounds
TSC4.516	4-1/2	16	1880





## Framing Clamp

- 1 Save time and labor on the job: simply drive the spear-tip of the clamp into the rafter and tighten the spindle.
- 2 Broad impact surface of striking anvil makes it easy to drive the clamp while working on rafters and joists.
- 3 Morpad pressure plate tilts up to 35° to accommodate standard framing angles.
- 4 Sturdy hex-bolt accommodates torque wrench to improve productivity.



### Framing Clamp

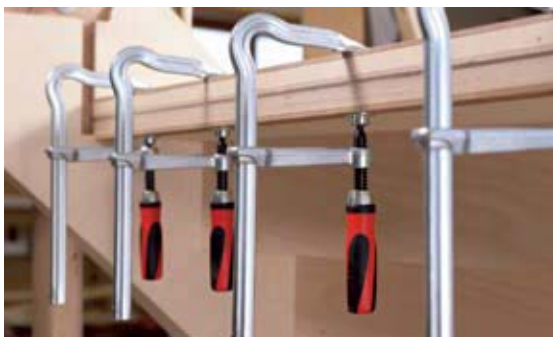
TF4.7524



## Cross Over Bar Clamps for Wood and Metal

### MaxFlex Series Bar Clamps

- 1 The patented OMEGA bend dampens the impact of external vibrations while clamping.
- 2 Fixed arm and pressure plate produced and tempered from one piece of quality Bessey steel.
- 3 The arc of the Omega curve enables the rail to hug tightly to the surface work piece ... allows clamping right into the corner of the clamp.
- 4 Choice of traditional sliding pin handle or the new ergonomic 2K handle.



### MaxFlex Series Bar Clamp

product#	Throat depTh inches	Clamping Capacity inches	Clamping Force pounds	handle Options		
				sp	Bg	2K
RSC-8	4	8	770	•	•	•
RSC-12	5-1/2	12	1100	•	•	•
RSC-18	4-3/4	18	1100	•	•	•
	4-3/4	24	1100	•	•	•

Handle Options	
SP	Sliding steel pin
BG	Ergonomic Bessey Grip
2K	2 part composite handle with comfort insert



# PowerGrip One-Handed Bar Clamps

- 1 Ergonomic handle with pump lever configured parallel to the rail for balanced, safe handling.
- 2 Quick release button for rapid action of sliding arm.
- 3 Removable plastic caps provide a non-marring, soft touch for use with wood and finished metal surfaces.
- 4 Fixed arm and pressure plate drawn and tempered from a single piece of high quality Bessey steel.



North American PowerGrip Clamps feature a red body housing. The black housing shown in photo is the European version and not available in North America. The mechanism is identical in both... the only variation is color.

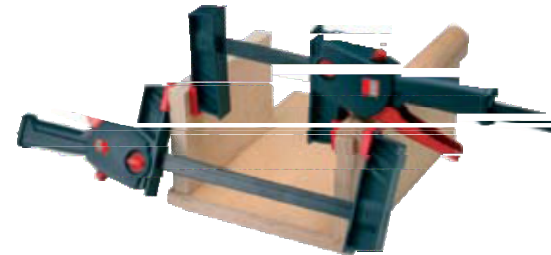
PowerGrip One-Handed Bar Clamp

Product#	Throat depTh	Clamping Capacity	Clamping Force	handle Options	
	inches	inches	pounds	Wh	alum
PG4.012	4	12	1000	•	
PG4.024	4	24	1000	•	
PG-12	4	12	1000		•
	4	24	1000		•



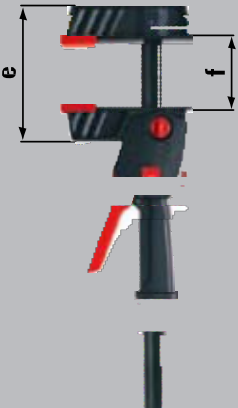
# DuoKlamp One-Handed Bar Clamps

- 1 The action of the DuoKlamp reverses from clamping to spreading with the simple twist of the mini-dial. This unique feature makes it quick and easy to toggle between clamping and spreading without taking the tool apart like other less convenient clamps.
- 2 Ergonomic handle with pump lever configured parallel to the rail for balanced, safe handling.
- 3 Quick press of a button allows the clamping arm to quickly slide up or down to clamping position.
- 4 Large impact and fracture-resistant reinforced polyamide jaws stay parallel to each other. Unique centered jaw configuration facilitates clamping on all four edges as well as the large surface of the jaw.



One-Handed DuoKlamp

pProduct#	Throat depTh	Clamping Capacity (f)	Spreading Capacity (e)	Clamping Force
	Inches	Inches	Inches	pounds
DUO16-6	2-1/2	6	2-1/2 to 8-1/2	180
DUO30-6	2-1/2	12	2-1/2 to 14	180
DUO16-8	3-1/4	6	3 to 9	260
DUO30-8	3-1/4	12	3 to 14-1/2	260
DUO45-8	3-1/4	18	3 to 18-1/2	260
	3-1/4	24	3 to 25-1/2	260





# Specialty Clamps For Welding and Fabricating

## Angle Clamps for Welding and Fabricating

### Welder's Angle Clamp

- Automatic adjustment to work pieces of different thicknesses
- Sturdy jaws and base made from high grade cast iron
- Copper-plated spindles resist spatter
- Accurate 90° angle



### Welder's Multi-Angle Vise Set

- Clamps components of different thicknesses from 5° to 180°
- Cast iron body and base plate; copper-plated spindles



### Welder's Corner Clamp

- Open construction for easy access to work
- Clamps different thicknesses of metal at 90°

## Angle Clamps for Construction and Woodworking

### WS Angle Clamps

- Holds and aligns material at a 90° angle. Accurate, ideal for cabinetry
- Adjusts automatically to wood thickness
- Features: Galvanized spindle; Acme thread; die cast jaws - plastic-coated to protect work; designed for clearance for dowels, screws or staples while gluing.

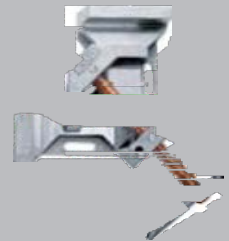
### Table Clamps

- Holds Bessey table top clamps to work surface



### Bessey Angle Clamps for Welding and Fabricating

Product#	Jaw height inches	Maximum Material Size For Miter Joints inches
<b>Welder's angle Clamps</b>		
WSM9	1-3/8	3-1/2
WSM12	2-3/8	4-3/4



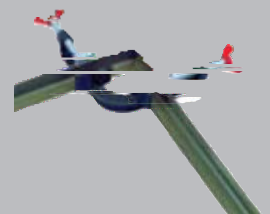
### Welder's Multi-Angle Vise Set

Product#	Clamping Capacity inches	Jaw height inches	range of angle degrees
	4	1-3/8	50 to 180



### Welder's Corner Clamp

Product#	Maximum Passage For T Joints
H94/1	2 inches each side
	4 inches each side



### Bessey Angle Clamps for Construction and Woodworking

Product#	Maximum Clamping Capacity	T-Joint Clearance inches
<b>WS angle Clamps</b>		
WS-3	total both pieces - max. 4" thick	1-1/8
WS-6	total both pieces - max. 8" thick	2-7/16
<b>table Clamps</b>		
	Fits WS-3, WS-6	



## WS-1 Corner Clamp

- Economical fixed 90° angle for miter or butt joints
- Mounting holes to fix to work surface

## GS-11 Miter Clamp

- Features designed for professional cabinetmaker
- Swivel clamping jaws draw joints together as thumbscrew is tightened
- Rigid steel base - non-marring polyamid clamp body

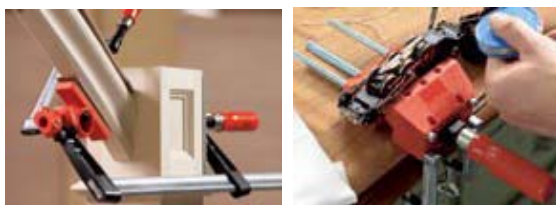
## Variable Angle Strap Clamp

- 1 Strap draws simultaneously from both sides ensuring pressure is applied equally on all angled corners without distortion.
- 2 Integrated rewind mechanism operates by cranking handle – eliminates tangling or damage to band.
- 3 Vario clip corners with twin-tilting pressure pads auto-adjust from 60° to 180° for easy assembly of any multi-angle project.
- 4 Clamping strap is made from seat belt strength woven polyester for high resistance to tearing. The steel wire loop closure opens quickly and simply to adjust or release glue-up.



## ES Irregular Angle Clamp Sets

- Used With Bessey TGK Bar Clamps, this ball & socket system applies direct force on angles from 15° to 180°
- Caps are glue resistant – anti-slip inlaid pads won't mar work



## Bessey Portable Mini-Vise

- Non-marring glue resistant jaws
- Removable, galvanized bars accommodate irregular shapes
- Can be clamped to work surface with TK-6 table clamps

### Ws-1 Corner Clamp

Product#	Clamping Capacity inches	range of Angle degrees
	upto 3 inches	90°



### gs-11 Miter Clamp

Product#	Clamping Capacity inches	range of Angle degrees
	4-1/8"	45° to 120°



### Variable Angle Strap Clamp

Product#	Clamping Capacity inches	range of Angle degrees
VAS-23	upto 23 feet	60° to 180°
Vario Corner Clips (6 per package)		60° to 180°



### es Irregular Angle Clamp Set

Product#	Set Contains ...
ES Set	Includes 2 blocks and 2 caps



### Bessey portable Mini-Vise Clamp

Product#	Jaw Width inches	Jaw Opening inches
S-10	3-5/8	4
S-15	3-5/8	6
Vise Clamp to fix to work surface		





# Specialty Clamps and Hold Downs For Welding and Fabricating

## Variable Angle Devise ( VAD Pad)

- Floating pads tilt 60° inward or outward - ideal for clamping or aligning round, oval and angular pieces
- Easy to install and remove; swivels 360°
- Fits up to 2400 series clamps

## Deep Reach Pipe Clamp

- Holds pipe in alignment for welding
- Jaws & clamp arms made from malleable cast iron



## Claw Clamp

- Spindle mechanism can be positioned outside working area for use in confined spaces
- Can be use as a spreader (needs optional CLS shoe).
- High-grade cast pressure plate... swivels up to 30°



## Jig & Fixture Clamp

- Clamp on any perforated flat surface for 360° rotation
- Pressure plate swivels up to 35°

## Hold Down Table Clamp

- Vibration proof, ratchet action - fast and secure
- Ideal for machines equipped with "T" slots
- Quick release button to instantly release pressure



## Claw Machine Clamp

- Cantilever jaw for clamping in tight space with screw positioned outside of work area
- Full rotation through 360° radius for easy set-up

### Variable angle devise (set of two)

product#	Tilt : in/Out	Swivel
	up to 60°	360°



### deep reach pipe Clamp

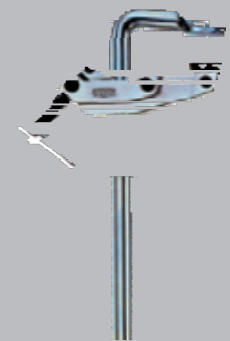
product#	Throat depTh inches	pipe diameter inches
	10	4 to 16



### Claw Clamp

product#	Throat depTh inches	Clamping Capacity inches	Clamping Force pounds
CL-24	4	24	1775

CLS-Shoe



### Jig & Fixture Clamp

product#	Throat depTh inches	Clamping Capacity inches	Clamping Force pounds
	5-1/2	8	2660



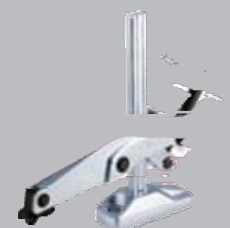
### Hold down table Clamp

product#	Throat depTh inches	Clamping Capacity inches	Clamping Force pounds
	4-3/4	9-1/2	2220



### Claw machine Clamp

product#	Throat depTh inches	Clamping Capacity inches	Clamping Force pounds
	4-3/4	8	1450



# Specialty Clamping Tools For Construction and Woodworking

## Edge Clamps

### EKT Professional One-Hand Edge Clamp

- 1 Unique twin spindle. Outer spindle acts on the clamping jaws – inner spindle applies pressure to the front edge. Impact resistant plastic handle.
- 2 Two large non-slip, opposing, gentle jaws for positive grip.
- 3 Large swivel pressure plate applies pressure on demand. Removable protective cap.
- 4 Lightweight, corrosion-resistant aluminum housing designed for high static stress load.



### Regular Duty Edge Clamp Accessories

- Choice of single or double spindle design
- For use with bar clamps with rails up to 1/2" thick

## Wood Handscrew Clamps

- Cold-drawn, carbon-steel spindles and swivel nuts
- Acme thread for quick clamping
- Large handles for comfort and torque
- Oiled maple jaws

### Edge Clamps

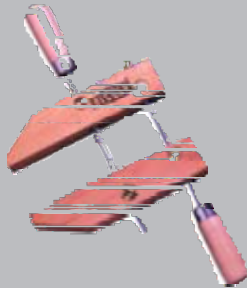
Product#	Throat depTh inches	Clamping Capacity inches	Clamping Force Pounds
<b>Professional One Hand Edge Clamp</b>			
EKT-55	3	2-1/8	500
<b>Heavy duty tHree Way Edge Clamp</b>			
TWC-3HD	3-1/4	3	500
<b>light duty tHree Way Edge Clamp</b>			
	2-1/2	2-1/2	300



Product#	Number of Spindles
<b>Regular duty Edge Clamp Accessories</b>	
5-1	1
	2

### Wood Handscrew Clamps

Jaw length Product#	Clamping Capacity inches	Throat depTh inches	Spindle diameter inches	inches
HS-4	4	2-1/4	2	1/4
HS-5	5	2-3/4	2-1/2	1/4
HS-6	6	3	3	5/16
HS-8	8	5	4	7/16
HS-10	10	7	5	7/16
HS-12	12	9-1/4	6	7/16
	14	10-1/4	7	7/16





# Spring Clamps

## VarioClippix XV Spring Clamp

- 1 Rapid-action, polyamide, sliding top jaw infinitely adjusts to fit project ... the clamping capacity of a 4" spring clamp with the comfort of a 2" clamp.
- 2 Ergonomic 2-component handle - designed for comfort and firm grip.
- 3 Soft-touch pads for a non-marring firm grip.



## VarioClippix XV Spring Clamp

- Revolutionary design ... feels like a 2" spring clamp and but has a clamping capacity like a clamp twice its size
- Polyamide material is lightweight, strong and corrosion resistant

## Clippix XC Spring Clamp

- Made from durable, lightweight polyamide
- The comfort and grip of the VarioClippix Series in a traditional spring clamp configuration

## Economy Spring Clamp

- Light duty spring clamps for home or shop
- 4 popular sizes, conveniently packaged in a mesh bag



## Ratchet Action Spring Clamp

- Heavy duty resin construction with pivoting jaws
- Ratcheting mechanism - quick action, quick release



## Steel Spring Clamps

- Heavy-duty springs for firm grip, nickel plating resists corrosion
- Vinyl tips and handles prevent marring



## Plastic Spring Clamps

Product#	Throat Depth Inches	Clamping Capacity Inches
<b>VarioClippix</b>		
XV3-50	1.5	2-1/8
XV5-100	2	4
<b>Clippix</b>		
XC2	1-1/8	1
XC5	1-15/16	2
XC5-2	1-1/2	2
	2-3/4	3



## Economy Plastic Spring Clamps

XC-14PC	14 Piece kit includes ...
	- 3" plastic spring clamps (2)
	- 2" plastic spring clamps (2)
	- 1" plastic spring clamps (4)
	- 3/4" plastic spring clamps (6)



Product#	Throat Depth Inches	Clamping Capacity Inches
<b>deep reach Ratcheting Spring Clamps (Square Jaw/pad)</b>		
XCRU3	2	2
XCRU5	4	4
<b>deep reach Ratcheting Spring Clamp Kit (round Jaw/pad)</b>		
Kit includes four 2" ratcheting plastic spring clamps		



## Steel Spring Clamps

Product#	Throat Depth Inches	Clamping Capacity Inches	Clamping Force Pounds
XM3	1	1-1/4	33
XM5	2	2-1/4	49
XM7	3	3-5/16	66
	4	5	63



## PS55 Seaming Tool

- Twin vacuum cups secure clamp to any non-porous, solid surface material such as granite, marble or glass
- Leveling toggles ensure smooth surface joint, reduces grinding, sanding and finishing
- Precision, professional tool with work hardened spindle, aluminum frame and cold drawn rod guides



## Flooring Strap Clamp

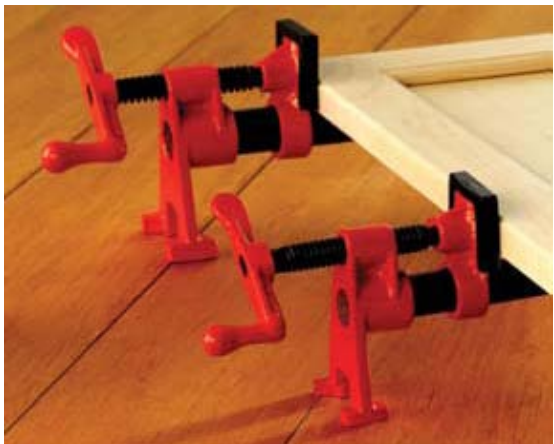
- Quick, accurate solution for installing parquet, plank and laminated flooring—13 ft. strap

### Ratchet Tie Down

- For clamping awkward and irregular shape projects

## “H” Style Pipe Clamp Fixture

- "H" shaped foot assembly stabilizes the clamp in two dimensions giving dual-axis stability
- Extra high base provides industry leading clearance from the work surface
- Cast jaws for durability, smooth action spindle



## T-Bar Sash Clamps

- Fast, easy adjusting moveable jaw—simply slide to work piece, place lock pin in perforated rail
- Rugged construction—cast iron jaw, steel rail



### PS55 Seaming Tool

	Clamping Capacity	Cup diameter	Clamping Force
product#	inches	inches	pounds
PS55	2-1/8	5	48-1/2

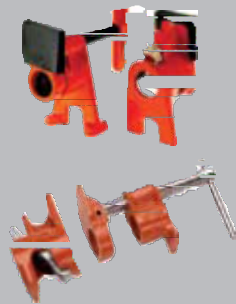


	Strap length	Clamp plate Width	Clamping Force
product#	inches	inches	pounds
<b>Flooring Strap Clamp</b>			
SVH400XL	300	4-3/4	220
<b>Ratchet tie down</b>			
	180	1-3/8	up to 400



### Pipe Clamp Fixtures

product#	Black Pipe diameter
<b>“H” Style Pipe Clamp Fixtures</b>	
BPC-H34	3/4 inch
BPC-H12	1/2 inch
<b>Standard Pipe Clamp Fixtures</b>	
PC34	3/4 inch
PC12	1/2 inch
	3/4 inch deep reach



### t-Bar Sash Clamps

	Throat depth	Clamping Capacity	Clamping Force
product#	inches	inches	pounds
BT-36	2	39	3990
BT-96	2	98	3330
	2	120	2660



# C-Clamps

## Drop Forged C Clamps

- Drop-forged, heat-treated steel frame and swivel pad
- **Choice of spindle coating:**
  - black oxide to resist corrosion
  - copper to resist weld spatter
- **Choice of finish:**
  - standard black finish
  - high visibility (HiVis) finish conforming to OSHA safety color standard #1910.144

## Malleable Cast C Clamps

- General purpose C Clamp ideal for DIY projects
- Wide range of throat depths, openings and clamping force ratings
- Galvanized finish for sizes CM10–CM30
- Black powder coated for sizes CM40–CM80
- Two deep reach sizes: 2" x 3-1/2" and 4" x 4-1/2"

## Heavy Service C Clamps

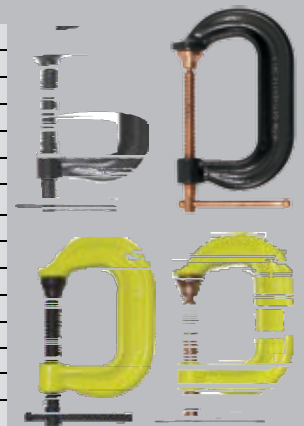
- Drop forged, heat-treated frame for strength
- Clamping force up to 40,000 pounds
- Hex head for maximum torque
- Available by special order only

## 100 Series C Clamps

- Drop forged, heat-treated frames designed for heavy industrial and construction applications
- Hex head and sliding-pin T-handle for maximum torque and flexibility
- Available by special order only

### C-Clamps

Black Oxide Spindle Product#	Copper Coated Spindle Product#	Throat depth Inches	Clamping Capacity Inches	Load Test Pounds
<b>Drop Forged C-Clamps</b>				
CDF402	CDF402C	2	2	3500
CDF403	CDF403C	2-3/8	3	3500
CDF404	CDF404C	2-3/4	4	6200
CDF406	CDF406C	3-5/8	6	6900
CDF408	CDF408C	4-1/2	8	6900
CDF410	CDF410C	5-3/8	10	8000
CDF412	CDF412C	5-3/4	12	9300
<b>HiVis Drop Forged C-Clamps</b>				
CDF402HV	CDF402HVC	2	2	3500
CDF403HV	CDF403HVC	2-3/8	3	3500
CDF404HV	CDF404HVC	2-3/4	4	6200
CDF406HV	CDF406HVC	3-5/8	6	6900
CDF408HV	CDF408HVC	4-1/2	8	6900
CDF410HV	CDF410HVC	5-3/8	10	8000
	CDF412HVC	5-3/4	12	9300



Product#	Throat depth Inches	Clamping Capacity Inches	Load Test Pounds
<b>Malleable C-Clamps</b>			
CM23DR	3-1/2	2	400
CM34DR	4-1/2	3	500
CM10	1	1	400
CM13	3	1	400
CM15	1-1/2	1-1/2	400
CM20	1-1/2	2	400
CM22	1-3/8	2-1/2	600
CM25	2-1/2	2-1/2	600
CM30	1-3/4	3	800
CM40	3-1/4	4	1200
CM50	3-1/4	5	1200
CM60	3-1/2	6	1200
	4	8	1200



<b>Heavy Service C-Clamps</b>			
	1-1/16	3/4	2,800
B-HS1	1-3/32	1-3/8	5,600
B-HS1.5	1-7/16	1-13/16	8,750
B-HS2	1-7/8	2-3/8	12,500
B-HS3	2-1/2	3-5/16	16,250
B-HS4	2-7/8	4-5/8	20,000
B-HS5	3-1/16	5-3/8	23,800
B-HS6	3-1/2	6-5/8	27,500
B-HS8	4-1/8	8-1/4	31,250
B-HS10	4	10-3/8	35,000
	4	12-1/2	40,000



<b>100 Series C-Clamps Square Head/Sliding T-handle (Special Order)</b>			
	1-1/22	7,500	
B-103	2	3	8,750
B-104	2-1/4	4	10,000
B-106	2-1/2	2-6	11,250
B-108	2-1/4	4-8	12,500
B-110	2-7/8	6-10	13,750
B-112	2-15/16	8-12	15,000





## Quick Release C Clamps

- Malleable cast-iron frame, powder coated to resist corrosion  
- ideal for DIY projects
- Red quick-release button for rapid opening and closing
- Chrome plated spindle and swivel pad



## Double-Head C Clamps

- Provides twin top pressure points in light duty clamping applications—ideal for hobbies, crafts/light trades

## Grip Pliers

Bessey Grip Pliers combine the adjustable jaw of a sliding-arm clamps with the functionality of the grip pliers design. Quick to engage with the advantage of parallel clamping jaws. A versatile, useful addition to home and shop.

## SuperGrips™

- Infinitely adjustable jaw
- Cold drawn, profiled steel rail
- Adjustable screw/lock nut (on lower lever): adjusts jaw angle (up to 7°) for clamping tapered parts
- Adjustable screw/lock nut (top handle): adjusts clamping force
- SG-GC Welders' Ground rated for 400 Amps



### MultiGrip

- Jaw open in two stages for "pre-clamping" effect to enable adjustment before applying maximum pressure
- Integrated locking thumb-screw to pre-set jaw opening for repetitive work

### SuperGrip Pipe Clamps

- Cradle jaw aligns and holds pipe firmly in place

### Deep Reach

- Clamps over angle iron, channel iron and other obstacles

### SuperGrip Welders' Fork

- Forked jaw clamps two work piece together over an obstruction

### VarioGrip Welders' Fork

- Two independently-adjustable sliding heads can be set at different heights AND depths

## C-Clamps

product#	Throat depth inches	Clamping Capacity inches	load Test pounds
<b>Quick Release C-Clamps</b>			
QRCC3	1-3/4	3-1/2	1200
QRCC4	2-1/4	4-3/8	1200
	3-7/8	6-5/8	1200

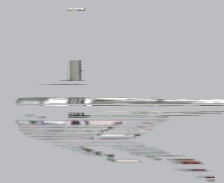
### Double Headed C-Clamps

	2-1/4	4	1200
	2-7/8	6	1200

## Grip Pliers

description	depth	Throat Opening inches	Jaw Force inches	Clamping Force pounds
<b>SuperGrips</b>				
SG-4WP	with pads	2-1/2	4	440
SG-8WP	with pads	2-1/2	8	440
	w/hole for ground wire	2-1/2	4	310

product#	Throat depth inches	Jaw Opening inches	Clamping Force pounds
<b>MultiGrips</b>			
SG2-MGR	2-3/4	2-1/2	222
<b>SuperGrip Pipe Clamp</b>			
SG24-PC	2-3/4	4-1/2	310
<b>Deep Reach</b>			
SG5-DR	3	4-1/2	310
<b>SuperGrip Welder's Fork</b>			
SG24-WF	3	4	310
<b>VarioGrip Welder's Fork</b>			
SG24-VWF	3	4	310



# Industrial Magnets

## Welder's Magnets



- Quality magnets for fast, simple set-ups
- Single magnets hold work at set angles
- Double magnets hold work at any angle
- Larger models have "T" handles to release magnets

## Specialty Magnets



**Belt MagClip**– Handy magnetic disc with belt clip for holding screws, nuts, small parts while working

**MagPick-Up** – Magnetic disc on 35" tubular shaft for picking up small metal parts – also useful during clean-up

**MagStik** – 5-1/2" "pen-sized" pocket magnet extends to 26" to pick-up hard to reach small metal objects

**MagBend-it** – similar to MagStik with magnet on a flexible shaft

**MagSweep** – Rolling shop-floor magnet on wheels, 24" swath

**MagWand** – can pick up to 12 lbs. of swarf in a pass for a cleaner, safer welding and machine shops. Rolls easily over industrial work surfaces – "dumps" waste by simply pulling sliding magnetic insert. Comes in 16", 22", 36" and 48" lengths.

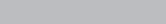
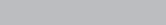
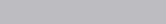
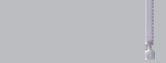
## Welder's Magnets

Product#	pull pounds	dimensions inches	pre-set angles degrees
<b>Welders' Magnetic Squares</b>			
WMS-1	66	3-3/8x3-3/8x5/8	90/45
WMS-3	55	3-3/8x3-3/8x5/8	90/45
WMS-5	112	3-3/4x4-3/8x3/4	90/45
<b>double Welders' Magnetic Square</b>			
WMS-4	110	6-1/8x3-3/8x5/8	0to180
<b>Multi-angle Magnetic Square</b>			
WMS-6	52	4x2-1/2x9/16	30/45/60/75/90
<b>ArrowHead Magnetic Square</b>			
WMS-7	41	4-3/4x3-1/4x9/16	90/45
<b>Chunky Magnetic Square</b>			
CMS-1	100	3-3/4x4-3/8x1-5/8	90/45
<b>"Big Daddy" Magnetic Square</b>			
BDMS-1	100	8x8x1-5/8	90/45
<b>Welders' Magnetic Squares - "on/off" Switch</b>			
WMS-8	75	3-3/8x4-3/8-1-1/4	90/45

Product#	pull pounds	dimensions inches	amps
<b>Welders' Magnetic Ground Clamps</b>			
MGC-1	55	3-1/2x2	250
	55	3-1/2x2	800

## HandyShop Magnets

Product#	description
<b>Belt MagClip</b>	
MBC	Magnetic disc with belt clip
<b>MagPick-Up</b>	
MPU-1	Magnetic disc on 35" tubular shaft
<b>MagStik</b>	
MS-1	Magnet on a 26" telescoping shaft, pocket clip
<b>MagBend-it</b>	
MBT	Magnet on a flexible shaft
<b>MagSweep</b>	
MSP-24	Shop floor magnet on wheels, 24" swath
<b>MagWand</b> – rolling pick-up, quick unloading	
MW-B	16" length
MW-1	22" length
MW-2	36" length
	48" length



# Bessey Replaceable Parts and Accessories



## Bessey Replaceable Parts and Accessories

Product#	Suitable For ...
<b>Plastic Caps</b>	
SKS10/20	TG2, TG4, MMS & 660S
SKS20/40	TG4, TG4.5, TG5.5, TGK, 1200S, SGL & VC
TRP2.5	TGJ
TRP4.0	TG4.0
TRP4.5	TG4.5
TRP5	TGK, TG5.5 & TG7.0
<b>Standard Snap-on Pads (4 per package)</b>	
SOP - SMNPV1	TGJ2.5
SOP - SMNPV2	TG4.0, RSC-8, 660S
SOP - SMNPV3	TG5.5, TG7.0, TGK4.5, RSC-12 & 24, 1200S, SQ, SGL
<b>Stainless Steel Snap-on Pads With Plastic Caps (4 per package)</b>	
SOP - SMWPV1	TGJ2.5
SOP - SMWPV2	TG4.0, TG4.5, RSC-8, 660S
SOP - SMWPV3	TG5.5, TG7.0, TGK4.5, RSC-12 & 24, 1200S, SQ, SGL
<b>Large Snap-on Pads diameter size 3-1/8"</b>	
SOP - LGWPV1	TG4.0, TG4.5, RSC-8, 660S
SOP - LGWPV2	TG5.5, TG7.0, TGK4.5, RSC-12 & 24, 1200S, SQ, SGL
<b>MopEds</b>	
Standard MorPad	12/18/24/4800 Series; SQ/STB (with spindle)
7200P	7200 Series
MPD-R (Rough Face)	12/18/24/4800 Series
MPD-V (V Groove)	12/18/24/4800 Series
<b>Bessey Grip Handles (2 per package)</b>	
BGSM-100	RSC, 660S, 1200S, SQ-4, VC & J18-8
BGLG-120	SGL, 1800S, 2400S, 2400J & SQ Series 8" and larger
<b>Wood Handle/Spindle</b>	
H/S-WHNPV1	TGJ2.5
H/S-WHNPV2	TG4.0, RSC-8, 660S
H/S-WHNPV3	TG4.5
H/S-WHNPV4	TG5.5, TG7.0, TGK4.5, RSC-12 & 24, 1200S, SGL
<b>2k Handle/Spindle With Pads</b>	
H/S-2KWPV1	TGJ2.5
H/S-2KWPV2	TG4.0, RSC-8, 660S
H/S-2KWPV3	TG4.5
H/S-2KWPV4	TG5.5, TG7.0, TGK4.5, RSC-12 & 24, 1200S, SGL
<b>Replacement Spindles</b>	
1200/1800S	1200S & 1800S clamps
2400S	2400S and SQ series clamps
4800S	4800S and STB series clamps
HPCS	8500HPC clamps
7200S	7200S clamps
<b>Replacement Sliding arms</b>	
1200A Arm	Armonly
1800A Arm	Armonly
2400A Arm	Armonly
HPCA	Armonly
4800A Arm	Armonly
7200A Arm	Armonly
NLR7200	Nut & Lock Ring for 7200 Series
<b>Replacement Jedges</b>	
7200W	for 7200 series
	for 8500 series





# Snips, Knives & Cutters

Bessey industrial snips and cutters offer tradesmen the advantage of choosing fine quality at a competitive price. Quality in cutting tools means a sharper cut – and a cutting edge with a longer life.

## Bessey Compound Lever Snips

### Aviation Snips

- High grade steel cutting blades – HRC of 61 to 62.5
- Micro-serrations for slip proof working



### Special Hard Cutting Snips

- Special high grade steel cutting blade – HRC up to 64
- Micro-serrations for slip proof working

### New Generation Offset Snips

- Special high grade steel cutting blade – HRC up to 64
- Optimized leverage rotation - 25% less effort
- Optimized edge shape: slip-proof, non-serrated blade
- Compact cutter head for maximum maneuverability

### Offset Snips - Short Cut

- Special high grade steel cutting blade – HRC up to 62
- Micro-serrations for slip proof working
- Special flat cutter head enables cutting narrowest radii

### Offset Snips - Long Cut

- High grade steel cutting blade – HRC up to 62
- Micro-serrations for slip proof working

### Long Nose, All Purpose Offset Snip

- High grade steel, extra long cutting blade designed for continuous cuts – HRC up to 62
- Angled cutter heads keeps hands free from work

### Premium Offset Snips

- Case-hardened, high-speed steel edges – HRC up to 68

### Titanium-Nitride (TiN) Coated Offset Snips

- Case-hardened, high-speed steel blades – HRC up to 68
- Titanium-Nitride (TiN) coated for longer service life

## Bessey Compound Lever Snips

Product#	Overall length Inches	Blade length Inches
<b>Aviation Snips</b>		
D16S-be	9-1/2	1-3/4
D16I-be	9-1/2	1-9/16
D16-be	9-1/2	1-9/16
<b>Special Hard Cutting Snips</b>		
D29SS-BE	10-1/4	1-9/16
D29SSL-BE	10-1/4	1-9/16
<b>New Generation Offset Snips</b>		
D29aSS-be	10-1/4	1-5/16
D29aSSL-be	10-1/4	1-5/16
<b>Offset Snips-Short Cuts</b>		
D08-BE	9	1-1/16
D08L-BE	9	1-1/16
<b>Offset Snips-Long Cuts</b>		
D16A-BE	9-1/2	1-5/16
D16AL-BE	9-1/2	1-5/16
<b>Long-Nose, All-Purpose Offset Snip</b>		
D22AL-BE	11	2-1/2
<b>Premium Offset Snips</b>		
D27AH-BE	10-1/4	1-5/16
D27AHL-BE	10-1/4	1-5/16
<b>Titanium Nitride (tin) Coated Offset Snips</b>		
D27AH-TIN-BE	10-1/4	1-5/16
D27AHL-TIN-BE	10-1/4	1-5/16



Short, straight & narrow curved cuts – right



Short, straight & narrow curved cuts – left



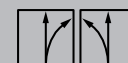
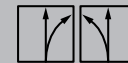
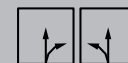
Short, straight & narrow curved cuts – left or right



Continuous, straight & curved cuts – left



Continuous, straight & curved cuts – right



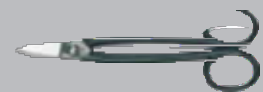
## A close-up photograph showing a person's hands using a pair of black-handled side cutters to cut a metal strap on a wooden crate. The person is wearing a blue long-sleeved shirt. The crate is made of light-colored wood and has several metal straps wrapped around it. The background is slightly blurred, showing what appears to be a warehouse or storage area with shelves.

- Special high grade steel cutting blade
- Prevents bands (1" wide/.6 mm thick) from springing back



- Heavy duty shears with stainless steel blades
- Offset, black lacquered handles, extended finger grip

	Overall length	Blade length
Product#	inches	inches
<b>Safety Steel Strip Cutter</b>		
D122S-BE	10-1/4	1-1/2
<b>Nibbler</b>		
D23-BE	10-1/2	
<b>MultiSnip Multi Purpose Cutters</b>		
D47-BE	5-1/2	1-1/4
D48-BE	7-3/4	1-5/8
D48A-BE	7-1/2	1-3/8
<b>Cable Cutters</b>		
D49-BE	6-1/2	10
<b>Combinox Multi-Purpose Cutter</b>		
D50-BE	7-1/2	1-3/8
<b>MultiSnip Master</b>		
D51A-BE	9-1/4	2
<b>JeWeler's Snip</b>		
75-erDi	7	1-5/16
<b>Electrician's Scissors</b>		
D53-BE	5	1-9/16
<b>Professional Shears</b>		
D860-200-BE	8	3-3/4
D860-225-BE	9	4-1/2
D860-250-BE	10	4-3/4



## Bessey Pattern Snips

### American Pattern Snips

- Quality steel cutting blade

## SuperPower Snips



- Innovative upgrade to proven performer ...compound lever style needs 50% less hand force than ordinary pattern snips
- Self-opening jaws with reliable locking closure
- Cuts up to 19 ga. (1.0mm) cold rolled steel or 25 ga. (0.6mm) stainless steel – HRC up to 62
- Large handle loops accommodate safety work gloves

## Bessey Folding Utility Knives



### All knives feature:

- Folding and locking blades with belt-clip
- Easy blade change using standard utility blades
- Spring blade release

### Model D-BKPH also feature:

- Thumb cushion
- Blade storage with spring release, 5 blades included

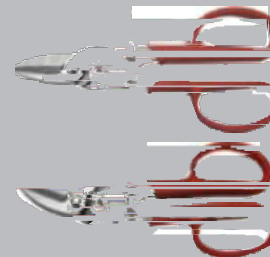
## Bessey Pattern Snips

Product#	Overall length inches	Blade length inches
<b>American Pattern Snips</b>		
D146-200-BE	8	1-5/8
D146-250-BE	10	2-1/8
D146-300-BE	12	2-11/16
	14	2-13/16



## SuperPower Snips

D-SPS8	8-1/2	1-3/4
D-SPS11	11-1/2	2-1/4
<b>Offset Blade</b>		
D-SPC8	8-1/2	1-3/4
	11-1/2	2-1/4



## Bessey Folding Utility Knives

	le	
D-BKAH	4	6-1/4
<b>Hardwood Handle</b>		
D-BKWH	4	6-1/4
<b>ABS Comfort Grip Handle</b>		
D-BKPH	4	6-1/4





# Specialty Clamps/Hold Down Systems For Welding & Fabricating

## Kant-Twist® Clamps

- Cantilever design—floating jaws always stay parallel
- Built-in “V” block to hold round stock
- Copper plated jaws and screws resist weld spatter

### Stainless Steel Kant-Twist®

- For use where corrosion and magnetism are a problem

### Kant-Twist® Weaver Grip

- Comfort grip – max. pressure/less effort
- Easy to tap on and off
- High quality ABS plastic for durability

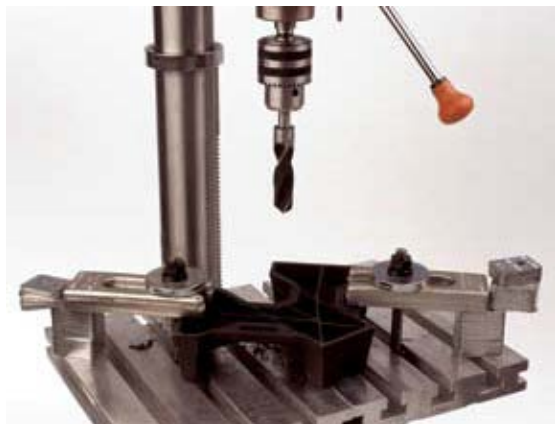
## RiteHite Hold Down System

- Self-positioning, single component design
- Swivel rocker attached body – prevents loss
- Instant set-up – and eliminates shim stock
- Wide clamping range— instant adjustment to 5"
- Strong, ductile iron body
- Uses standard T slot hardware available from your industrial supply distributor



## Quick Set Hold Down System

- Quick Set Blocks: drilled and riveted one end – individual leaves rotate independently to match clamping height (leaf thickness approx. 1/8")
- Quick Set Hardened Straps: drop forged or cold-drawn, heat-treated straps
- Quick Set heavy duty Washers: 3/8" thick, 2-5/8" OD – matched to Quick Set System



### Kant-Twist® Clamps

Product#	Throat Depth Open	Throat Depth Closed	Clamping Capacity	Clamping Force
	inches	inches	inches	pounds
<b>Original Kant-Twist®</b>				
3/4KT	3/8	3/8	3/4	200
1KT	1/2	1/2	1-1/16	300
2KT	1-1/8	1-1/4	2	700
2-1/2DKT	2	1-13/16	2-7/16	700
3KT	1-1/4	1-3/4	3	1500
4-1/2DKT	2-1/4	2-1/2	4-1/2	1500
6KT	2-1/8	3-3/8	6	1800
6DKT	4-5/8	5-1/2	6	1800
<b>Stainless Steel Kant-Twist®</b>				
	2-1/4	2-1/2	4-1/2	1500

Product#	For Kant-Twist® Clamps # ...
<b>Kant-Twist® Weaver Grip</b>	
1 WG	1KT
2 WG	2KT, 2-1/2DKT
3 WG	3KT, 4-1/2DKT, 4-1/2DKTSS
	6KT, 6DKT

### RiteHite Hold Down System

Product#	Bolt Size inches	Max. Clamping Height inches	Nominal Dimensions inches	Recommended Load Limit pounds	Max. Torque lb-FT
<b>Model L - Long Reach</b>					
375L	3/8	1-1/4	3-3/4 x 1-1/8 x 1-1/4	7,000	43
500L	1/2	2-1/2	5-3/4 x 1-7/16 x 1-1/2	8,800	73
625L	5/8	3-1/2	6-3/4 x 1-3/4 x 1-5/8	14,500	163
750L	3/4	5	9 x 2-1/8 x 2-1/4	19,000	237
1000L	1	5	11-1/8 x 2-7/8 x 3-3/8	51,000	850
<b>Model S - Short Reach (Close Set-ups)</b>					
376S	3/8	1	3 x 1-1/8 x 1-1/4	8,800	55
501S	1/2	1-3/4	4-1/4 x 1-7/16 x 1-1/2	13,200	110
626S	5/8	2-3/4	5-1/2 x 1-3/4 x 1-5/8	19,000	213
751S	3/4	3-1/2	7 x 2-1/8 x 2-1/4	27,600	345
	1	3	9 x 2-7/8 x 3-3/8	67,000	1,116

### Quick Set Hold Down System

Product#	Nominal height inches
<b>Quick Set Blocks</b>	
SB-82	2
SB-83	3
	4

Product#	For Bolts inches	Nominal length inches	Nominal Width inches	Nominal Thickness inches
<b>Quick Set Straps</b>				
PS-876	5/8-7/8	6	2	1
S-100	3/4-1	10	2-3/4	19/16
	3/4-1	14	2-3/4	19/16

Product#	For Bolts inches	Nominal Thickness inches
<b>Quick Set Washers</b>		
W-500	1/2	3/8
W-625	5/8	3/8
W-750	3/4	3/8
W-875	7/8	3/8
	1	3/8



This chart is for general guidelines only. Specific values may vary depending on but not limited to bolt size and strength, condition, size and pitch of threads, coefficient of friction between parts and other variable factors.

# Bench Vises

## Bessey Industrial Vises

### Bessey Mechanics Vises feature:

- High tensile strength (36,000 psi gray iron castings)
- Machined to close tolerances for smooth action
- Large diameter, high-quality steel lead screw; Acme thread
- Robust sliding pin T-handle
- Replaceable, hardened and serrated jaw plates

### Bessey Heavy Duty Mechanics Bench Vise

- Enclosed main screw to avoid dirt accumulation

### Bessey Medium Duty Mechanics Bench Vise

- 360° swivel base assembly available as accessory  
– feature time saving central lock-down device

### Bessey All-Steel Utility Vise

- Tough, all-steel, general purpose vise
- 360° rotation swivel base with 2 lock downs
- Large flat anvil with horn



## Yost Industrial Vises

**All Yost Vises Feature:** large anvil; HD lead screw, rolled Acme thread; precision-machined, ductile casting; 60,000 psi tensile; robust sliding pin T-handle; interlocking 360° swivel with 2 lock downs; meshed inner gears prevents slippage

### Yost 200 Series Machinist Vise

- Replaceable hardened steel serrated jaws
- Conforms to US Gov. Fed. Spec. GGG-V-410B Type VI Class 2

### Yost HD 30 Series Combination Pipe & Bench Vise

- Replaceable hardened steel serrated jaws
- Set-back, integrated pipe jaws grip without crushing or bending; set back-won't impede use as a machinist vise
- Conforms to US Gov. Fed. Spec. GGG-V-410B Type VI

### Yost Medium Duty Tradesman Series Vises

- Replaceable hardened steel serrated jaws
- Hardened vise jaws replaceable & reversible
- Interlocking swivel base has full 360° rotation with 2 lock downs and meshed inner gears to prevent slippage
- Set-back, integrated pipe jaws grip without crushing or bending; set back-won't impede use as a machinist vise

### Aluminum Jaw Caps (sizes: 3-1/2", 4", 4-1/2", 5", 6" and 8")

- Reduce marring – available as an accessory
- Meets US Gov. Fed. Spec GGG-C-00137B

## Bessey Woodworking Vises

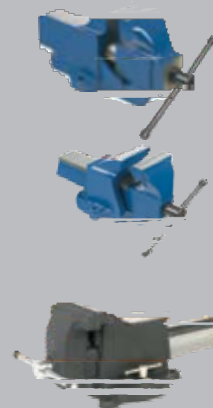
- High-quality gray iron castings
- Quick-release function to speed up clamping work
- Extra long openings of 11"
- Front jaws have integrated bench dogs

## Vises

Product#	Jaw Width Inches	Throat depth Inches	Jaw Opening Inches	Weight Pounds
<b>Bessey Heavy duty mechanics Bench Vises</b>				
BV-REHD-4	4	3-1/8	4-1/4	33
BV-REHD-5	5	3-7/16	5-1/4	56
BV-REHD-6	6	3-3/4	6-1/4	88
<b>Bessey Medium duty mechanics Bench Vises</b>				
BV-RES-4	4	3	4-1/4	29
BV-RES-5	5	3-1/4	5-1/2	48
BV-RES-6	6	3-5/8	7-1/2	65
<b>Bessey All-Steel Utility Vises</b>				
BV-UV 4	4	2-1/4	4	16
BV-UV 5	5	2-5/8	5	24
BV-UV 6	6	3	6	32
	8	3-1/2	8	45

### 360° Swivel bases available in 3 sizes:

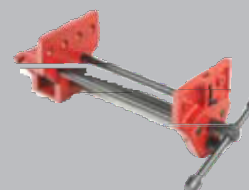
SB-RES-4 (4 inch); SB-RES-5 (5 inch); SB-RES-6 (6 inch)



Product#	Jaw Width Inches	Throat depth Inches	Jaw Opening Inches	Weight Pounds
<b>Yost Heavy duty 200 Series Machinist Vises</b>				
204	4	4	6-1/2	58
205	5	5	8	75
206	6	6-1/4	10	115
208	8	8	12	180
<b>Yost Heavy duty 30 Series Combination Pipe and Bench Vises</b>				
31C	3-1/2	4-1/2	4	40
32C	4-1/2	5-1/2	6	63
33C	5	6	7-1/2	96
34C	6	7-1/2	10	165
<b>Yost Medium duty Tradesman Series Vises</b>				
45C	4-1/2	4-1/2	4-1/2	44
55C	5-1/2	4-1/2	5	50
65C	6-1/2	5-1/2	6-1/2	75
	8	6	7-1/2	105



Product#	Jaw Width Inches	Throat depth Inches	Jaw Opening Inches	Weight Pounds
<b>Bessey Wood Working Vises</b>				
BV-W611	2-1/4	6	11	17
BV-W711	2-1/2	7	11	24
	2-1/2	9	11	30



# Industrial Hammers



## Screw-on Tip Hammers

- Meets GGG-H-33A US Government Specs
- Supplied with zinc head (holder) ... tips sold separately
- Color coded replaceable tips in 5 harnesses; interchangeable with most other national brands

## Press-on Tip Hammers

- Meets GGG-H-33A US Government Specs
- Precision balanced steel head - replaceable urethane tips
- Add "-1" to hammer number when ordering tip only

## "Big Orange" Hammers

- Virtually indestructible, non-marring urethane head
- absorbs shock, won't mushroom or split, non-sparking

## Brass Hammers

- Meets GGG-H-33A US Government Specs
- High purity brass head; long life; non-sparking; non-magnetic

## Copper Hammers

- Meets GGG-H-33A US Government Specs
- 99.9% pure copper head – non-sparking and non-magnetic

## Lead Hammers

- Meets GGG-H-33A US Government Specs
- Genuine 4% antimony lead; tubular steel handle; comfortable vinyl grip; molded-in pin holds head secure

## Dead Blow Hammers

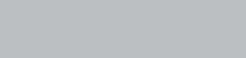
- Shot-loaded head: 30% more force, no recoil; non-sparking, heat resistant; 20X life of rawhide or metal head
- Extruded fiberglass handle - less breakage, less vibration, less fatigue; non-slip ribbed grip

### Industrial Hammers

Product#	head diameter inches	head length inches	handle length inches
<b>Fiberglass Handle/Holder For Screw-on tips (next table)</b>			
773F	1-1/2"	4-1/2	12
	2	5	13

To Fit handle/holder # ...			
product#		description	material
Screw-On tips			
46G	57G	tough (Green)	Vinyl
46R	57R	medium (Red)	Vinyl
46BR	57BR	soft (Brown)	Vinyl
46CR	57CR	med.hard (Cream)	Nylon
		hard (Black)	Nylon

Product#	head diameter inches	head length inches	handle length inches
<b>Press-on tip Hammers (Fiberglass Handle)</b>			
703F	7/8	3	11
707F	1-1/4	3-1/4	13
<b>"Big Orange" Hammers (Fiberglass Handle)</b>			
790	1-5/8	2-1/2	10
791	1-7/8	3-1/4	10-1/2
792	2-5/16	3-7/8	12-1/2
793	2-3/4	4-5/8	12-1/2
<b>Brass Hammers (Fiberglass Handle)</b>			
B750F	7/8	1-13/16	11
B751F	1	2-9/16	12
B752F	1-1/4	3-1/4	13
B753F	1-1/2	3-3/4	15
B754F	1-3/4	4-1/4	15
B755F	1-7/8	3-3/4	15
B7510F	2	6-3/4	21
<b>Copper Hammers (Fiberglass Handle)</b>			
C760F	7/8	1-13/16	11
C761F	1	2-5/8	12
C762F	11/4	3-5/16	13
C763F	11/2	3-3/4	15
C764F	13/4	4-1/4	15
C765F	17/8	3-3/4	15
C7610F	2	6-3/4	21
<b>Lead Hammers (Steel tube Handles)</b>			
L732	1-1/8	2-5/8	10
L735	1-5/8	3-3/4	10
<b>Dead Blow Hammers (Fiberglass Handle)</b>			
SF-1	1-1/2		11
SF-2	2		12
SF-3	2-3/8		12
SF-4	2-3/4		13





## Mor-Head Industrial Hammers

- Face yields to struck surface on contact
- Replaceable handles and heads

### Mo

#### r-Head Soft Alloy Tapping Hammer

- Dense, wear-resistant, non-destructive, ductile alloy

#### Mor-Head Soft Alloy Sledge Hammer

- For heavy duty impacts
- Dense, wear-resistant, non-destructive, ductile alloy

#### Mor-Head Brass Hammers

- Variety of weights for light to medium duty impacts
- Non-destructive, wear resistant brass

#### Mor-Head Brass Sledge Hammer

- 9lb. head for heavy duty impacts
- Non-destructive, wear resistant yellow brass

#### Mor-Head Easy Replacement Handles

- Indestructible steel shank
- Contoured synthetic rubber grips - comfortable, safe, non-slip

## X4 Torque Multiplier

- Geared head offers 4X the power of ordinary torque wrench
- Requires no air or electricity - invaluable for maintenance, production or equipment service
- Up to 12,000 ft. lbs. of torque
- Used with torque wrench for precision
- High grade alloy steel - maximum strength and service life
- More than one X4 can be stacked to provide extra ratio

#### Anti-Backlash Torque Multiplier

- Limits risk of "spring back" when extender bar is used
- Coupled with larger model - makes entire system anti-backlash

## Chemicals & Compounds

### Alvin Compounds

**Lab-metal®** - the original ready-to-use metal putty

- No mixing - hardens quickly to metal
- Can be drilled, tapped, ground, milled, chiseled, sanded, etc.
- Withstands heat up to 350°F/177°C
- Aluminum filled compound - impervious to petro-products
- Bonds to clean, dry surfaces - metal, wood, plastic, glass, etc.

#### Hi-Temp Lab-metal®

- Withstands heat up to 1000°F/538°C
- Repairs manifolds, core boxes, castings, etc.

#### Lab-solvent

- Surface-prep for regular & Hi-Temp Lab-metal
- Thins Lab-metal for brushing or spraying - leaves no film

#### Heat Block - heat absorbing, insulating paste

- Insulates adjacent material against heat transfer during welding, soldering brazing or other heat treatment
- Non-toxic and is easily applied direct from container

## Bessey Spatter Release

#### Water Based Spatter Release

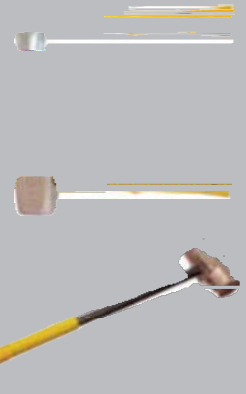
- Won't harm painted surfaces, welds through when wet, environmentally friendly - non-flammable, non-toxic, biodegradable

#### Solvent Based Spatter Release

- Heat resistant to withstand high temperatures, paint compatible and the spray agent dries quickly - leaves a long lasting spatter release coating - no silicones, CFC's or trichloroethylene, uses CO<sub>2</sub> propellant, non-flammable

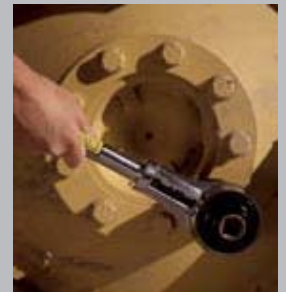
## Mor-Head Industrial Hammers

Complete hammer	head Only		handle Only	
	Product #	dimension inches	Product #	length inches
<b>Mor-Head Soft Alloy Tapping Hammer</b>				
SHD-2	SHD-2H	3-1/4 x 1-1/2	H-905	11
SHD-3	SHD-3H	3-7/8 x 2	H-905	11
SHD-4	SHD-4H	4-3/4 x 2-3/8	H-905	11
SHD-5	SHD-5H	5 x 2-3/8	H-905	11
<b>Mor-Head Soft Alloy Sledge Hammer</b>				
SLG-10	SLG-H	6-1/2 x 3	SLG-L	30
<b>Mor-Head Brass Hammer</b>				
BHD-1	BHD-1H	3 x 1-1/2	H-905	11
BHD-2	BHD-2H	3-1/4 x 1-5/8	H-905	11
BHD-3	BHD-3H	3-7/8 x 2	H-905	11
BHD-4	BHD-4H	4-3/4 x 2-3/8	H-905	11
BHD-5	BHD-5H	5 x 2-3/8	H-905	11
<b>Mor-Head Brass Sledge Hammer</b>				
BHD-9	BHD-9H	6-1/2 x 2-1/2	SLG-L	30



## X4 Torque Multipliers

Product#	Input Capacity Foot/Pounds	Output Capacity Foot/Pounds	Input Drive Inches	Output Drive Inches	Ratio
Jm-750	250	1,000	1/2	3/4	4:01
Jm-1000	500	2,000	3/4	1	4:01
Jm-1200	209	3,000	3/4	1-1/2	14.3:1
Jm-1500	923	4,000	1	1-1/2	4.33:1
Jm-2000	1739	8,000	1	1-1/2	4.6:1
Jm-2500	2000	12,000	1	2-1/2	6:01
<b>x4 Anti-Backlash Torque Multiplier</b>					
	500	2,000	3/4	1	



## Alvin Compounds

Product#	Unit/Container Imperial/Metric
<b>Lab-Metal®</b>	
LM-06	6 oz/170 g
LM-12	12 oz/340g
LM-24	24 oz/680 g
LM-48	48 oz/1.4 kg
<b>Hi-Temp Lab-Metal®</b>	
HT-14	14 oz/397 g
HT-24	24 oz/680 g
<b>Lab-Solvent</b>	
LS-16	16 oz/473 ml
LS-128	1 gal/3.8L
<b>Heat Block</b>	
	1 pint/.47L



## Bessey Spatter Release

Product#	Unit/Container Imperial/Metric	description
16300-16	16 oz can	water based
	16 oz can	solvent based



## Cutting Fluids & Compounds

### Felton Stik-Kut™ Lubricating Stick Wax

- For grinding wheels, sanding belts and saw blades
- Eliminates heat buildup and belt loading – extends wheel life

### Felton dark and light thread Cutting Oil

- Reduces friction; longer tool life; clean burr-free thread
- Forms tough film – for use on a wide variety of materials

### Felton Fel Saw™ Semi-Synthetic Band-Saw Fluid

- Improves blade life; reduces machine wear
- Contains rust and corrosion inhibitors

### Felton Option 1 Metal Cutting Fluid

- Water based; Non-WHMIS – environmentally friendly
- No chlorine, no sulfur, non-toxic formula is safe to use

### Felton a9 aluminum Cutting Fluid

- Specifically for aluminum – use for tapping, drilling, boring, milling, turning, broaching, reaming and sawing. May be used on other metals; Non-WHMIS – environmentally friendly

### Felton Air-Flo air tool Oil

- High quality air tool and airline lubricant

### Felton New Rapid Tap™ Cutting Fluid

- Fine machined finish even on tough materials such as aluminum, beryllium, brass, bronze, cast iron, copper, iconel, magnesium, molybdenum, stainless steel, and stellite
- No 1,1,1 Trichloroethane – ozone friendly, non-toxic, and non-flammable; non-WHMIS

## Hylomar Gasket /Jointing Compounds

- Non-hardening, non-setting – unlimited assembly time
- Resists flame, dust, and moisture; engine by-products; water, lubricants, fuels, refrigerants - see label for complete list
- Temperature range – 120°F (50°C) to 480°F (250°C)

## Bearing Heaters

### Reco Induction Bearing Heaters

- Extend bearing life and cut operating cost by eliminating hammering and pounding to cold-mount bearings
- Works on bearings, sprockets, gears, couplings, sleeves
- Reduces risk to operator from flames, torches or oil baths
- Also demagnetizes bearings – easy to use, ready in minutes

#### Model SC110d (110V or 220V)

- Bearing capacity: 4-3/8" x 11" O.D. (14" OD with optional raising blocks)
- Computer chip monitors and stabilizes temperature
- Display panel (pre-set times, temperatures) & auto shut off

#### Model SC110v (110V or 220V)

- Bearing capacity: 4-3/8" x 11" O.D. (14" OD with optional raising blocks)

#### Model BC (220V, 440V or 550V)

- Bearing capacity: 8" x 22" O.D. (32" OD with optional raising blocks)

#### Model BC Special (220V, 440V or 550V)

- Bearing capacity: 12-1/4" x 22" O.D. (32" OD with optional raising blocks)

### Pyrometer/Thermometer

- Multi-purpose measuring device for bearings, gears, etc.
- Digital readout from -50°C (-58°F) to +1300°C (+2000°F)

## Industrial Cutting Fluids & Compounds

Felton & Hylomar Fluids and Compounds are only available in Canada

Product#	Unit/Container Imperial/Metric
<b>Felton Stik-Kut Lubricating Stick Wax</b>	
15-SK	15 oz stick
<b>Felton dark thread Cutting Oil</b>	
TCO14-01G	1 US gal/3.785L
TCO14-05G	5 US gal/18.925L
<b>Felton light thread Cutting Oil</b>	
Tco16-01g	1 uS gal/3.785l
Tco16-05g	5 uS gal/18.925l
<b>Felton Fel Saw Semi-Synthetic Band Saw Fluid</b>	
01G-RS	1 US gal/3.785L
05G-RS	5 US gal/18.925L
<b>Felton Option 1 Cutting Fluid</b>	
OPT114	4 oz/118ml
OPT455	16oz/455ml
OPT4	1 US gal/3.785L
OPT20	5 US gal/18.925L
OPT205	45gal/170.325L
<b>Felton a9 aluminum Cutting Fluid</b>	
A9114	4 oz/118ml
A9455	16oz/455ml
A94	1 US gal/3.785L
A920	5 US gal/18.925L
A9205	45gal/170.325L
<b>Felton Air-Flo air tool Oil</b>	
af-pNT	1 pINT/.47l
af-01g	1 uS gal/3.785l
<b>Felton Rapid Tap Cutting Fluid</b>	
RT114	4 oz/118ml
RT455	16oz/455ml
RT4	1 US gal/3.785L
RT20	5 US gal/18.925L
RT205	45gal/170.325L
<b>Hylomar gasket &amp; Jointing Compounds</b>	
PL32/H (heavy)	100g tube
PL32/HC (heavy)	350g cartridge
PL32/M (medium)	100g tube



### Reco Induction Bearing Heaters

Product #	Voltage Volts (amps)	Standard Cross Bars Inches	Optional Cross Bars Inches
SC 110D	110V (17amp)	3/4, 2	1/2*, 1-1/4
SC 110V	110V (17amp)	3/4, 2	1/2*, 1-1/4
SC 220	220V (9 amp)	3/4, 2	1/2*, 1-1/4
BC220	220V (30amp)	1-1/4, 3	3/4, 1, 2
BC440	440V (20 amp)	1-1/4, 3	3/4, 1, 2
BC550	550V (20amp)	1-1/4, 3	3/4, 1, 2
BCS 220	220V (30amp)	1-1/4, 3	1*, 2
BCS 440	440V (20amp)	1-1/4, 3	1*, 2
BCS 550	550V (20amp)	1-1/4, 3	1*, 2

Only available in the USA

### Raising Blocks

Product #	Height fits model #	Width Inches	Inches
SCRB	SC	2-3/8	2-5/8
	BC, BC Special	5	3-5/8

### Pyrometer/Thermometer

Product #	Description
HH-11	Pyrometer/Thermometer w/probe and flex cord
	Replacement probe with handle



**WARNING:** Do NOT operate an induction bearing heater if you wear a heart pace-maker. The strong magnetic field emitted by the heater may affect operation of such devices.





Bessey Tools North America reserves the right to alter technical specifications. Some product may vary from region to region to meet the requirements of the international marketplace.

Errors and omissions excepted, Bessey believes that to the best of its knowledge the product illustrations and descriptions provided in this catalog are accurate. However, such descriptions and illustrations are for the sole purpose of identification, and do not express or imply any warranty or condition that the Products are merchantable, or fit for a particular purpose or that the products will necessarily conform to the illustrations or descriptions. Customer is solely responsible for reliance on or use of any information, and for use or application of any product. Bessey expressly disclaims any liability for direct, indirect, consequential or incidental damages in all events and for all damages, losses and causes of action beyond the purchase price paid for the products in question.

#### WARRANTY POLICY

Bessey brand clamping products are warranted under a Limited Lifetime program. We warrant that the products will be free from defects in material and workmanship for the life of the tool or we will replace, refund or repair it; provided that this warranty does not cover any damage caused by abuse, misuse, improper handling, negligence, alteration or normal wear and tear.

Other tools including but not limited to snips, c-clamps, some specialty clamps, magnets, bearing heaters and pyrometers are guaranteed for 1 year. For all products, Bessey Tools North America reserves the right to refuse either a repair or a replacement.

Bessey Tools North America makes no other warranties, express or implied, with respect to the tools or their suitability for specific applications. Bessey Tools North America neither assumes, nor authorizes any person to assume for it, any other warranty, or obligation express or implied. For a more detailed listing of Terms, Conditions and Warranty please contact Bessey Tools North America direct and toll-free at 1.800.828.1004.

Bessey Tools North America will, at its sole discretion, define if a product submitted for warranty evaluation is eligible for a warranty return and then, if eligible, offer either to repair, refund or replace any defective product. To initiate such a claim, please call and request a return authorization number then, return all parts of the broken tool(s) plus a written warranty evaluation request (with contact information) in a freight prepaid format to Bessey Tools North America.

This warranty gives you specific legal rights. Please note: you may also have other rights, which could vary depending upon state, federal and provincial law.

#### CAUTION: Clamping Tools

Clamping tools are not suitable for lifting, pulling or transporting. Improper use may lead to personal injuries or material damages. They should only be clamped manually without using any auxiliary tools.

#### CAUTION: Cutting Technology

Always wear appropriate protection including goggles and gloves while working. Sheared parts may injure the workers and bystanders. Disconnect the power supply while working on electrical devices to avoid the risk of electric shock. Always ensure the cutting direction while using snips, knives and cutters is away from your body. Only use original replacement parts whenever required. Tools should only be used manually without using any auxiliary tools. Improper use may lead to personal injuries or material damages.







Simply better.



---

Please feel free to contact us.

**TheToolStore.ca**

114 Erie St N.

Leamington, ON

Canada

N8H 3A2

**Phone:** 1-888-768-8370

**Email:** [info@thetoolstore.ca](mailto:info@thetoolstore.ca)