



FACTORY DIRECT RETAIL CATALOG



All trademarked images are the property of their respective owners and may be registered marks in some countries. No affiliation or endorsement claim, express or implied, is made by their use. All products advertised here are AMSOIL-engineered for use in the applications shown.

TO ORDER – Call 1-800-956-5695, 7 a.m. to 7 p.m. Central Time, M – F



The First in Synthetics®

In 1972, AMSOIL set all-new standards for motor oil quality when it introduced the world's first synthetic motor oil to meet American Petroleum Institute (API) service requirements. Today, AMSOIL remains steadfast in its commitment to quality and precision lubricant engineering.

The company's state-of-the-art mechanical testing laboratory allows it to stay on the cutting edge of lubricant technology. Equipped with three 480-sq. ft. dynamometer cells capable of housing a minimum of two dynamometers each, the facility allows AMSOIL to test motor oil performance on-site, allowing quick turn-around times, the ability to modify conditions to measure different oil properties and unique testing not available elsewhere.



All trademarked images are the property of their respective owners and may be registered marks in some countries. No affiliation or endorsement claim, express or implied, is made by their use. All products advertised here are AMSOIL-engineered for use in the applications shown.

2

TO ORDER – Call 1-800-956-5695, 7 a.m. to 7 p.m. Central Time, M – F

Three Tiers of AMSOIL Quality

CHOOSE YOUR OIL DRAIN INTERVAL.

Signature Series
SIGNATURE SERIES

**ONCE
PER
YEAR**



For those who want the absolute best engine protection, performance and maximum value through extended drain intervals.

XL
EXTENDED LIFE

**TWICE
PER
YEAR**



For those who want extra engine protection and performance and the convenience of twice-per-year oil changes.

OE
ORIGINAL EQUIPMENT

**ACCORDING TO
OWNER'S
MANUAL**



For those who want excellent engine protection and performance for vehicle manufacturer-recommended oil change intervals.

Ac. J. Amato **SIGNATURE SERIES**



AMR

AMSOIL Signature Series Synthetic Motor Oil represents the pinnacle of lubrication science. It is the result of over 40 years of synthetic lubricant engineering. Signature Series brings not only industry-leading performance, but top value as well; its extended-drain performance delivers guaranteed protection for up to 40,000 kilometers, 700 hours of operation or one year, whichever comes first. AMSOIL Signature Series Synthetic Motor Oil offers a rare combination of performance and value.

- **Engineered** to outperform conventional petroleum oils.
- **Reduces** friction, heat and wear for maximum power, performance and fuel efficiency.
- **Resists** high-temperature burn-off, chemical breakdown and sludging – keeps engines clean.
- **Outstanding** low-temperature fluidity for fast, dependable winter starts and immediate startup protection.
- **Exceeds** the most demanding worldwide performance standards and meets warranty requirements for all domestic and imported passenger car engines, both turbocharged and non-turbocharged.

ASM

ALM

AZO

ASL

ATM

AZF



All trademarked images are the property of their respective owners and may be registered marks in some countries. No affiliation or endorsement claim, express or implied, is made by their use. All products advertised here are AMSOIL-engineered for use in the applications shown.



Signature Series 0W-20 Synthetic Motor Oil

API Service SN (Resource Conserving), SM... • ILSAC GF-5, 4... • GM dexos1™

STOCK#	UNITS	PKG./SIZE	WT.LBS.	COST
ASMQTC	EA	(1) 946-ml Bottle	2.1	14.05
ASMQTC	CA	(12) 946-ml Bottles	25.2	167.40
ASM1G	EA	(1) 3.78-litre Bottle	7.9	54.95
ASM1G	CA	(4) 3.78-litre Bottles	31.6	218.20

Signature Series 5W-20 Synthetic Motor Oil

API Service SN (Resource Conserving), SM... • ILSAC GF-5, 4... • GM dexos1™

STOCK#	UNITS	PKG./SIZE	WT.LBS.	COST
ALMQTC	EA	(1) 946-ml Bottle	2.1	13.50
ALMQTC	CA	(12) 946-ml Bottles	25.2	160.80
ALM1G	EA	(1) 3.78-litre Bottle	7.9	52.85
ALM1G	CA	(4) 3.78-litre Bottles	31.6	209.80

Signature Series 0W-30 Synthetic Motor Oil

API Service SN (Resource Conserving), SM... • ILSAC GF-5, 4... • GM dexos1™

STOCK#	UNITS	PKG./SIZE	WT.LBS.	COST
AZOOTC	EA	(1) 946-ml Bottle	2.1	14.05
AZOOTC	CA	(12) 946-ml Bottles	25.2	167.40
AZO1G	EA	(1) 3.78-litre Bottle	7.9	54.95
AZO1G	CA	(4) 3.78-litre Bottles	31.6	218.20

Signature Series 5W-30 Synthetic Motor Oil

API Service SN (Resource Conserving), SM... • ILSAC GF-5, 4... • GM dexos1™

STOCK#	UNITS	PKG./SIZE	WT.LBS.	COST
ASLQTC	EA	(1) 946-ml Bottle	2.0	13.50
ASLQTC	CA	(12) 946-ml Bottles	24.0	160.80
ASL1G	EA	(1) 3.78-litre Bottle	7.6	52.85
ASL1G	CA	(4) 3.78-litre Bottles	30.4	209.80

* Fortified with detergents that exceed dexos1™ sulfated ash specifications

Signature Series 10W-30 Synthetic Motor Oil

API Service SN (Resource Conserving), SM... • ILSAC GF-5, 4...

STOCK#	UNITS	PKG./SIZE	WT.LBS.	COST
ATMQTC	EA	(1) 946-ml Bottle	2.1	13.50
ATMQTC	CA	(12) 946-ml Bottles	25.2	160.80
ATM1G	EA	(1) 3.78-litre Bottle	7.9	52.85
ATM1G	CA	(4) 3.78-litre Bottles	31.6	209.80

Signature Series 0W-40 Synthetic Motor Oil

API Service SN, SM... • Chrysler MS-12633, MS-10725, MS-10850 • Nissan GT-R®

STOCK#	UNITS	PKG./SIZE	WT.LBS.	COST
AZFQT	EA	(1) 946-ml Bottle	2.1	14.05
AZFQT	CA	(12) 946-ml Bottles	25.2	167.40

Signature Series 5W-50 Synthetic Motor Oil

API Service SN, SM... • Ford WSS-M2C931-C (Mustang)

STOCK#	UNITS	PKG./SIZE	WT.LBS.	COST
AMRQT	EA	(1) 946-ml Bottle	2.1	14.05
AMRQT	CA	(12) 946-ml Bottles	25.2	167.40



AMSOIL Ea® Oil Filters
See page 34.



Delivering extra engine protection and performance with the convenience of twice-per-year oil changes.



Formulated to last longer in service than conventional motor oils. Extended-drain boost technology maintains maximum wear protection for up to 16,000-kilometer/six-month drain intervals, or longer when recommended in owners' manuals or indicated by oil life monitoring systems. Save time, money and effort.

XL 0W-20 Synthetic Motor Oil

API Service SN, SM... • ILSAC GF-5, 4... • GM dexos1™

STOCK#	UNITS	PKG./SIZE	WT.LBS.	COST
XLZQTC	EA	(1) 946-ml Bottle	2.0	10.15
XLZQTC	CA	(12) 946-ml Bottles	24.0	120.60
XLZ1G	EA	(1) 3.78-litre Bottle	7.8	39.40
XLZ1G	CA	(4) 3.78-litre Bottles	31.2	156.00

XL 5W-20 Synthetic Motor Oil

API Service SN, SM... • ILSAC GF-5, 4... • GM dexos1™

STOCK#	UNITS	PKG./SIZE	WT.LBS.	COST
XLMQTC	EA	(1) 946-ml Bottle	2.0	10.15
XLMQTC	CA	(12) 946-ml Bottles	24.0	120.60
XL1G	EA	(1) 3.78-litre Bottle	7.8	39.40
XL1G	CA	(4) 3.78-litre Bottles	31.2	156.00

XL 5W-30 Synthetic Motor Oil

API Service SN, SM... • ILSAC GF-5, 4... • GM dexos1™

STOCK#	UNITS	PKG./SIZE	WT.LBS.	COST
XLFQTC	EA	(1) 946-ml Bottle	2.0	10.15
XLFQTC	CA	(12) 946-ml Bottles	24.0	120.60
XL1G	EA	(1) 3.78-litre Bottle	7.8	39.40
XL1G	CA	(4) 3.78-litre Bottles	31.2	156.00

XL 10W-30 Synthetic Motor Oil

API Service SN, SM... • ILSAC GF-5, 4...

STOCK#	UNITS	PKG./SIZE	WT.LBS.	COST
XLTQTC	EA	(1) 946-ml Bottle	2.1	10.15
XLTQTC	CA	(12) 946-ml Bottles	25.2	120.60
XLT1G	EA	(1) 3.78-litre Bottle	7.8	39.40
XLT1G	CA	(4) 3.78-litre Bottles	31.2	156.00

XL 10W-40 Synthetic Motor Oil

API Service SN, SM...

STOCK#	UNITS	PKG./SIZE	WT.LBS.	COST
XLOQTC	EA	(1) 946-ml Bottle	2.0	10.15
XLOQTC	CA	(12) 946-ml Bottles	24.0	120.60
XLO1G	EA	(1) 3.78-litre Bottle	7.8	39.40
XLO1G	CA	(4) 3.78-litre Bottles	31.2	156.00

* Fortified with detergents that exceed dexos1™ sulfated ash specifications

All trademarked images are the property of their respective owners and may be registered marks in some countries. No affiliation or endorsement claim, express or implied, is made by their use. All products advertised here are AMSOIL-engineered for use in the applications shown.



Delivering excellent engine protection and performance for vehicle manufacturer-recommended oil change intervals.



Specially formulated for the longer oil change intervals recommended by vehicle manufacturers today. Advanced synthetic technology resists chemical breakdown for maximum wear protection (and peace of mind) well beyond the traditional 5,000-kilometer oil change interval.

OE 0W-20 Synthetic Motor Oil

API Service SN, SM... • ILSAC GF-5, 4... • GM dexos1™

STOCK#	UNITS	PKG./SIZE	WT.LBS.	COST
OEZQTC	EA	(1) 946-ml Bottle	2.0	8.15
OEZQTC	CA	(12) 946-ml Bottles	24.0	96.60
OEZ1G	EA	(1) 3.78-litre Bottle	8.0	31.75
OEZ1G	CA	(4) 3.78-litre Bottles	32.0	125.40

OE 5W-20 Synthetic Motor Oil

API Service SN, SM... • ILSAC GF-5, 4... • GM dexos1™

STOCK#	UNITS	PKG./SIZE	WT.LBS.	COST
OEMQTC	EA	(1) 946-ml Bottle	2.0	8.15
OEMQTC	CA	(12) 946-ml Bottles	24.0	96.60
OEM1G	EA	(1) 3.78-litre Bottle	7.8	31.75
OEM1G	CA	(4) 3.78-litre Bottles	31.2	125.40

OE 5W-30 Synthetic Motor Oil

API Service SN, SM... • ILSAC GF-5, 4..., GM dexos1™

STOCK#	UNITS	PKG./SIZE	WT.LBS.	COST
OEFQTC	EA	(1) 946-ml Bottle	2.0	8.15
OEFQTC	CA	(12) 946-ml Bottles	24.0	96.60
OEF1G	EA	(1) 3.78-litre Bottle	7.8	31.75
OEF1G	CA	(4) 3.78-litre Bottles	31.2	125.40

OE 10W-30 Synthetic Motor Oil

API Service SN, SM... • ILSAC GF-5, 4...

STOCK#	UNITS	PKG./SIZE	WT.LBS.	COST
OETQTC	EA	(1) 946-ml Bottle	2.0	8.15
OETQTC	CA	(12) 946-ml Bottles	24.0	96.60

Tough-to-reach fill hole?

Order a flexible pour spout with your oil to make the job easier. Fits 946-ml and 3.78-litre bottles.

STOCK#	COST
G1230	1.00



PREMIUM PROTECTION FOR EUROPEAN VEHICLES

SAPS stands for sulfated ash, phosphorus and sulfur, which comprise a significant part of a motor oil's additive content. Because the vehicle emissions systems and aftertreatment devices of some European vehicles are sensitive to the SAPS content of oil, it is important to use an oil that meets the proper specification to ensure optimum engine protection and performance.



European Car Formula Synthetic Motor Oil

Specially formulated for the lubrication needs of European gasoline and diesel cars and light trucks. Blended with advanced AMSOIL synthetic base oils, premium additives and broad viscosity ratings, allowing motorists to take advantage of the maximum extended drain intervals recommended by European automakers while providing outstanding protection and performance.

**Designed for the specific demands
of European gas and diesel engines.**

- Outstanding All-Season Performance
- Engineered for Maximum Fuel Economy
- Enhanced Turbocharger Protection
- Low-, Mid- and Full-SAPS Formulations

EUROPEAN CAR FORMULA



European Car Formula 5W-30 Low-SAPS Synthetic Motor Oil

VW 504.00/507.00 • MB 229.51 • BMW LL-04 •
Porsche C30

STOCK#	UNITS	PKG./SIZE	WT.LBS.	COST
AELQT	EA	(1) 946-ml Bottle	2.1	14.60
AELQT	CA	(12) 946-ml Bottles	25.2	174.00
AEL5L	EA	(1) 5 Litre	11.1	76.85
AEL5L	CA	(2) 5 Litres	22.2	153.10

European Car Formula 5W-40 Mid-SAPS Synthetic Motor Oil

ACEA C3 • API CF, SN, SM... • BMW Longlife-04 • Chrysler
MS-10850 (supersedes MS-10896) • Ford WSS-M2C917-A
• GM dexos2™ (supersedes LL-A-025 and LL-B-025) •
MB-Approval 229.51 • Porsche A40 • VW 502.00/505.01 •
Renault RNO700/RNO710

STOCK#	UNITS	PKG./SIZE	WT.LBS.	COST
AFLQT	EA	(1) 946-ml Bottle	2.1	13.50
AFLQT	CA	(12) 946-ml Bottles	25.2	160.80
AFL5L	EA	(1) 5 Litre	11.1	70.95
AFL5L	CA	(2) 5 Litres	22.2	141.30

European Car Formula 0W-40 Full-SAPS Synthetic Motor Oil

ACEA A3/B3, A3/B4 • API SN/SM... • BMW LL-01 • MB
229.3/229.5 • Porsche A40 • Renault 0710, 0700 • VW
502.00/505.00

STOCK#	UNITS	PKG./SIZE	WT.LBS.	COST
EFOQT	EA	(1) 946-ml Bottle	2.1	12.50
EFOQT	CA	(12) 946-ml Bottles	25.2	148.80

European Car Formula 5W-40 Full-SAPS Synthetic Motor Oil

ACEA A3/B3, A3/B4 • API SN/SM... • BMW LL-01 • MB
229.3/229.5 • Porsche A40 • Renault 0710, 0700 •
VW 502.00/505.00

STOCK#	UNITS	PKG./SIZE	WT.LBS.	COST
EFMQT	EA	(1) 946-ml Bottle	2.1	9.85
EFMQT	CA	(12) 946-ml Bottles	25.2	117.00
EFM5L	EA	(1) 5 Litre	11.1	51.80
EFM5L	CA	(2) 5 Litres	22.2	103.00

BUILD IT.

CRUISE IT.



Assembly Lube

Formulated to cling to engine parts and provide exceptional wear protection while inhibiting rust and corrosion in newly built or rebuilt four-stroke engines. Designed to dissolve in oil, helping eliminate oil port clogging and deposit formation.

STOCK#	UNITS	PKG./SIZE	WT.LBS.	COST
EALTB	EA	(1) 118-ml Tube	0.3	10.70
EALTB	CA	(12) 118-ml Tubes	3.6	127.20

Break-In Oil

Formulated without friction modifiers to allow for quick and efficient piston ring seating in new and rebuilt high-performance and racing engines. Contains anti-wear additives to protect cam lobes, lifters and rockers during the critical break-in period when wear rates are highest, while increased film strength protects rod and main bearings from damage.

STOCK#	UNITS	PKG./SIZE	WT.LBS.	COST
BRKQT	EA	(1) 946-ml Bottle	2.1	9.50
BRKQT	CA	(12) 946-ml Bottles	25.2	112.80

Z-ROD® Synthetic Motor Oil

High-zinc, high-phosphorus formulation engineered specifically for classic cars and performance vehicles. Provides extra protection for flat-tappet cams, lifters, rockers and other areas susceptible to wear. Unique blend of rust and corrosion inhibitors ensures maximum protection during long-term storage.

Z-ROD 10W-30 Synthetic Motor Oil

API SL, SJ...

STOCK#	UNITS	PKG./SIZE	WT.LBS.	COST
ZRTQT	EA	(1) 946-ml Bottle	2.1	13.00
ZRTQT	CA	(12) 946-ml Bottles	25.2	154.80

Z-ROD 20W-50 Synthetic Motor Oil

API SL, SJ...

STOCK#	UNITS	PKG./SIZE	WT.LBS.	COST
ZRFQT	EA	(1) 946-ml Bottle	2.1	13.55
ZRFQT	CA	(12) 946-ml Bottles	25.2	161.40

RACE IT.



**PRODUCTS THE
PROS USE**



"It's not uncommon for us to see engine temps over 300°. There's no other oil I'd trust on race day."

Scott Douglas
11 World Championships

DOMINATOR® Synthetic Racing Oil

Provides superior protection and performance for high-rpm, high-temperature racing and high-performance applications. Shear-stable formulation to protect critical engine components for the duration of the race. Effectively reduces friction for maximum power and cooler engine temperatures, resulting in improved lap times and longer-lasting equipment.

DOMINATOR 5W-20 Synthetic Racing Oil

STOCK#	UNITS	PKG./SIZE	WT.LBS.	COST
RD20QT	EA	(1) 946-ml Bottle	2.0	15.65
RD20QT	CA	(12) 946-ml Bottles	24.0	186.60

DOMINATOR 10W-30 Synthetic Racing Oil

STOCK#	UNITS	PKG./SIZE	WT.LBS.	COST
RD30QT	EA	(1) 946-ml Bottle	2.0	15.75
RD30QT	CA	(12) 946-ml Bottles	24.0	187.80

DOMINATOR 15W-50 Synthetic Racing Oil

STOCK#	UNITS	PKG./SIZE	WT.LBS.	COST
RD50QT	EA	(1) 946-ml Bottle	2.1	16.55
RD50QT	CA	(12) 946-ml Bottles	25.2	197.40
RD501G	EA	(1) 3.78-litre Bottle	8.0	65.00
RD501G	CA	(4) 3.78-litre Bottles	32.0	258.40

DOMINATOR SAE 60 Synthetic Racing Oil

STOCK#	UNITS	PKG./SIZE	WT.LBS.	COST
RD60QT	EA	(1) 946-ml Bottle	2.1	17.10
RD60QT	CA	(12) 946-ml Bottles	25.2	204.00



TO ORDER – Call 1-800-956-5695, 7 a.m. to 7 p.m. Central Time, M – F

AMO



ARO



AFF



ASE



Premium Protection Synthetic Motor Oil

Formulated for use in gasoline engines and on- and off-road diesel engines not equipped with diesel particulate filters (DPFs). Offers excellent wear protection. Ideal for applications where the extra protection of a high-zinc formula is desired, including classic cars and motor homes. Excellent for flat-tappet, high-performance, heavy-duty and high-mileage applications.

Premium Protection 10W-40 Synthetic Motor Oil

API CI-4+/CI-4/ CH-4/ CF/ CF-2/ SL/ SJ/ SH/ SG · ISO-L-EMA · Caterpillar ECF-1 · JASO MA (Motorcycle) · MAN 271/3275 · MTU Type 2 · Cummins 20071/20072/20076/20077 · Volvo, VDS-2, VDS · Mack EO-M+, EO-M · ACEA A3/ B3/ E3/ E5 · MB 228.1, 228.3, 229.1 · Detroit Diesel 93K214

STOCK#	UNITS	PKG./SIZE	WT.LBS.	COST
AM00TC	EA	(1) 946-ml Bottle	2.1	13.40
AM00TC	CA	(12) 946-ml Bottles	25.2	159.60
AM01G	EA	(1) 3.78-litre Bottle	8.0	52.40
AM01G	CA	(4) 3.78-litre Bottles	32.0	208.00

Premium Protection 20W-50 Synthetic Motor Oil

API CI-4+/CI-4/ CH-4/ CF/ CF-2/ SL/ SJ/ SH/ SG · ISO-L-EMA · Caterpillar ECF-1 · JASO MA (Motorcycle) · MAN 271/3275 · MTU Type 2 · Cummins 20071/20072/20076/20077 · Volvo, VDS-2, VDS · Mack EO-M+, EO-M · ACEA A3/ B3/ E3/ E5 · MB 228.1, 228.3, 229.1 · Detroit Diesel 93K214

STOCK#	UNITS	PKG./SIZE	WT.LBS.	COST
ARO0TC	EA	(1) 946-ml Bottle	2.1	13.55
ARO0TC	CA	(12) 946-ml Bottles	25.2	161.40
ARO1G	EA	(1) 3.78-litre Bottle	8.1	53.00
ARO1G	CA	(4) 3.78-litre Bottles	32.4	210.40

Formula 4-Stroke® Power Sports Synthetic Motor Oil

Specially formulated to provide serious protection and performance in recreational four-stroke motors, including ATVs and snowmobiles. Broad 0W-40 viscosity rating provides superior protection in both hot and cold temperature extremes.

SAE 0W-40 • API Service SG, SJ, SL/CF • JASO MA/MA2 • ISO-L-EMA2

STOCK#	UNITS	PKG./SIZE	WT.LBS.	COST
AFF0TC	EA	(1) 946-ml Bottle	2.0	14.60
AFF0TC	CA	(12) 946-ml Bottles	24.0	174.00

Formula 4-Stroke® Synthetic Small Engine Oil

Provides superior protection in the hot-temperature, severe-service operating conditions of both gasoline- and diesel-fueled small engines. Exceeds both 10W-30 multi-grade and SAE 30 straight-grade viscosity requirements. Provides excellent all-season protection and performance. Meets the demands of homeowner, commercial and industrial applications, improving productivity and reducing maintenance costs through superior engine protection.

Riding and Push Lawnmowers • Snowblowers • Generators • Pumps • Welders • Skid-Steers • Compressors • and more

API SL, SJ, SH, SG • API CF, CD • JASO MA/MA2 • ISO-L-EMA2

STOCK#	UNITS	PKG./SIZE	WT.LBS.	COST
ASEQT	EA	(1) 946-ml Bottle	2.0	11.05
ASEQT	CA	(12) 946-ml Bottles	24.0	131.40

Formula 4-Stroke® Marine Synthetic Motor Oil

Formulated specifically for maximum wear protection in four-stroke gasoline-fueled engines used in marine applications. Certified to meet NMMA FC-W Catalyst Compatible performance specifications. Meets "Warranty Certified" status of engine manufacturers.

Formula 4-Stroke Marine 10W-30 Synthetic Motor Oil

API SM • NMMA FC-W Catalyst Compatible (Registration #FC-00358P) • JASO MA

STOCK#	UNITS	PKG./SIZE	WT. LBS.	COST
WCTQT	EA	(1) 946-ml Bottle	2.0	13.40
WCTQT	CA	(12) 946-ml Bottles	24.0	159.60

Formula 4-Stroke Marine 10W-40 Synthetic Motor Oil

API SM • NMMA FC-W Catalyst Compatible (Registration #FC-00357P) • JASO MA

STOCK#	UNITS	PKG./SIZE	WT. LBS.	COST
WCFQT	EA	(1) 946-ml Bottle	2.0	14.40
WCFQT	CA	(12) 946-ml Bottles	24.0	171.60



- Outboard
- Inboard
- Inboard/Outboard (I/O)
- Personal Watercraft



Formula 4-Stroke® Synthetic Scooter Oil

Formulated to meet the special needs of today's high-tech air- and water-cooled four-stroke motorized scooters, offering advanced wear protection and friction reduction for longer equipment life and cooler operating temperatures. Friction modifier-free formulation ensures wet-clutch compatibility and smooth clutch operation. Special anti-corrosion additive package provides long-term protection during periods of inactivity and storage.

API SG, SL/CF • JASO MA/MA2 • ISO-L-EMA2

STOCK#	UNITS	PKG./SIZE	WT. LBS.	COST
ASOQT	EA	(1) 946-ml Bottle	2.0	11.00
ASOQT	CA	(12) 946-ml Bottles	24.0	130.80



AUV40



AUV50



AUDT



AUFD



SYNTHETIC ATV/UTV OILS

Formulated to deliver upgraded performance for hard-working, hard-riden ATVs and UTVs. Outstanding severe-service performance allows riders to confidently and safely push their machines to the limit.

10W-40 Synthetic ATV/UTV Engine Oil

Engineered for use in ATVs and UTVs that require 10W-40 motor oil, including those made by Kawasaki*, Suzuki*, Can-Am*, Honda*, Yamaha*, Kubota* and John Deere*. Protects hot, high-revving engines against wear for worry-free operation.

STOCK#	UNITS	PKG./SIZE	WT. LBS.	COST
AUV40QT	EA	(1) 946-ml Bottle	2.0	15.70
AUV40QT	CA	(12) 946-ml Bottles	24.0	187.20

5W-50 Synthetic ATV/UTV Engine Oil

Engineered for use in ATVs and UTVs that require 5W-50 motor oil, including the Polaris* Ranger*, RZR* and Sportsman*. Protects hot, high-revving engines against wear for worry-free operation.

STOCK#	UNITS	PKG./SIZE	WT. LBS.	COST
AUV50QT	EA	(1) 946-ml Bottle	2.0	16.55
AUV50QT	CA	(12) 946-ml Bottles	24.0	197.40

Synthetic ATV/UTV Transmission and Differential Fluid

Engineered for use in ATV and UTV transmissions and front and rear differentials. Boasts outstanding shear stability and resists extreme pressures. Protects heavily loaded, high-torque gears and bearings against wear for worry-free operation.

STOCK#	UNITS	PKG./SIZE	WT. LBS.	COST
AUDTQT	EA	(1) 946-ml Bottle	2.0	16.70
AUDTQT	CA	(12) 946-ml Bottles	24.0	199.20

Synthetic ATV/UTV Front Drive Fluid

Engineered for use in ATV and UTV front differentials and hubs, including those made by Polaris and Hilliard*. High-quality alternative to Polaris Demand Drive Fluid*. Boasts outstanding shear stability and resists extreme pressures. Protects heavily loaded, high-torque gears and bearings against wear for worry-free operation.

STOCK#	UNITS	PKG./SIZE	WT. LBS.	COST
AUFDQT	EA	(1) 946-ml Bottle	2.0	17.20
AUFDQT	CA	(12) 946-ml Bottles	24.0	205.20

*All trademarked names and images are the property of their respective owners and may be registered marks in some countries. No affiliation or endorsement claim, express or implied, is made by their use. All products advertised here are AMSIL-engineered for use in the applications shown.

OUT-FRONT PERFORMANCE



MONSTER ENERGY
SUPERCROSS
FIM World Championship



DB40



DB50



DB60

SYNTHETIC DIRT BIKE OILS

Friction-modifier-free formulation delivers confidence in clutch feel. Wet-clutch compatible. Advanced synthetic technology for maximum horsepower and wear protection. Superior film strength to protect high-torque transmissions.

10W-40 Synthetic Dirt Bike Oil

JASO MA · API SG, SJ, SH, SL

Engineered for use in dirt bikes that require 10W-40 motorcycle oil, including those made by Honda*, Yamaha*, Kawasaki*, Suzuki* and Husqvarna*. Recommended for separate-sump applications, including the Honda CRF and many two-stroke dirt bikes.

STOCK#	UNITS	PKG./SIZE	WT. LBS.	COST
DB40QT	EA	(1) 946-ml Bottle	2.0	16.50
DB40QT	CA	(12) 946-ml Bottles	24.0	196.80

10W-50 Synthetic Dirt Bike Oil

JASO MA · API SG, SJ, SH, SL

Engineered for use in dirt bikes that require 10W-50 motorcycle oil, including those made by KTM*, Kawasaki, Yamaha, Suzuki and Husqvarna.

STOCK#	UNITS	PKG./SIZE	WT. LBS.	COST
DB50QT	EA	(1) 946-ml Bottle	2.0	17.05
DB50QT	CA	(12) 946-ml Bottles	24.0	203.40

10W-60 Synthetic Dirt Bike Oil

JASO MA · API SG, SJ, SH, SL

Engineered for use in dirt bikes that require 10W-60 motorcycle oil, including those made by KTM and Husqvarna.

STOCK#	UNITS	PKG./SIZE	WT. LBS.	COST
DB60QT	EA	(1) 946-ml Bottle	2.0	17.50
DB60QT	CA	(12) 946-ml Bottles	24.0	208.80

RIDE HARD.



20W-50 Synthetic Motorcycle Oil

API Service SG, SL/CF, CG-4 • JASO MA/MA2
(motorcycle wet clutch) • ISO-L-EMA2

Engineered for use in motorcycles that require 20W-50 motorcycle oil, including those made by Harley-Davidson*, Buell*, Ducati*, Aprilia*, BMW* and Triumph*. Superior synthetic formulation provides long service life and maximum protection against engine wear. Superior shear stability provides outstanding protection for high-performance engines, transmissions and primary chaincases. No friction modifiers. Wet-clutch compatible.

STOCK #	UNITS	PKG./SIZE	WT. LBS.	COST
MCVQTC	EA	(1) 946-ml Bottle	2.1	15.80
MCVQTC	CA	(12) 946-ml Bottles	25.2	188.40
MCV1G	EA	(1) 3.78-litre Bottle	8.0	62.05
MCV1G	CA	(4) 3.78-litre Bottles	32.0	246.60

SAE 60 Synthetic Motorcycle Oil

API Service SG, SL/CF, GL-1 • JASO MA/MA2
(motorcycle wet clutch) • ISO-L-EMA2

Engineered for use in big-bore motorcycles that require a 60-weight oil, including those made by Harley-Davidson. Superior synthetic formulation provides long service life and maximum protection against engine wear. Superior shear stability provides outstanding protection for high-performance engines and transmissions. No friction modifiers. Wet-clutch compatible.

STOCK #	UNITS	PKG./SIZE	WT. LBS.	COST
MCSQT	EA	(1) 946-ml Bottle	2.0	16.20
MCSQT	CA	(12) 946-ml Bottles	24.0	193.20

20W-40 Synthetic V-Twin Motorcycle Oil

API SM • JASO MA

Engineered for use in motorcycles that require 20W-40 motorcycle oil, including those made by Victory* and Indian*. Superior synthetic formulation provides long service life and maximum protection against engine wear. Superior shear stability provides outstanding protection for high-performance engines and transmissions. Wet-clutch compatible. First full-synthetic alternative to manufacturer-branded semi-synthetic oils.

STOCK#	UNITS	PKG./SIZE	WT.LBS.	COST
MVIQT	EA	(1) 946-ml Bottle	2.1	15.35
MVIQT	CA	(12) 946-ml Bottles	24.9	183.00

*All trademarked names and images are the property of their respective owners and may be registered marks in some countries. No affiliation or endorsement claim, express or implied, is made by their use. All products advertised here are AMSOIL-engineered for use in the applications shown.

RUN COOL.®



MVT



MVP



Synthetic V-Twin Transmission Fluid

Purpose-built for bikers who prefer a dedicated transmission fluid over a multi-purpose lubricant. Durable formulation and extreme-pressure additives protect against gear and bearing wear. Finely tuned viscosities and frictional properties provide smooth shifts, helping riders avoid missed shifts. Helps eliminate loud thunks and gear noise.

STOCK #	UNITS	PKG./SIZE	WT. LBS.	COST
MVTQT	EA	(1) 946-ml Bottle	2.1	17.40
MVTQT	CA	(12) 946-ml Bottles	25.2	207.60

Synthetic V-Twin Primary Fluid

Purpose-built for bikers who prefer a dedicated primary chaincase lubricant over a multi-purpose lubricant. Balanced additive system provides consistent clutch performance and feel. Helps riders easily find neutral and promotes smooth acceleration. Superior load-holding capacity helps prevent clutch slip for confident take-offs, helping riders avoid killing their engines. Heavy dose of anti-wear additives protects the gears, chain and compensator bearing from wear. Resists thermal breakdown and reduces drag at low temperatures.

STOCK #	UNITS	PKG./SIZE	WT. LBS.	COST
MVPQT	EA	(1) 946-ml Bottle	2.1	15.40
MVPQT	CA	(12) 946-ml Bottles	25.2	183.60



MCF

10W-40 Synthetic Metric Motorcycle Oil

API Service SG, SL/CF • JASO MA/MA2 (motorcycle wet clutch) • ISO-L-EMA2

Engineered for use in motorcycles that require 10W-40 motorcycle oil, including those made by Honda*, Yamaha*, Kawasaki*, Triumph* and BMW*. Superior synthetic formulation provides long service life and maximum protection against engine wear. Superior shear stability provides outstanding protection for high-performance engines and transmissions. No friction modifiers. Wet-clutch compatible.

STOCK#	UNITS	PKG./SIZE	WT. LBS.	COST
MCFQTC	EA	(1) 946-ml Bottle	2.1	15.35
MCFQTC	CA	(12) 946-ml Bottles	25.2	183.00
MCF1G	EA	(1) 3.78-litre Bottle	8.0	60.25
MCF1G	CA	(4) 3.78-litre Bottles	32.0	239.40



MCT

10W-30 Synthetic Metric Motorcycle Oil

API Service SG, SL/CF, CG-4 • JASO MA/MA2 (motorcycle wet clutch)
• ISO-L-EMA2

Engineered for use in motorcycles that require 10W-30 motorcycle oil, including those made by Honda, Yamaha, Suzuki* and Kawasaki. Superior synthetic formulation provides long service life and maximum protection against engine wear. Superior shear stability delivers outstanding protection for high-performance engines and transmissions. No friction modifiers. Wet-clutch compatible.

STOCK#	UNITS	PKG./SIZE	WT. LBS.	COST
MCTQT	EA	(1) 946-ml Bottle	2.0	14.90
MCTQT	CA	(12) 946-ml Bottles	24.0	177.60

*All trademarked names and images are the property of their respective owners and may be registered marks in some countries. No affiliation or endorsement claim, express or implied, is made by their use. All products advertised here are AMSOIL-engineered for use in the applications shown.



HP Marine™ Synthetic 2-Stroke Oil

Excellent for all two-stroke outboard motors, personal watercraft and anywhere NMMA TC-W3 and API-TC oils are specified. Engineered for use in Evinrude® E-TEC® engines using factory-lean setting. Engineered with custom-designed synthetic base stocks to reduce friction and wear. Fortified with MAXDOSE™ system of advanced additives for “super-clean” operation. Low smoke, low odor, low aquatic toxicity. Injector use or 50:1 pre-mix.

TC-W3 / API TC

STOCK#	UNITS	PKG./SIZE	WT. LBS.	COST
HPMQTC	EA	(1) 946-ml Bottle	2.0	11.85
HPMQTC	CA	(12) 946-ml Bottles	24.0	141.00
HPM1GC	EA	(1) 3.78-litre Bottle	7.9	46.20
HPM1GC	CA	(4) 3.78-litre Bottles	31.6	183.20

INTERCEPTOR® Synthetic 2-Stroke Oil

Engineered specifically for two-stroke snowmobiles. Anti-scuff/anti-wear formulation provides excellent lubricity and cleanliness properties. Prevents piston skirt scuffing, ring sticking and exhaust power valve sticking. Low-smoke, low-odor formulation ensures riders are not “smoked out.” Injector use or 50:1 pre-mix.

API TC

STOCK#	UNITS	PKG./SIZE	WT. LBS.	COST
AITQTC	EA	(1) 946-ml Bottle	2.1	13.45
AITQTC	CA	(12) 946-ml Bottles	25.2	160.20
AIT1GC	EA	(1) 3.78-litre Bottle	8.2	52.75
AIT1GC	CA	(4) 3.78-litre Bottles	32.8	209.40



Meets the performance requirements of Polaris®, Arctic Cat® and Ski-Doo® two-stroke snowmobiles.

Severe-Duty Dyno Results

INTERCEPTOR® Synthetic 2-Stroke Oil was installed in a 2012 Ski-Doo® Renegade X snowmobile equipped with a Rotax® E-TEC® 800R engine. Following a 50-hour severe-duty dyno session designed to simulate a full season of real-world conditions, the engine was disassembled and rated for wear and deposits by a calibrated ASTM rater. Results prove INTERCEPTOR virtually eliminated wear and deposits throughout the entire engine.

The piston rings earned perfect 10 merit ratings, demonstrating no ring sticking and excellent performance.

The piston skirts exhibited 0.00% scuffing, proving INTERCEPTOR's outstanding friction-reduction capabilities.

Complete results at amsoil.com/proof

EXHAUST SIDE

Piston coating largely intact.



DOMINATOR® Synthetic 2-Stroke Racing Oil

Complex formulation specially engineered to address the heat, pressure and friction of race-engineered two-stroke engines, both on and off the track. Purpose-built for outstanding film strength and lubricity. Anti-friction, anti-scuff formula for maximum power and exceptional piston protection.

API TC

STOCK#	UNITS	PKG./SIZE	WT. LBS.	COST
TDRQT	EA	(1) 946-ml Bottle	2.1	13.45
TDRQT	CA	(12) 946-ml Bottles	25.2	160.20
TDR1G	EA	(1) 3.78-litre Bottle	8.2	52.75
TDR1G	CA	(4) 3.78-litre Bottles	32.8	209.40

PRODUCTS THE PROS USE

"Ice oval racing is the most extreme test for a snowmobile engine, and DOMINATOR meets the challenge every time."

— P.J. Wanderscheid | 4X AMSOIL Eagle River World Champion



SABER® Professional Synthetic 2-Stroke Oil

Withstands high heat and stress to protect handheld power equipment engines against wear and harmful deposits. Smoke-free operation. Can be mixed at conventional mix ratios (32:1, 40:1, 50:1) or the SABER Ratio™ (80:1, 100:1), offering the convenience of one mix ratio for all applications.

ISO-L-EGD / API TC / JASO FD

STOCK#	UNITS	PKG./SIZE	WT. LBS.	COST
ATPBC	EA	(1) 236-ml Bottle	0.7	5.90
ATPBC	CA	(12) 236-ml Bottles	8.4	69.60
ATPPK	EA	(1) 44-ml Pillow Pack	0.1	1.95
ATPPK	CA	(48) 44-ml Pillow Packs	5.1	91.20
ATPQTC	EA	(1) 946-ml Bottle	2.1	14.75
ATPQTC	CA	(12) 946-ml Bottles	25.2	175.80
ATPBA	EA	(1) 103-ml Bottle	0.4	3.25
ATPBA	CA	(12) 103-ml Bottles	4.8	37.80
ATP1G	EA	(1) 3.78-litre Bottle	8.0	57.85
ATP1G	CA	(4) 3.78-litre Bottles	32.0	229.80

Outboard 100:1 Pre-Mix Synthetic 2-Stroke Oil

Contains lower-temperature dispersants for water-cooled outboard motors. Recommended for 100:1 mix ratios in normal service (1.3 oz. per gallon).

TC-W3

STOCK#	UNITS	PKG./SIZE	WT. LBS.	COST
ATOBC	EA	(1) 236-ml Bottle	0.7	6.25
ATOBC	CA	(12) 236-ml Bottles	8.4	73.80
ATOQT	EA	(1) 946-ml Bottle	2.2	16.10
ATOQT	CA	(12) 946-ml Bottles	26.4	192.00



AIO



Synthetic 2-Stroke Injector Oil

Offers the convenience of one formula for the tough conditions of all two-stroke recreational equipment requiring NMMA TC-W3 and API TC two-stroke oil. Effectively minimizes wear and deposits that can damage internal components and significantly shorten engine life. Provides cold-temperature fluidity for easy starts. Fortified with high-temperature detergent and dispersant additives to maintain engine cleanliness. Injector use or 50:1 pre-mix.

TC-W3 / API TC

STOCK#	UNITS	PKG./SIZE	WT. LBS.	COST
AIOQTC	EA	(1) 946-ml Bottle	2.0	10.30
AIOQTC	CA	(12) 946-ml Bottles	24.0	122.40
AIO1GC	EA	(1) 3.78-litre Bottle	7.9	40.40
AIO1GC	CA	(4) 3.78-litre Bottles	31.6	160.00

Synthetic Chaincase & Gear Oil

Provides superior protection and performance for enclosed chains. Ideal for snowmobiles, ATVs and general equipment. Extreme-pressure additives provide extra wear protection. Extends chain life, repels water and inhibits rust, oxidation and foam. Superior low-temperature starting, performance and protection.

TCC



STOCK#	UNITS	PKG./SIZE	WT. LBS.	COST
TCCCN	EA	(1) 473-ml Bottle	1.3	11.90
TCCCN	CA	(6) 473-ml Bottles	7.8	70.80
TCC05	EA	(1) 18.9-litre Pail	32.4	250.40

Shock Therapy® Suspension Fluid

Formulated for maximum stability and performance in high-performance fork and shock applications. Effectively controls friction and heat and significantly reduces wear and scuffing. Viscosity remains constant and foam and aeration are kept to a minimum, limiting shock fade and inconsistent dampening. Offers superior performance in temperature extremes.

STL



STM



Shock Therapy Suspension Fluid

Lightweight #5

STOCK#	UNITS	PKG./SIZE	WT. LBS.	COST
STLQT	EA	(1) 946-ml Bottle	1.9	15.70
STLQT	CA	(12) 946-ml Bottles	22.8	187.20
STL05	EA	(1) 18.9-litre Pail	37.7	297.80

AMSOIL STL #5 is recommended for applications that demand quick rebounds under extreme temperatures.

Shock Therapy Suspension Fluid

Medium #10

STOCK#	UNITS	PKG./SIZE	WT. LBS.	COST
STMQT	EA	(1) 946-ml Bottle	2.1	15.40
STMQT	CA	(12) 946-ml Bottles	25.2	183.60
STM05	EA	(1) 18.9-litre Pail	38.1	292.00

AMSOIL STM #10 is recommended for applications that require more dampening and slower rebounds.

How to Order

TOLL-FREE TELEPHONE ORDERING

Dial 1-800-956-5695, 7 a.m. to 7 p.m. Central Time, Monday through Friday, except for U.S. statutory holidays. When calling, please provide your Referral Number (from the back cover of the catalog).

TECHNICAL QUESTIONS

Direct all technical questions to the AMSOIL Technical Services Department:
(715) 399-8324 • tech@amsoil.com

OIL FILTER, AIR FILTER OR FLUID CAPACITY QUESTIONS

Consult your owner's manual, the AMSOIL Online Application Guide at www.amsoil.com or contact AMSOIL Technical Services at tech@amsoil.com or 715-399-8324, 8 a.m. to 5 p.m. Central Time, M - F.

AMSOIL WARRANTY STATEMENT

The use of AMSOIL products will not cause mechanical damage to any mechanically sound equipment when AMSOIL products are used in full compliance with AMSOIL recommendations and instructions. For full warranty statement see www.amsoil.com/warranty.aspx.

SHIPPING AND HANDLING

All orders are precharged actual freight or you may request it to be shipped freight collect. UPS and Parcel Post shipments CANNOT be shipped "freight collect." Use the following shipping schedule for estimation purposes only. Depending on your location, some areas may be higher. Actual freight costs will be charged when each order is filled. Credit cards will not be processed until freight is calculated and added to each order.

Location	1-20 lbs.	21-40 lbs.	41-60 lbs.	61-80 lbs.	81-100 lbs.	101-249 lbs.	250-499 lbs.	500-999 lbs.	1000+ lbs.
Toronto*	\$6.65	\$8.08	\$9.50	\$10.45	\$12.35	\$0.12	\$0.16	\$0.12	\$0.05
ON (Non-Toronto)	\$11.40	\$15.20	\$18.05	\$21.85	\$25.65	\$0.26	\$0.16	\$0.12	\$0.05
QC	\$10.45	\$15.20	\$18.05	\$21.85	\$25.65	\$0.26	\$0.17	\$0.17	\$0.09
NB	\$10.45	\$15.20	\$18.05	\$21.85	\$25.65	\$0.26	\$0.22	\$0.15	\$0.11
PE	\$10.45	\$15.20	\$18.05	\$21.85	\$25.65	\$0.26	\$0.24	\$0.20	\$0.16
NF	\$10.45	\$15.20	\$18.05	\$21.85	\$25.65	\$0.26	\$0.24	\$0.20	\$0.14
AB	\$8.55	\$11.40	\$15.20	\$19.00	\$22.80	\$0.22	\$0.20	\$0.17	\$0.13
SK	\$9.50	\$14.25	\$19.95	\$24.70	\$31.35	\$0.29	\$0.20	\$0.15	\$0.11
MB	\$11.40	\$18.05	\$20.90	\$25.65	\$32.30	\$0.30	\$0.26	\$0.22	\$0.14
NS	\$11.40	\$15.20	\$18.05	\$20.90	\$23.75	\$0.24	\$0.19	\$0.17	\$0.14
BC	\$10.45	\$16.15	\$19.95	\$24.70	\$28.50	\$0.28	\$0.18	\$0.16	\$0.13
NT	\$17.10	\$19.95	\$21.85	\$24.70	\$27.55	\$0.28	\$0.26	\$0.22	\$0.14
YT	\$17.10	\$19.95	\$21.85	\$24.70	\$27.55	\$0.28	\$0.35	\$0.33	\$0.28
NU	\$17.10	\$19.95	\$21.85	\$24.70	\$27.55	\$0.28	CALL FOR QUOTE		

NOTE: In-stock items are typically delivered within five business days. 1. In the Northwest Territories and Yukon, actual rates vary to outlying areas; 2. In some cases, there are "beyond point" charges; 3. Liquids cannot be shipped by Parcel Post

* Greater Toronto Area

PRODUCT DAMAGED DURING SHIPPING

If there is visible damage to your order upon delivery, refuse the order. It will be returned to AMSOIL INC. for inspection and a new order will be sent at no extra charge to you. If you discover hidden damage after accepting delivery of your order, call 1-800-956-5695 for damaged product instructions.

SALES TAX INFORMATION

AMSOIL INC. has an established sales tax rate for each province.

NOTE: A General Sales Tax (GST) of 5% will be charged on all Canadian purchases. Only provincial governments are exempt. GST will be charged on the purchase price and the freight costs. In the provinces of Quebec, Prince Edward Island and New Brunswick the provincial sales tax will be charged on the GST. Freight charges are subject to sales tax on all orders.

RETURN/EXCHANGES

Call 1-800-956-5695 for return guidelines and instructions.

QUESTIONS

For questions on shipping, sales tax, damaged products, instructions, etc., call (715) 392-7101, 8 a.m. to 5 p.m. Central Time, M - F, except for U.S. statutory holidays.

Prices subject to change without notice.

Preferred Customer Program – Start buying wholesale today

Fifteen dollars gets you a six-month trial Preferred Customer membership for buying AMSOIL products at wholesale prices. Here's what Preferred Customers get:

- Preferred Customers buy AMSOIL products at wholesale prices.
- Preferred Customers can register over the telephone (1-800-777-7094). Have the referral number from back page ready when calling (if one is listed).
- Preferred Customers may change their memberships to become AMSOIL Dealers at any time.
- Preferred Customers receive a kit with information on more AMSOIL products and package sizes, and the monthly AMSOIL product, racing and application publication, *AMSOIL Magazine*.



Want More? Become an AMSOIL Dealer

AMSOIL products are sold through independent Dealers.

People like you. People looking for a full-time business or to earn extra money on a part-time basis.

You can start an independent AMSOIL Dealership for under \$50... and put as much – or as little – time into it as you want.

There's always plenty of support... never any hassles. No quotas to fill. No inventory requirements. You are your own boss. It's the ideal business opportunity.

You can sell to commercial and retail accounts as well as individuals. It's up to you... extra money, a full-time income or rock-bottom prices on AMSOIL products.

New customers call 1-800-956-5695 and order a free Dealer/Preferred Customer Information Packet for information on AMSOIL Preferred Customer and Dealership opportunities.

DELIVERING THE POWER OF SYNTHETICS



Lavon Miller,
2014 and 2015 Diesel Power
Challenge Champion



Premium Synthetic Diesel Oil

The premium choice for model-year 2007 and newer diesel engines requiring API CJ-4 emission quality oil standards. Also recommended for pre-2007 diesel engines. Incredibly shear-stable to withstand the stress of heat, soot and acids and help prevent deposits, wear and corrosion. Broad viscosity range offers superior protection over a wide temperature range. Effectively reduces emissions by resisting oil consumption, while improving fuel efficiency. Recommended for up to three times the original equipment manufacturer's drain interval recommendation in diesel applications, not to exceed 80,500 kilometers/600 hours or one year, whichever comes first.* Recommended for up to two times the original equipment manufacturer's drain interval recommendation in gasoline applications, not to exceed 24,000 kilometers or one year, whichever comes first. Compatible with all exhaust treatment devices and vehicles equipped with turbochargers. Designed to extend the service life of particulate filters.

**Due to fuel dilution issues, extended drain intervals are not recommended for 2007-2009 Caterpillar* C13 and C15 on-highway engines or 2007-present Dodge*, Ford* and GM* LMM light-duty diesel pickups. See OE Synthetic Diesel Oil on pg. 25.*

Premium 5W-40 Synthetic Diesel Oil

API licensed CJ-4, CI-4+, CF, SN, SM • ACEA E7, E9 • Mack EO-O • DDC 93K218 • Caterpillar ECF-3, ECF-2, ECF-1-a • Cummins CES 20081 • Volvo VDS-4, VDS-3 • MB 228.31 • MS 10902 • MTU Type I, II, 2.1 • MAN 3275, 3575 • JASO DH-2 • Global DHD-1 • Renault RLD-3 • Ford WSS-M2C171E

STOCK#	UNITS	PKG./SIZE	WT. LBS.	COST
DEOQT	EA	(1) 946-ml Bottle	2.1	13.40
DEOQT	CA	(12) 946-ml Bottles	25.2	159.60
DEO1G	EA	(1) 3.78-litre Bottle	8.0	52.45
DEO1G	CA	(4) 3.78-litre Bottles	32.0	208.20
DEOTP	EA	(1) 9.45-litre Bottle	19.5	127.50
DEOTP	CA	(2) 9.45-litre Bottles	39.0	253.00

Premium 15W-40 Synthetic Diesel Oil

API CJ-4, CI-4+, CF, SN, SM • ACEA E7, E9 • Mack EO-O • DDC 93K218 • Caterpillar ECF-3, ECF-2, ECF-1-a • Cummins CES 20081 • Volvo VDS-4, VDS-3 • MB 228.31 • MS 10902 • MTU Type I, II, 2.1 • MAN 3275, 3575 • JASO DH-2 • Global DHD-1 • Renault RLD-3

STOCK#	UNITS	PKG./SIZE	WT. LBS.	COST
DMEQT	EA	(1) 946-ml Bottle	2.1	13.15
DMEQT	CA	(12) 946-ml Bottles	25.2	156.60
DME1G	EA	(1) 3.78-litre Bottle	8.0	51.40
DME1G	CA	(4) 3.78-litre Bottles	32.0	204.00
DMETP	EA	(1) 9.45-litre Bottle	19.5	124.80
DMETP	CA	(2) 9.45-litre Bottles	39.0	247.60

*All trademarked names and images are the property of their respective owners and may be registered marks in some countries. No affiliation or endorsement claim, express or implied, is made by their use. All products advertised here are AMSOIL-engineered for use in the applications shown.

OED



OEC



HDD

ADVANCED
FUEL EFFICIENT FORMULA

OE Synthetic Diesel Oil

Provides excellent protection and performance in both on- and off-road diesel engines for the original equipment manufacturer's recommended drain interval. Suitable for both modern and older diesel applications requiring API CJ-4 specifications. Exceeds the higher performance demands of modern engines and withstands the stress of heat, soot and acids to help prevent deposits, wear and corrosion.

OE 15W-40 Synthetic Diesel Oil

API licensed CJ-4, CI-4+, CF, SN, SM • ACEA E9-08, E7-08 • DDC 93K218 • Cummins CES 20081 • MB 228.31 • CAT ECF-3, ECF-2, ECF-1-a • Mack EO-O • Volvo VDS-4, VDS-3 • MAN 3275, 3575 • Renault RLD-3 • MTU Type I, II, 2.1

STOCK#	UNITS	PKG./SIZE	WT. LBS.	COST
OEDQT	EA	(1) 946-ml Bottle	2.1	9.10
OEDQT	CA	(12) 946-ml Bottles	25.2	108.00
OED1G	EA	(1) 3.78-litre Bottle	8.0	35.50
OED1G	CA	(4) 3.78-litre Bottles	32.0	140.40
OEDTP	EA	(1) 9.45-litre Bottle	19.5	85.70
OEDTP	CA	(2) 9.45-litre Bottles	39.0	169.40

OE 10W-30 Synthetic Diesel Oil

API licensed CJ-4, CI-4+, CF, SN, SM • ACEA E9-08, E7-08 • Cummins CES 20081 • MB 228.31 • CAT ECF-3, ECF-2, ECF-1-a • Mack EO-O • Volvo VDS-4, VDS-3 • MAN 3275, 3575 • Renault RLD-3 • MTU Type I, II, 2.1

STOCK#	UNITS	PKG./SIZE	WT. LBS.	COST
OECQT	EA	(1) 946-ml Bottle	2.1	8.95
OECQT	CA	(12) 946-ml Bottles	25.2	106.20
OEC1G	EA	(1) 3.78-litre Bottle	8.0	35.05
OEC1G	CA	(4) 3.78-litre Bottles	32.0	138.60
OECTP	EA	(1) 9.45-litre Bottle	19.5	84.60
OECTP	CA	(2) 9.45-litre Bottles	39.0	167.20

Series 3000 5W-30 Synthetic Heavy Duty Diesel Oil

Engineered for on- and off-road diesel engines not equipped with diesel particulate filters (DPF). Also for all gasoline engines recommending API SL specifications, including turbocharged vehicles. Delivers better wear protection than other popular diesel oils and effectively reduces fuel consumption. Ideal for exhaust gas recirculating (EGR) engines. **Note:** For 2007 and newer on-road diesel vehicles, see Premium Synthetic Diesel Oil on pg. 24 and OE Synthetic Diesel Oil on pg. 25.

API CI-4+/CI-4/CH-4/CF/CF-2/SL/SJ • Global DHD-1 • ACEA A3/B3, E2, E3, E5, E7 • JASO DH-1 • Mack EO-M, EO-N • DDC 93K214 • Caterpillar ECF-1-a, ECF-2 • Cummins CES 20076, 20077, 20078 • Volvo VDS-3, VDS-2 • MB 228.1, 228.3, 229.1 • MAN 271, 3275 • MTU Type II

STOCK#	UNITS	PKG./SIZE	WT. LBS.	COST
HDDQTC	EA	(1) 946-ml Bottle	2.1	14.80
HDDQTC	CA	(12) 946-ml Bottles	25.2	176.40
HDD1G	EA	(1) 3.78-litre Bottle	8.0	58.00
HDD1G	CA	(4) 3.78-litre Bottles	32.0	230.40
HDDTP	EA	(1) 9.45-litre Bottle	19.6	141.10
HDDTP	CA	(2) 9.45-litre Bottles	39.2	280.20



15W-40 Synthetic Heavy Duty Diesel and Marine Oil

Engineered for on- and off-road diesel engines not equipped with diesel particulate filters (DPF). High 12 TBN controls acids from combustion blow-by and exhaust gas recirculation (EGR). High levels of detergency and dispersancy additives control soot thickening, oxidation and wear. Provides up to three times the original equipment manufacturer's drain interval recommendation in diesel applications, not to exceed 80,500 kilometers/600 hours or one year, whichever comes first. **Note:** For 2007 and newer on-road diesel vehicles, see Premium Synthetic Diesel Oil on pg. 24 and OE Synthetic Diesel Oil on pg. 25.

API CI-4+/CI-4/CH-4/CF/CF-2/SL/SJ • Global DHD-1 • ACEA A3/B3, E2, E3, E5, E7 • JASO DH-1 • Mack EO-M, EO-N • DDC 93K214 • Caterpillar ECF-1-a, ECF-2 • Cummins CES 20076, 20077, 20078 • Volvo VDS-3, VDS-2 • MB 228.1, 228.3, 229.1 • MAN 271, 3275 • MTU Type II

STOCK#	UNITS	PKG./SIZE	WT. LBS.	COST
AMEQTC	EA	(1) 946-ml Bottle	2.1	12.25
AMEQTC	CA	(12) 946-ml Bottles	25.2	145.80
AME1GC	EA	(1) 3.78-litre Bottle	8.0	47.90
AME1GC	CA	(4) 3.78-litre Bottles	32.0	190.00
AMETP	EA	(1) 9.45-litre Bottle	19.6	116.20
AMETP	CA	(2) 9.45-litre Bottles	39.2	230.40

10W-30/SAE 30 Synthetic Heavy Duty Diesel Oil

Exceeds both 10W-30 multi-grade and SAE 30 straight-grade viscosity requirements. Engineered for on- and off-road diesel engines not equipped with diesel particulate filters (DPF). Also recommended for gasoline engines requiring API SL or previous specifications. Excellent for heavy equipment and personal vehicles. Extends drain intervals. See the AMSOIL Product Information and Drain Interval Chart (G2281) for more information. **Note:** For 2007 and newer on-road diesel vehicles, see Premium Synthetic Diesel Oil on pg. 24 and OE Synthetic Diesel Oil on pg. 25.

API CI-4+/CH-4/CF-2/CF/SL • Global DHD-1 • ACEA A3/B3, E3, E5 • DDC 93K214 • Caterpillar ECF-1-a, ECF-2 • Cummins CES 20076, 20077, 20078 • Volvo VDS-3, VDS-2 • MB 228.1, 228.3, 229.1 • MAN 271, 3275 • MTU Type II • Ford WSS-M2C921-A • Mack EO-M, EO-N • JASO DH-1

STOCK#	UNITS	PKG./SIZE	WT. LBS.	COST
ACD1G	EA	(1) 3.78-litre Bottle	8.1	47.90
ACD1G	CA	(4) 3.78-litre Bottles	32.4	190.00



Oil Analysis

AMSOIL and its subsidiary OIL ANALYZERS INC.® provide state-of-the-art oil analysis service, allowing customers to monitor engine condition and maximize oil drain intervals. Customers receive detailed analysis reports via fax, email and online reporting. Expert consultation of oil condition is easily accessible by phone (877-458-3315) or email (info@oaitesting.com). Coolant and diesel fuel analysis is also available. For more information, see www.oaitesting.com.

STOCK#	PKG./SIZE	WT. LBS.	COST
KIT401	1 sample kit (UPS Paid)	0.1	62.00
G1206	Oil Suction Pump w/10-ft. hose	0.1	36.50
G1571	Replacement Hose 25-ft.	0.1	11.50

Oil Analyzers
INC.

Signature Series Synthetic Automatic Transmission Fluid

Provides reserve protection in fleet vehicles, heavy-duty pickups, work trucks and other severe-service applications that quickly break down other lubricants. Promotes maximum transmission performance and life by protecting against formation of harmful sludge in hot-running automatic transmissions. Retains viscosity in severe service to guard against wear to gears, clutch plates and other critical components. Outstanding cold-flow and frictional properties. Follow the vehicle manufacturer's normal-service drain interval in normal service or double the vehicle manufacturer's severe-service drain interval in severe service. Fuel-Efficient Synthetic Automatic Transmission Fluid is engineered to exceed the requirements of GM*, Ford*, Toyota* and other manufacturers where low-viscosity oil is required.

Handle More Heat With Confidence

Standard Severe Service

AMSOIL Severe Service

RESERVE PROTECTION

Change Interval—Miles



ATF



ATL

Signature Series Multi-Vehicle Synthetic Automatic Transmission Fluid

Ford MERCON® MERCON® V, ESP-M2C166-H • GM DEXRON® III • Chrysler ATF+4®, MOPAR® AS68RC • Allison C-4, TES-389 • Audi G 052 162, G 052 990, G 055 025 • BMW 7045E, LA 2634, LT 71141 • Honda ATF-Z1 (not CVT) • Hyundai SP-II and SP-III • Idemitsu K17 • JWS 3309, 3314, 3317 • Kia SP-II and SP-III, ATF Red-1 • MAN 339F, 339 V1, 339 V2, 339 Z1, Z2 & Z3 • Mazda ATF-M III, ATF-MV, ATF-FZ • Mercedes Benz 236.1, 236.2, 236.3, 236.5, 236.6, 236.7, 236.9, 236.10, 236.11, 236.81 • Mitsubishi SP-II and SP-III • Nissan Matic-D, Matic-J, Matic-K • Shell 3403, LA 2634 • Subaru ATF, ATF-HP • Suzuki 3314 & 3317 • Texaco ETL-7045E, ETL-8072B, N402 • Toyota Type T-III and T-IV • Voith 55.6335.XX (G607), 55.6336.XX (G1363) • Volvo 97340, 97341 • Volkswagen G 052 162, G 052 990, G 055 025 • ZF TE-ML 03D, 04D, 05L, 09, 11B, 14A, 14B, 14C, 16L, 17C • JASO 1-A

Note: Not for use with CVT or Ford Type F applications.

STOCK #	UNITS	PKG./SIZE	WT. LBS.	COST
ATFQTC	EA	(1) 946-ml Bottle	2.0	15.30
ATFQTC	CA	(12) 946-ml Bottles	24.0	182.40
ATF1G	EA	(1) 3.78-litre Bottle	7.9	60.00
ATF1G	CA	(4) 3.78-litre Bottles	31.6	238.40
ATFTP	EA	(1) 9.45-litre Bottle	19.3	146.00
ATFTP	CA	(2) 9.45-litre Bottles	38.6	290.00

Signature Series Fuel-Efficient Synthetic Automatic Transmission Fluid

Ford MERCON® LV, SP • GM DEXRON® VI • Aisin-Warner AW-1 • Audi G 055 005, G 055 162, G 060 162 • BMW 83 22 0 142 516, 83 22 2 152 426 • Honda DW-1® • Hyundai/Kia SP-IV, SPH-IV, SPH-IV-RR • JWS 3324 • Chrysler Mopar® PIN 68157995A (ZF 8 & 9 speed ATF) • Mitsubishi SP-IV, ATF J2 • Nissan Matic-S • Saab 93 165 147 • Shell M-1375.4, M-1375.5, M-1375.6, M-L 12108 • Toyota WS • Volkswagen G 055 005, G 055 162, G 060 162 • JASO 1-A • Mercedes Benz 236.12, 236.14 • Volvo 97342

Note: Not for use with CVT applications.

STOCK #	UNITS	PKG./SIZE	WT. LBS.	COST
ATLQTC	EA	(1) 946-ml Bottle	2.0	15.30
ATLQTC	CA	(12) 946-ml Bottles	24.0	182.40
ATL1G	EA	(1) 3.78-litre Bottle	7.9	60.00
ATL1G	CA	(4) 3.78-litre Bottles	31.6	238.40
ATLTP	EA	(1) 9.45-litre Bottle	19.5	146.00
ATLTP	CA	(2) 9.45-litre Bottles	39.0	290.00

*All trademarked names are the property of their respective owners and may be registered marks in some countries. No affiliation or endorsement claim, express or implied, is made by their use.

OE Synthetic Automatic Transmission Fluid

Provides outstanding protection for passenger-car/light-truck transmissions throughout original equipment manufacturer (OEM)-recommended drain intervals. Resists wear to the transmission's valve body, gears, clutch plates and other vital parts. Guards against the harmful effects of thermal breakdown, resisting varnish formation that can stick valves and threaten transmission performance and life. Resists thickening and flows quickly for fast, reliable shifts during cold starts and maximum fuel efficiency. OE Fuel-Efficient Synthetic Automatic Transmission Fluid is engineered to exceed the requirements of GM*, Ford*, Toyota* and other OEMs where low-viscosity oil is required.



OE Multi-Vehicle Synthetic Automatic Transmission Fluid

Ford MERCON®, MERCON® V, ESP-M2C166-H • GM DEXRON® III • Chrysler MOPAR® AS68RC • Allison C-4, TES-389 • Audi G 052 162, G 052 990, G 055 025 • BMW 7045E, LA 2634, LT 71141 • Honda ATF-Z1 (not CVT) • Hyundai SP-II and SP-III • Idemitsu K17 • JWS 3309, 3314, 3317 • Kia SP-II and SP-III, ATF Red-1 • MAN 339F, 339 V1, 339 V2, 339 Z1 & 339 Z2 • Mazda ATF-M III, ATF-MV, ATF-FZ • Mercedes Benz 236.1, 236.2, 236.3, 236.5, 236.6, 236.7, 236.9, 236.10, 236.11, 236.81 • Mitsubishi SP-II and SP-III • Nissan Matic-D, Matic-J, Matic-K • Shell 3403, LA 2634 • Subaru ATF, ATF-HP • Suzuki 3314 & 3317 • Texaco ETL-7045E, ETL-8072B, N402 • Toyota Type T-III and T-IV • Voith 55.6335.XX (G607), 55.6336.XX (G1363) • Volvo 97340, 97341 • Volkswagen G 052 162, G 052 990, G 055 025 • ZF TE-ML 03D, 04D, 05L, 09, 11B, 14A, 14B, 16L, 17C • JASO 1-A

Note: Not for use with CVT or Ford Type F applications. AMSOIL warrants the use of this product for Chrysler ATF+4® applications above -39°C. Product does not meet the cold temperature requirement of ATF+4 at -40°C. For warranty information, visit www.amsoil.com/warranty.aspx.

STOCK #	UNITS	PKG./SIZE	WT. LBS.	COST
OTFOT	EA	(1) 946-ml Bottle	2.0	11.30
OTFQT	CA	(12) 946-ml Bottles	24.0	134.40
OTF1G	EA	(1) 3.78-litre Bottle	7.9	44.40
OTF1G	CA	(4) 3.78-litre Bottles	31.6	176.00
OTFTP	EA	(1) 9.45-litre Bottle	19.3	107.50
OTFTP	CA	(2) 9.45-litre Bottles	38.6	213.00

OE Fuel-Efficient Synthetic Automatic Transmission Fluid

Ford MERCON® LV • GM DEXRON® VI • Aisin-Warner AW-1 • Audi G 055 005, G 055 162, G 060 162 • BMW 83 22 0 142 516, 83 22 2 152 426 • Honda DW-1® • Hyundai/Kia SP-IV, SPH-IV, SPH-IV-RR • JWS 3324 • Chrysler Mopar® PIN 68157995A (ZF 8 & 9 speed ATF) • Mitsubishi SP-IV, ATF J2 • Nissan Matic-S • Saab 93 165 147 • Shell M-1375.4, M-1375.5, M-1375.6, M-L 12108 • Toyota WS • Volkswagen G 055 005, G 055 162, G 060 162 • JASO 1-A • Mercedes Benz 236.12, 236.14 • Volvo 97342

Note: Not for use with CVT applications.

STOCK #	UNITS	PKG./SIZE	WT. LBS.	COST
OTLQT	EA	(1) 946-ml Bottle	2.0	10.85
OTLQT	CA	(12) 946-ml Bottles	24.0	129.00
OTL1G	EA	(1) 3.78-litre Bottle	7.9	42.60
OTL1G	CA	(4) 3.78-litre Bottles	31.6	168.80
OTLTP	EA	(1) 9.45-litre Bottle	19.5	103.10
OTLTP	CA	(2) 9.45-litre Bottles	39.0	204.20



*All trademarked names are the property of their respective owners and may be registered marks in some countries. No affiliation or endorsement claim, express or implied, is made by their use.

CVT



Synthetic CVT Fluid

Provides outstanding protection and performance for continuously variable transmissions (CVT) throughout vehicle manufacturer-recommended drain intervals. Exceptional metal-to-metal frictional properties help prevent belt and chain slipping. Resists wear and oxidation that threaten transmission performance and life. Superior wet-clutch performance for outstanding anti-shudder durability and reduced noise and vibration.

Recommended for belt- and chain-type CVTs requiring the following: Audi/VW TL 52180, G 052 180, G 052 516 • BMW 8322 0 136 376, 8322 0 429 154, EZL 799A • Daihatsu Amix CVTF-DC, CVTF-DFE • Dodge/Jeep NS-2, CVTF+4®, MOPAR® CVT 4 • Ford CVT23, CFT30, WSS-M2C933-A, Motorcraft® XT-7-QCFT, MERCON® C • GM/Saturn DEX-CVT, CVTF I-Green2 • Honda HMMF, HCF-2 • Hyundai/Kia SP-CVT 1 • Mazda CVTF 3320 • Mercedes Benz CVT28, 236.20 • Mini Cooper EZL 799A, ZF CVT V1 • Mitsubishi DiaQueen CVTF-J1, CVTF-J4 • Nissan NS-1, NS-2, NS-3 • Punch EZL 799A • Shell Green 1V • Subaru e-CVTF, i-CVTF, Lineartronic® CVTF, K0425Y0710, CV-30 • Suzuki CVTF 3320, TC, NS-2, CVTF Green1, CVTF Green 2 • Toyota/Lexus TC, FE

STOCK#	UNITS	PKG./SIZE	WT. LBS.	COST
CVTQT	EA	(1) 946-ml Bottle	2.0	16.90
CVTQT	CA	(12) 946-ml Bottles	24.0	201.60
CVTTP	EA	(1) 9.45-litre Bottle	19.5	160.70
CVTTP	CA	(2) 9.45-litre Bottles	39.0	319.40

MTG



Synthetic Manual Transmission and Transaxle Gear Lube

Provides improved internal component protection. Formulated with extreme-pressure additives and advanced frictional qualities that provide smooth shifts while protecting gears, bearings and seals. Non-corrosive to yellow metals.

API GL-4 • ZF TE-ML 02B, 17A, MB 235.5 & MAN 341-Z2 (formerly MAN 341 ML) • Synchronized manual transmissions and transaxles that require 75W-85, 75W-90 or 80W-90 API GL-4 Gear Lube • NV 4500 Transmissions • GM Part #12346190 • Chrysler Part #4874459 • Chrysler Spec MS-9070 • Certain Hyundai, Hino, Infiniti, Kia, Lexus, Mazda, Mitsubishi, Nissan, Suzuki, Toyota & Volkswagen models requiring GL-4

STOCK#	UNITS	PKG./SIZE	WT. LBS.	COST
MTGQT	EA	(1) 946-ml Bottle	2.0	19.60
MTGQT	CA	(12) 946-ml Bottles	24.0	234.00
MTG05	EA	(1) 18.9-litre Pail	38.9	375.40
MTG55	EA	208-litre Drum	434.0	3,573.00

MTF



Synthetic Synchromesh Transmission Fluid

Specifically designed for manual transmissions and transaxles with synchromesh systems that require light viscosity, non-extreme-pressure fortified oil. Advanced additive technology provides smooth shifting without grinding or bump shifting while providing excellent gear and bearing protection. Outstanding anti-wear and anti-foam properties and non-corrosive to yellow metals. Not for use in engines or wet clutches.

New Venture NV T350, NV1500, NV2500, NV3500, NV3550 & NV5600 • Tremec T4, T5, T18, T56, T176, TK0500, TK0600, TR3550 (GM Vehicles) & TR3450 • Honda Genuine MTF • GM Part #12345349, #12345577, #12377916 & #1052931 • Chrysler Part #4874464 & #4874465 • GM Specs #9985648, #9986105 & #9985535 • Chrysler Specs MS-9224 & MS-9417 • MTF-94 & Texaco MTX Fluids

STOCK#	UNITS	PKG./SIZE	WT. LBS.	COST
MTFQT	EA	(1) 946-ml Bottle	2.1	16.85
MTFQT	CA	(12) 946-ml Bottles	25.2	201.00
MTF05	EA	(1) 18.9-litre Pail	39.2	320.80
MTF55	EA	208-litre Drum	436.0	3,017.00

ART



Super Shift® Racing Transmission Fluid

Specially formulated for high-horsepower, high-torque conditions. Designed to provide quick, solid shifts and prevent automatic transmissions from slipping, helping racers improve on elapsed times. Delivers exceptional friction reduction and reduced wear so clutch plates and transmissions last longer. Provides maximum torque transfer and brake power while resisting oxidation and thermal breakdown.

Allison C-4 • Ford Type F

STOCK#	UNITS	PKG./SIZE	WT. LBS.	COST
ARTQT	EA	(1) 946-ml Bottle	2.0	15.35
ARTQT	CA	(12) 946-ml Bottles	24.0	183.00

Torque-Drive® Synthetic Heavy-Duty Automatic Transmission Fluid

Engineered to eliminate the deficiencies common to conventional petroleum ATFs, AMSOIL Torque-Drive provides superior performance and protection against thermal and oxidative degradation, sludge and varnish formation and viscosity shear down. Ideal for heavy equipment transmissions.

AMSOIL recommends Torque-Drive for use in all automatic transmissions requiring any of the following specifications: Allison C-4, TES-295, TES-389; Ford MERCON® V; GM DEXRON® III; MAN 339 Type V-1, 339 Type V-2, 339 Type Z-1, 339 Type Z-2, 339 Type Z-3, 339F; MB 236.91, 236.10; Voith 55.6335, 55.6336; Volvo 97340, 97341; ZF TE-ML 03D, TE-ML 04D, TE-ML 14A, TE-ML 14B, TE-ML 14C, TE-ML 17C, TE-ML 20B, TE-ML 20C

STOCK#	UNITS	PKG./SIZE	WT. LBS.	COST
ATD1G	EA	(1) 3.78-litre Bottle	7.8	64.25
ATD1G	CA	(4) 3.78-litre Bottles	31.2	255.40
ATDTP	EA	(1) 9.45-litre Bottle	19.1	156.50
ATDTP	CA	(2) 9.45-litre Bottles	38.2	311.00

Synthetic Tractor/Hydraulic Transmission Oil

Formulated for combinations of transmissions, hydraulic systems, final drives, power take-off systems and wet brakes, including hydrostatic lawn mower transmissions. Exceeds the most demanding all-weather specifications of both Ford New Holland* FNHA-2-C-200 & 2-C-201 and John Deere* J20C & J20D, as well as most other tractor hydraulics/transmissions, eliminating the need for seasonal oil changes.

SAE 5W-30

STOCK#	UNITS	PKG./SIZE	WT. LBS.	COST
ATHQT	EA	(1) 946-ml Bottle	2.1	13.05
ATHQT	CA	(12) 946-ml Bottles	25.2	155.40
ATH05	EA	(1) 18.9-litre Pail	39.0	246.40
ATH30	EA	113-litre Drum	242.1	1,298.00
ATH55	EA	208-litre Drum	434.2	2,260.00

*All trademarked names are the property of their respective owners and may be registered marks in some countries. No affiliation or endorsement claim, express or implied, is made by their use.

ATD



ATH



SVG



SVT



SVO



G2039



G1230

G1242

Severe Gear® Synthetic EP Gear Lube

Specifically engineered for high-demand applications, including trailer towing, heavy hauling, 4x4 off-road driving, commercial use and racing. Superior lube film strength combined with extra additives protects gears and bearings from scoring and wear. Resists high heat and possesses excellent cold-flow properties. Outperforms all conventional gear oils. Recommended for all types of vehicles such as turbo-diesel pickups, SUVs, autos, trucks, heavy equipment and motor homes. Compatible with most limited-slip differentials.

Severe Gear 75W-90 Synthetic Gear Lube

Top fuel efficiency and cold-temperature performance

API GL-5/MT-1 • MIL-PRF-2105E • MACK GO-J • Dana SHAES 234
(Eaton PS-037)

STOCK#	UNITS	PKG./SIZE	WT. LBS.	COST
SVGQTC	EA	(1) 946-ml Bottle	2.0	19.80
SVGQTC	CA	(12) 946-ml Bottles	24.0	236.40
SVG05	EA	(1) 18.9-litre Pail	38.8	379.00

Severe Gear 75W-110 Synthetic Gear Lube

Extra viscosity protection without sacrificing fuel efficiency

API GL-5/MT-1 • MIL-PRF-2105E • Mack GO-J • Dana SHAES 234
(Eaton PS-037)

STOCK#	UNITS	PKG./SIZE	WT. LBS.	COST
SVTQTC	EA	(1) 946-ml Bottle	2.1	20.50
SVTQTC	CA	(12) 946-ml Bottles	25.2	244.80
SVT05	EA	(1) 18.9-litre Pail	40.0	393.00

Severe Gear 75W-140 Synthetic Gear Lube

Maximum viscosity protection for severe-duty applications

API GL-5/MT-1 • MIL-PRF-2105E • MACK GO-J • Dana SHAES 234
(Eaton PS-037)

STOCK#	UNITS	PKG./SIZE	WT. LBS.	COST
SVOQTC	EA	(1) 946-ml Bottle	2.1	22.35
SVOQTC	CA	(12) 946-ml Bottles	25.2	267.00
SVO05	EA	(1) 18.9-litre Pail	39.2	429.20

Easy Installation

PRODUCT	STOCK#	COST
Hand Pump	G2039	14.55
Flexible Pour Spout	G1230	1.00
Nozzle Dispenser Caps (6)	G1242	1.60

PRODUCTS THE PROS USE

"AMSOIL Severe Gear has significantly reduced heat in our race trucks' differentials."

— Chad Hord

Four World Championships





Severe Gear® EP Synthetic Racing Gear Lube

High-viscosity, extreme-pressure gear lube engineered for the demands of severe racing conditions, including off-road truck racing, rock racing, rock crawling, tractor pulling, funny car racing and dragster racing. Protects gears from shock-loading and tire shake. Resists sling-off from G-forces and high speeds. Effectively clings to gears, promoting cooler operating temperatures and extending gear and bearing life.

Severe Gear SAE 190 Synthetic Gear Lube

API GL-5/MT-1

STOCK#	UNITS	PKG./SIZE	WT. LBS.	COST
SRNQT	EA	(1) 946-ml Bottle	2.1	21.10
SRNQT	CA	(12) 946-ml Bottles	25.2	252.00
SRN05	EA	(1) 18.9-litre Pail	40.0	405.00

Severe Gear SAE 250 Synthetic Gear Lube

API GL-5/MT-1

STOCK#	UNITS	PKG./SIZE	WT. LBS.	COST
SRTQT	EA	(1) 946-ml Bottle	2.1	21.10
SRTQT	CA	(12) 946-ml Bottles	25.2	252.00
SRT05	EA	(1) 18.9-litre Pail	40.0	405.00



Long Life Synthetic Gear Lube

Specifically engineered for extended drain intervals up to 805,000 kilometers as set by equipment manufacturers for over-the-road trucks. Protects against wear and improves equipment life. Excellent all-season summer and winter performance. Outperforms all conventional gear oils. Also excellent for passenger cars and trucks. Compatible with most limited-slip differentials.

75W-90 Long Life Synthetic Gear Lube

API GL-5/MT-1 • MIL-PRF-2105E • MACK GO-J+ • Dana SHAES 256 (Eaton PS-163)

STOCK#	UNITS	PKG./SIZE	WT. LBS.	COST
FGRQTC	EA	(1) 946-ml Bottle	2.1	16.80
FGRQTC	CA	(12) 946-ml Bottles	25.2	200.40
FGR1G	EA	(1) 3.78-litre Bottle	8.1	66.25
FGR1G	CA	(4) 3.78-litre Bottles	32.4	263.40
FGR05	EA	(1) 18.9-litre Pail	39.7	319.80

80W-140 Long Life Synthetic Gear Lube

API GL-5/MT-1 • MIL-PRF-2105E • MACK GO-J+ • Dana SHAES 256 (Eaton PS-163)

STOCK#	UNITS	PKG./SIZE	WT. LBS.	COST
FG005	EA	(1) 18.9-litre Pail	40.0	320.00
FG016	EA	60.5-litre Keg	135.0	972.00
FG030	EA	113-litre Drum	249.0	1,713.00
FG055	EA	208-litre Drum	446.0	3,000.00



AGL



80W-90 Synthetic Gear Lube

High-quality replacement for applications specifying SAE 80W-90 conventional gear lube. Synthetic construction provides improved cold-flow properties, high viscosity index, superior heat resistance and excellent wear protection.

API GL-5/MT-1 • MIL-PRF-2105E • MACK GO-J • Dana SHAES 234
(Eaton PS-037)

STOCK#	UNITS	PKG./SIZE	WT. LBS.	COST
AGLQT	EA	(1) 946-ml Bottle	2.1	13.85
AGLQT	CA	(12) 946-ml Bottles	25.2	165.00
AGL1G	EA	(1) 3.78-litre Bottle	8.1	54.35
AGL1G	CA	(4) 3.78-litre Bottles	32.4	215.80
AGL05	EA	(1) 18.9-litre Pail	39.8	261.40

AGM



Universal Synthetic Marine Gear Lube

Provides true marine gear performance, resists foaming and retains extreme-pressure qualities even when subjected to 10 percent water contamination. For use in outboard lower units, sterndrives, V-drives, bow and tunnel thrusters and marine transmissions requiring an SAE 75W-90 or 80W-90 meeting either GL-4 or GL-5 performance standards.

GL-5, GL-4

STOCK#	UNITS	PKG./SIZE	WT. LBS.	COST
AGMTB	EA	(1) 296-ml Tube	1.2	9.40
AGMTB	CA	(6) 296-ml Tubes	7.2	55.80
AGMQT	EA	(1) 946-ml Bottle	2.1	14.95
AGMQT	CA	(12) 946-ml Bottles	25.2	178.20
AGM05	EA	(1) 18.9-litre Pail	39.4	283.00

Slip Lock® Differential Additive

Formulated to eliminate gear-housing chatter in cars, trucks and SUVs equipped with limited-slip differentials. Formulated for use with both synthetic and petroleum gear lubricants and safely replaces manufacturer-recommended friction modifiers. One tube treats differential capacities of two to four quarts.

Note: AMSOIL synthetic gear lubes do not require the use of this additive. However, not all differentials respond the same and if chatter is noticed, the addition of AMSOIL Slip Lock will eliminate it.

ADA



STOCK#	UNITS	PKG./SIZE	WT. LBS.	COST
ADATBC	EA	(1) 118-ml Tube	0.3	10.70
ADATBC	CA	(12) 118-ml Tubes	3.6	127.20

OUTSTANDING
PROTECTION
FOR LOWER UNITS

Ea® Oil Filters

AMSOIL Ea Oil Filters rank among the highest efficiency filters available to the auto/light-truck market, providing a filtering efficiency of 98.7 percent at 20 microns. Featuring advanced full-synthetic technology, Ea Oil Filters provide greater efficiency, capacity and durability than cellulose filters, extending engine and filter life and reducing engine wear. When used in conjunction with AMSOIL synthetic motor oil, AMSOIL Ea Oil Filters are guaranteed for extended service life:



- Ea Filters designated with product code Ea15K are recommended for 24,000 kilometers/one year, whichever comes first, in normal or severe service.
- Ea Filters designated with product code EaO are recommended for 40,000 kilometers/one year, whichever comes first, in normal service or 24,000 kilometers/one year, whichever comes first, in severe service.

STOCK#	UNITS	WT. LBS.	COST	STOCK#	UNITS	WT. LBS.	COST
Ea15K01	EA	0.2	28.05	Ea15K32	EA	0.8	18.25
Ea15K02	EA	0.3	19.70	EaO34	EA	0.8	22.95
Ea15K03	EA	0.2	11.20	EaO38	EA	0.7	25.00
Ea15K04	EA	0.1	21.00	EaO40	EA	1.0	24.30
Ea15K09	EA	0.6	19.10	EaO41	EA	1.0	24.30
EaO11	EA	0.9	22.95	EaO42	EA	1.0	24.05
Ea15K12	EA	0.6	19.90	EaO43	EA	1.0	24.30
Ea15K13	EA	0.6	21.15	Ea15K50	EA	0.7	22.75
EaO14	EA	0.6	23.30	Ea15K51	EA	0.7	19.90
EaO15	EA	1.0	24.90	EaO52	EA	1.0	25.05
EaO17	EA	0.8	18.45	EaO58	EA	0.7	22.95
Ea15K20	EA	0.7	18.65	EaO59	EA	0.8	24.30
EaO21	EA	0.9	24.30	EaO64	EA	0.6	22.10
EaO23	EA	0.8	22.10	EaO80	EA	2.0	32.95
EaO24	EA	0.6	25.15	Ea15K88	EA	0.5	51.90
EaO26	EA	1.3	30.80	EaO98	EA	1.7	29.50
Ea15K29	EA	0.7	21.30	EaO99	EA	2.2	42.70
EaO31	EA	1.0	24.30				

Which filter do I need?

Call 1-800-956-5695 (Monday-Friday, 7 a.m. - 7 p.m. Central Time) or contact the AMSOIL Dealer listed on the back of your catalog (if one is listed) to determine the appropriate filter for each application. When AMSOIL Ea Oil Filters are used with a motor oil other than AMSOIL motor oil the filter should be changed according to the vehicle manufacturer recommendation.

***Ea Oil Filters are available to Dealers and Preferred Customers by the case.
See page 23 for information on becoming a Dealer or Preferred Customer.***

Fill in your vehicle information. Then call 1-800-956-5695 (Monday – Friday, 7 a.m. – 7 p.m. Central Time). You may also contact the AMSOIL Dealer listed on the back of your catalog (if one is listed) to determine your appropriate oil and air filters.

Make _____ Year _____ Model _____

Engine _____

VIN _____

Your AMSOIL Oil Filter is _____ Your WIX Oil Filter is _____

Your WIX Air Filter is _____

More Premium Ea® Filters

AMSOIL offers a variety of specialty Ea oil and air filters constructed with premium synthetic technology. Call 1-715-399-8324 (Monday-Friday, 8 a.m. - 5 p.m. Central Time) for application information.



Ea Heavy-Duty Extended-Life Oil Filters

Provide excellent filtering efficiency and high contaminant capacity for heavy-duty on- and off-road diesel and gasoline applications. Provide extended service intervals that coincide with the maximum drain intervals of AMSOIL synthetic motor oils.



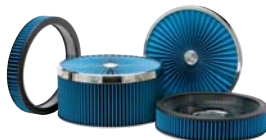
Ea Bypass Filters

High-efficiency bypass filters effectively remove minute dirt particles and soot. Provide an efficiency rating of 98.7 percent at two microns.



Ea Universal Air Induction Filters

Fit most popular aftermarket air intake systems on the market, providing improved cold air intake and excellent efficiency for superior engine protection and performance. Cleanable and remain serviceable for long filter life.



Ea Racing Air Filters

Specially designed for carbureted racing and street rod applications, providing higher dirt-holding capacity, lower pressure drop and greater airflow and efficiency. Cleanable and remain serviceable for long filter life.



Ea Pre-Filters

Constructed of woven mesh and designed to fit over the top of Ea Racing and Air Induction Filters, preventing large particles from sticking to them and blocking airflow. Easily removed and shaken free of debris in seconds. Cleanable and remain serviceable for up to one year.



Ea Motorcycle Oil Filters

Designed for motorcycles, ATVs and four-stroke personal watercraft, snowmobiles and outboard motors, stopping smaller dirt particles, offering less restriction, extending equipment and filter life and improving performance. Fluted for easy removal. Available in black or chrome.

GRG



DOMINATOR® Synthetic Racing Grease

Ultimate protection for high-speed, high-temperature, extreme-pressure applications. Maximizes power, bearing efficiency and fuel efficiency, while delivering superior wear protection and friction reduction for wheel bearings and chassis components in racing vehicles operated on snow, dirt, water or pavement.

NLGI No. 2, GC/LB

STOCK#	UNITS	PKG./SIZE	WT. LBS.	COST
GRGCR	EA	(1) 397-g. Cartridge	1.0	16.95
GRGCR	CA	(10) 397-g. Cartridges	10.0	163.00

Synthetic Polymeric Off-Road Grease

Formulated to resist impact/pound-out and provide outstanding protection and performance in the extreme environments faced in heavy-duty off-road equipment. Provides exceptional adhesion and cohesion properties, resists water washout and stays in place longer, providing outstanding lubrication over extended service intervals, reducing maintenance costs and extending equipment life.

GPOR1

GPOR2



Synthetic Polymeric Off-Road Grease

NLGI No. 1

STOCK#	UNITS	PKG./SIZE	WT. LBS.	COST
GPOR1CR	EA	(1) 425-g. Cartridge	1.0	12.40
GPOR1CR	CA	(10) 425-g. Cartridges	10.0	118.00

Synthetic Polymeric Off-Road Grease

NLGI No. 2

STOCK#	UNITS	PKG./SIZE	WT. LBS.	COST
GPOR2CR	EA	(1) 425-g. Cartridge	1.0	12.85
GPOR2CR	CA	(10) 425-g. Cartridges	10.0	123.00

Synthetic Polymeric Truck, Chassis and Equipment Grease

Delivers excellent wear protection and performance in the severe-service, extreme-pressure environments faced in medium- and heavy-duty over-the-road trucks and equipment. Clings tenaciously to metal surfaces, staying in place to seal out water and contaminants and provide a protective barrier between metal components. Extended service life reduces the need for frequent re-application (or requires less grease at each servicing), reducing maintenance costs and increasing equipment life.

GPTR1

GPTR2



Synthetic Polymeric Truck, Chassis and Equipment Grease

NLGI No. 1

STOCK#	UNITS	PKG./SIZE	WT. LBS.	COST
GPTR1CR	EA	(1) 397-g. Cartridge	1.0	10.60
GPTR1CR	CA	(10) 397-g. Cartridges	10.0	100.50

Synthetic Polymeric Truck, Chassis and Equipment Grease

NLGI No. 2

STOCK#	UNITS	PKG./SIZE	WT. LBS.	COST
GPTR2CR	EA	(1) 397-g. Cartridge	1.0	10.85
GPTR2CR	CA	(10) 397-g. Cartridges	10.0	104.00

GLC



Synthetic Multi-Purpose Grease

Reduces friction and wear in high-speed/high-temperature components such as automotive wheel bearings and electric motors. Keeps components running clean and trouble-free for outstanding performance and long life.

NLGI No. 2, GC/LB

STOCK#	UNITS	PKG./SIZE	WT. LBS.	COST
GLCCR	EA	(1) 397-g. Cartridge	1.0	10.05
GLCCR	CA	(10) 397-g. Cartridges	10.0	95.00
GLC3P	EA	(3) 85-g. Cartridges	0.6	13.45
GLC3P	CA	(30) 85-g. Cartridges	5.6	126.50
GLCKT	EA	Grease Gun Kit	1.6	37.95

GLC3P



GLCKT

GWR



GWR3P



Synthetic Water-Resistant Grease

Resists water washout and corrosion. Maximum protection for boat trailer wheel bearings, outboard motors, ATVs, UTVs and other components frequently exposed to water.

NLGI No. 2, GC/LB

STOCK#	UNITS	PKG./SIZE	WT. LBS.	COST
GWRRCR	EA	(1) 397-g. Cartridge	1.0	10.80
GWRRCR	CA	(10) 397-g. Cartridges	10.0	102.00
GWR3P	EA	(3) 85-g. Cartridges	0.6	14.65
GWR3P	CA	(30) 85-g. Cartridges	5.6	138.00

GEC



Arctic Synthetic Grease

Provides extreme low-temperature pumpability and superior protection for equipment operating in harsh climates where temperatures drop well below freezing, ensuring superior load and wear protection where conventional greases are ineffective.

NLGI No. 1

STOCK#	UNITS	PKG./SIZE	WT. LBS.	COST
GECCR	EA	(1) 425-g. Cartridge	1.0	14.70
GECCR	CA	(10) 425-g. Cartridges	10.0	138.00

GXC



X-Treme Synthetic Food Grade Grease

An ultra-premium lubricant designed for high levels of protection in food and pharmaceutical industry equipment. NSF-approved (formerly USDA H-1) for incidental contact with food. Excellent high-temperature and extreme-pressure protection.

NLGI No. 2

STOCK#	UNITS	PKG./SIZE	WT. LBS.	COST
GXCCR	EA	(1) 397-g. Cartridge	1.0	13.15
GXCCR	CA	(10) 397-g. Cartridges	10.0	125.50

FWG



Synthetic Fifth-Wheel Grease

Delivers long service life and outstanding protection against wear and corrosion in the heavily-loaded, harsh operating environments specific to fifth-wheel hitches used in trucking and trailer applications.

NLGI No. 2

STOCK#	UNITS	PKG./SIZE	WT. LBS.	COST
FWGTB	EA	(1) 296-ml. Tube	0.7	10.65
FWGTB	CA	(12) 296-ml. Tubes	8.4	126.60

ABC



Semi-Synthetic Bar and Chain Oil

Clings to metal surfaces better than other oils.
Delivers outstanding lubrication and protection.

STOCK#	UNITS	PKG./SIZE	WT. LBS.	COST
ABCQT	EA	(1) 946-ml Bottle	2.1	7.45
ABCQT	CA	(12) 946-ml Bottles	25.2	88.20
ABC1G	EA	(1) 3.78-litre Bottle	8.1	28.80
ABC1G	CA	(4) 3.78-litre Bottles	32.4	113.60
ABC05	EA	(1) 18.9-litre Pail	39.2	135.40

PCI



Synthetic Compressor Oil

Provides outstanding protection and performance in rotary screw, rotary vane, reciprocating and other compressor applications. Compatible with PAO-, ester- and petroleum-based compressor oils. Not compatible with glycol- or silicone-based compressor oils.

Synthetic Compressor Oil

ISO 46, SAE 20

STOCK#	UNITS	PKG./SIZE	WT. LBS.	COST
PCIQT	EA	(1) 946-ml Bottle	2.0	14.85
PCIQT	CA	(12) 946-ml Bottles	24.0	177.00
PCI05	EA	(1) 18.9-litre Pail	38.4	281.20

Synthetic Compressor Oil

ISO 100, SAE 30/40

STOCK#	UNITS	PKG./SIZE	WT. LBS.	COST
PCKQT	EA	(1) 946-ml Bottle	2.1	15.65
PCKQT	CA	(12) 946-ml Bottles	25.2	186.60
PCK05	EA	(1) 18.9-litre Pail	38.8	297.00

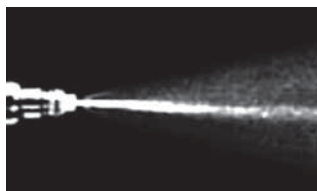


Industry's Most Advanced Formulation Improves Fuel Economy

P.i.®

P.i. ranks among the most potent gasoline additives available today. As a concentrated detergent, it is outstanding in cleaning combustion chamber deposits, intake valve deposits and fuel injector deposits, eliminating the need for expensive fuel injector cleaning procedures. It is ideal for use prior to emissions inspections, and it helps maintain peak engine efficiency, fuel economy, power and drivability in newer low-mileage engines. In engines with accumulated deposits, P.i. provides improved fuel mileage up to 5.7%, reduced emissions, restored power and performance, reduced need for higher octane fuel, reduced carbon rap and preignition, better drivability and smoother operation after only one tank of gasoline. Excellent for both gasoline direct injected (GDI) and port fuel injected engines. Treat one full tank of gas every 6,400 kilometers (100 hours of service for marine, stationary and off-road gas-powered engines). One bottle treats one full tank of gas up to 76 litres.

STOCK#	UNITS	PKG./SIZE	WT. LBS.	COST
CPICN	EA	(1) 354-ml Bottle	0.9	15.45
CPICN	CA	(12) 354-ml Bottles	10.8	184.20

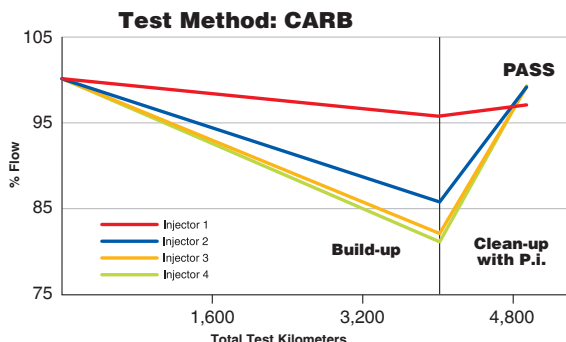


Injector spray pattern **before**
P.i. treatment.



Injector spray pattern **after**
P.i. treatment.

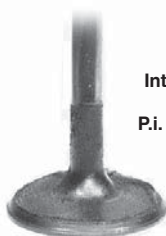
Two of the four dirty injectors tested were fouled >15% and another was fouled >10%. After one tank of operation on AMSOIL P.i., all injectors returned to >95% flow.



Intake valve
before
P.i. treatment.



Intake valve
after
P.i. treatment.





Addresses Ethanol-Related
Performance issues

Quickshot®

Formulated to thoroughly clean varnish, gums and insoluble debris in two- and four-stroke gasoline-powered small engines and powersports equipment fuel systems, restoring peak performance. Effectively addresses performance issues related to ethanol, water and dirty pump gas. Stabilizes fuel between uses and during short-term storage periods. See package for treat rates.

Motorcycles • Snowmobiles • Boats • ATVs • Edgers • Tillers • Mowers • Snowblowers • Chainsaws • Generators • Farm & Construction Equipment • and more

STOCK#	UNITS	PKG./SIZE	WT. LBS.	COST
AQSCNC	EA	(1) 236-ml Bottle	0.6	12.00
AQSCNC	CA	(6) 236-ml Bottles	3.6	71.40
AQSQT	EA	(1) 946-ml Bottle	2.0	37.00
AQSQT	CA	(12) 946-ml Bottles	24.0	442.80



Phase separation is when ethanol/water mixtures fall to the bottom of fuel tanks and containers, leading to lean-burn conditions.

Quickshot helps keep water molecules dispersed to prevent phase separation.

Degraded fuel can present a major maintenance issue in motorcycle engines, forming varnish, gum and insoluble debris that clog carburetors, fuel injectors and fuel filters. Carbon buildup can form on the tops of pistons resulting in pre-ignition, rough idling and poor throttle response. Fuel-related problems are only expected to intensify in the coming years as the ethanol content in pump gasoline continues to increase.

AMSOIL Quickshot® (AQS) is a premium fuel additive formulated to thoroughly clean and restore peak performance in motorcycle and powersports equipment fuel systems. It also stabilizes fuel between uses and during short-term storage periods.

AST



Gasoline Stabilizer

Formulated to keep fuel from deteriorating during storage. Reduces the oxidation process to help prevent varnish and gum buildup in gasoline, which can clog injectors, stick floats and cause poor engine performance. Treat rate is 30 ml with every 9.5 litres of fuel. One bottle treats 150 litres.

STOCK#	UNITS	PKG./SIZE	WT. LBS.	COST
ASTCNC	EA	(1) 473-ml Bottle	1.1	14.80
ASTCNC	CA	(6) 473-ml Bottles	6.6	88.20

COB



DOMINATOR® Octane Boost

Improves the performance of all two- and four-stroke gasoline-fueled engines. Increases octane up to four numbers. Maximizes power, reduces engine knock and improves ignition and engine response. Helps fuel burn cleaner and removes carbon deposits. Excellent as a lead substitute at same treat rates in collector automobiles, older off-road equipment, 4x4 off-road vehicles and gasoline racing vehicles. One bottle treats 57 litres.

STOCK#	UNITS	PKG./SIZE	WT. LBS.	COST
COBBE	EA	(1) 354-ml Bottle	0.8	12.75
COBBE	CA	(6) 354-ml Bottles	4.8	75.85

MOB



Motorcycle Octane Boost

Increases octane up to three numbers for maximum power and efficiency in motorcycles. Designed to improve startup performance and eliminate engine ping or knock for increased power at low-rpm operation. Treat rate is 38.4 ml per 3.78 litres of fuel. One bottle treats 15 to 23 litres.

STOCK#	UNITS	PKG./SIZE	WT. LBS.	COST
MOBCNC	EA	(1) 118-ml Bottle	0.4	6.40
MOBCNC	CA	(12) 118-ml Bottles	4.8	75.25

UP TO 4.5%
FUEL ECONOMY IMPROVEMENT



Diesel Injector Clean

Total system cleaner and lubricity improver for all types of heavy- and light-duty diesel engines, including high-pressure common-rail (HPCR) designs. Outstanding new formula cleans all deposits, including carbon deposits on the nozzle and internal diesel injector deposits (IDID) on the pintle. Formulated with ultra-low-sulfur diesel fuel (ULSD) in mind, it effectively cleans fuel injectors and combustion chamber for improved efficiency and better sealing. Minimizes soot-loading. Improves the oxidation and thermal stability of diesel fuel, improves fuel economy by up to 4.5 percent, restores horsepower and protects against water contamination. Compatible with all types of exhaust emission systems, including diesel particulate filters (DPF). Also recommended in heating-oil furnace applications. 30 ml treat 19 litres of fuel. One 473 ml bottle treats 303 litres.

STOCK#	UNITS	PKG./SIZE	WT. LBS.	COST
ADFCNC	EA	(1) 473-ml Bottle	1.2	10.45
ADFCNC	CA	(12) 473-ml Bottles	14.4	124.20
ADF05	EA	(1) 18.9-litre Pail	40.2	288.20



Diesel Injector Clean + Cold Flow

Outstanding formula cleans all deposits, including carbon deposits on the nozzle and internal diesel injector deposits (IDID) on the pintle. Combines the superior detergency and lubricity of AMSOIL Diesel Injector Clean with the excellent anti-gelling properties of AMSOIL Diesel Cold Flow in one convenient package without sacrificing performance. 60 ml treat 19 litres of fuel. One bottle treats 151 litres.

STOCK#	UNITS	PKG./SIZE	WT. LBS.	COST
DFCCNC	EA	(1) 473-ml Bottle	1.2	12.90
DFCCNC	CA	(12) 473-ml Bottles	14.4	153.60
DFC05	EA	(1) 18.9-litre Pail	40.0	375.40

DRC



**Keep a bottle
on hand for
emergencies**

Diesel Recovery

Quickly and effectively dissolves the wax crystals that form when diesel fuel surpasses its cloud point. Quickly liquefies gelled diesel fuel, thaws frozen fuel filters and reduces the need for a new filter, saving money and allowing the operator to continue driving with minimal downtime. Performs well in all diesel fuels, including ULSD, off-road and biodiesel. Alcohol-free and non-corrosive. 30 ml treat four litres of fuel. One bottle treats 114 litres.

STOCK#	UNITS	PKG./SIZE	WT. LBS.	COST
DRCCNC	EA	(1) 887-ml Bottle	2.0	17.95
DRCCNC	CA	(12) 887-ml Bottles	24.0	213.65

CCB



Diesel Cetane Boost

Raises the cetane number of diesel fuel up to seven points for maximum horsepower, increased fuel economy and easier starts in all diesel engines. 30 ml treat up to 38 litres of fuel. One bottle treats up to 606 litres.

18.9-litre pails are filled to 98 percent of packaging capacity to allow for product expansion in warm temperatures.

STOCK#	UNITS	PKG./SIZE	WT. LBS.	COST
CCBCN	EA	(1) 473-ml Bottle	1.3	11.55
CCBCN	CA	(12) 473-ml Bottles	15.6	137.40
ACB05	EA	(1) 18.9-litre Pail	43.3	321.00

FLSH



Engine and Transmission Flush

Helps restore operating efficiency, increase fuel economy and reduce emissions in gasoline and diesel engines and automatic transmissions. Its potent, detergent-based formula dissolves and disperses sludge, varnish and deposits, promoting lower operating temperatures and reduced oil consumption. More environmentally friendly than solvent-based products, providing safer cleaning action and easy disposal with waste oil.

STOCK#	UNITS	PKG./SIZE	WT. LBS.	COST
FLSHCN	EA	(1) 473-ml Bottle	1.2	12.60
FLSHCN	CA	(12) 473-ml Bottles	14.4	150.00
FLSH05	EA	(1) 18.9-litre Pail	40.0	375.40



Metal Protector

Disperses water and protects metal surfaces from rust and corrosion. Penetrates existing rust build-up and loosens bolts. Also dries wet electrical systems. A must for any home or shop. Keep a can in your vehicle too.

STOCK#	UNITS	PKG./SIZE	WT. LBS.	COST
CMPSC	EA	(1) 208-g. Spray Can	0.8	8.00
CMPSC	CA	(12) 208-g. Spray Cans	9.6	94.80



Propylene Glycol Antifreeze & Coolant

For use in heavy-duty applications and all passenger cars and light trucks. Combines the benefits of biodegradability, low toxicity and all-climate protection. Offers protection up to 965,000 kilometers, 12,000 hours or six years, whichever comes first, in heavy-duty applications and 241,000 kilometers or five years, whichever comes first, in passenger cars and light trucks. Fully formulated: DOES NOT require the use of supplemental antifreeze/coolant additives (SCAs) or extenders. 100 percent concentrate; must be mixed with water. Compatible with all other major antifreeze/coolant products.

ASTM D4985, D6210 • Case IH • Caterpillar EC-1 • Chrysler MS7170 • Cummins CES14603 • Detroit Diesel 7SE298, 93K217 • Fiat Professional: Fiat Truck • Ford WSS-M97B51-A1 • Freightliner 48-22880 • John Deere 8650-5 • Mack Truck CNH • MTU MTL5048, 5049 • New Holland • PACCAR: Kenworth, Peterbilt • TMC of ATA RP329, 330, 338 • US Military CID A-A-52624A

STOCK#	UNITS	PKG./SIZE	WT. LBS.	COST
ANT1G	EA	(1) 3.78-litre Bottle	9.8	47.10
ANT1G	CA	(4) 3.78-litre Bottles	39.2	186.80

To test freeze protection and additive concentration, order antifreeze test strips:

STOCK#	UNITS	PKG./SIZE	WT. LBS.	COST
G1164	EA	70 Strips	0.1	16.90
G1165	EA	6 Strips	0.1	6.30



Dominator® Coolant Boost

Provides quick and effective heat transfer inside radiator and cylinder heads, resulting in reduced operating temperatures, more efficient operation, increased horsepower and quicker engine warm-up times. Robust mixture of corrosion inhibitors effectively protect the radiator, heater core, water pump, cylinder heads, engine block and intake manifold from the damaging effects of corrosion. Recommended with both racing applications using straight water coolant and automotive applications using 50/50 coolant/water mixtures.

STOCK#	UNITS	PKG./SIZE	WT. LBS.	COST
RDCBCN	EA	(1) 473-ml Bottle	1.1	14.70
RDCBCN	CA	(6) 473-ml Bottles	6.6	87.60



Multi-Vehicle Synthetic Power Steering Fluid

Effectively reduces friction and delivers excellent wear protection and lubricity, resulting in cooler operating temperatures, longer component life and quieter operation. Low pour point ensures immediate lubrication at startup and in cold temperatures, while high viscosity index resists thermal breakdown and maintains maximum protection in high temperatures.

American Motor Corporation C 4124 • BMW 82 11 0 148 132; 83 29 0 429 576; 81 22 1 468 879 & 82 11 1 468 041 • Chrysler MS-1872; MS-5931, MS-9602 & MS-11655 • Ford M2C138-CJ; ESW-M2C128-C&D; M2C195-A; M2C204-A & M2C33-F • GM/Saginaw PSF 9985010; 9985835 & 89021184 • Hyundai/Kia PSF-3; PSF-4 & PSF 00232-19017 • Mercedes Benz 236.3; 345.0; 001 989 24 03 10; 001 989 24 03 12 & Q 1 32 0001 • Mitsubishi Diamond SP III & PS Fluid • Navistar TMS 6810 • Nissan PSF-II • Porsche 000 043 206 56 • Saab 93160548; (45) 30 09 800 & 30 32 380 • Subaru K0209A0080 • Toyota PSF Type EH; P/N 008886-01 • Volvo 1161529 & 30741424 • VW/Audi TL-52146; G002000; G 004 000 M2; G 004 000 M7 & G 004 000 M8

STOCK#	UNITS	PKG./SIZE	WT. LBS.	COST
PSFCN	EA	(1) 473-ml Bottle	1.1	9.35
PSFCN	CA	(12) 473-ml Bottles	13.2	111.00



Fluid Extraction Pump

STOCK#	WT. LBS.	COST
G2576	2.0	21.95

Aids in the removal of power steering fluid, motor oil, drivetrain lubricants and engine coolant. Can also be used to install fresh lubricants in hard-to-reach areas.

Aftermarket Partners

AMSOIL also offers premium filtration products from its aftermarket partners, including Donaldson, WIX and MANN FILTER.

For product and pricing information, call 1-800-956-5695 (Monday - Friday, 7 a.m. - 7 p.m. Central Time) or contact the AMSOIL Dealer listed on the back of your catalog (if one is listed).



The Company of **FIRSTS**

More than 40 Years of Innovation and Leadership

FIRST API-qualified 100 percent synthetic motor oil.

FIRST to introduce the concept of "extended drain intervals" with a recommended 25,000-mile/12-month drain interval.

FIRST synthetic gear lube for automotive use.

FIRST synthetic motor oil for diesel engines.

FIRST synthetic motor oil for racing engines.

FIRST synthetic motor oil for turbocharged engines.

FIRST synthetic motor oil for marine engines.

FIRST 100:1 pre-mix synthetic 2-cycle oil.

FIRST synthetic automatic transmission fluid for automotive use.





The First in Synthetics®

AMSOIL INC.

One AMSOIL Center
Superior, WI 54880

WE HONOR



(Discover in U.S. only)

Your Servicing AMSOIL Dealer

Refer to this referral number to save time and make ordering easier. Call toll-free at 1-800-956-5695. Credit card orders only. ▼

Referral # _____